

## Product datasheet for **TA804057AM**

### **C14orf166 (RTRAF) Mouse Monoclonal Antibody (Biotin conjugated) [Clone ID: OTI3F4]**

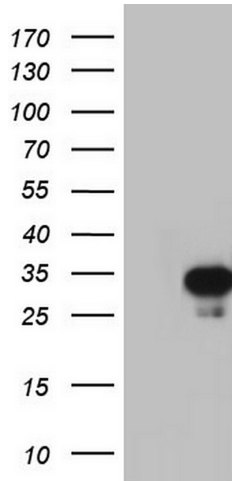
#### **Product data:**

Product Type:	Primary Antibodies
Clone Name:	OTI3F4
Applications:	IHC, WB
Recommended Dilution:	WB 1:2000, IHC 1:150
Reactivity:	Human
Host:	Mouse
Isotype:	IgG1
Clonality:	Monoclonal
Immunogen:	Full length human recombinant protein of human C14orf166 (NP_057123) produced in E.coli.
Formulation:	PBS (pH 7.3) containing 1% BSA, 50% glycerol and 0.02% sodium azide.
Concentration:	0.5 mg/ml
Purification:	Purified from mouse ascites fluids or tissue culture supernatant by affinity chromatography (protein A/G)
Conjugation:	Biotin
Storage:	Store at -20°C as received.
Stability:	Stable for 12 months from date of receipt.
Predicted Protein Size:	27.9 kDa
Gene Name:	chromosome 14 open reading frame 166
Database Link:	<a href="#">NP_057123</a> <a href="#">Entrez Gene 51637 Human</a> <a href="#">Q9Y224</a>
Synonyms:	CGI-99; CGI99; CLE; CLE7; hCLE1; LCRP369; RLLM1

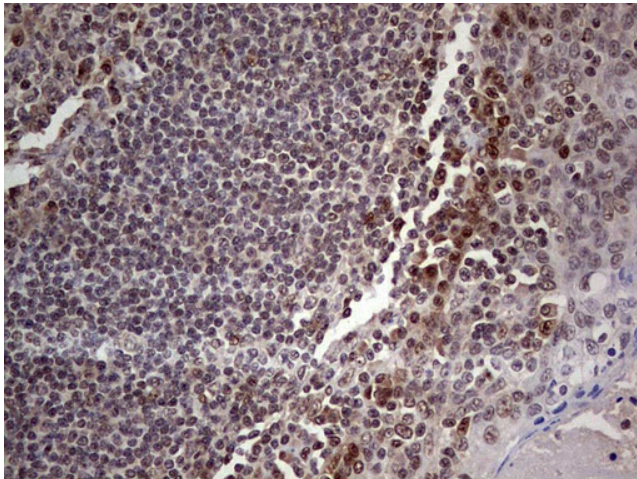


[View online »](#)

**Product images:**



HEK293T cells were transfected with the pCMV6-ENTRY control (Left lane) or pCMV6-ENTRY C14orf166 ([RC200016], Right lane) cDNA for 48 hrs and lysed. Equivalent amounts of cell lysates (5 ug per lane) were separated by SDS-PAGE and immunoblotted with anti-C14orf166. Positive lysates [LY414235] (100ug) and [LC414235] (20ug) can be purchased separately from OriGene.



Immunohistochemical staining of paraffin-embedded Human tonsil within the normal limits using anti-C14orf166 mouse monoclonal antibody. (Heat-induced epitope retrieval by 1mM EDTA in 10mM Tris, pH8.5, 120°C for 3min, [TA804057])