

Product datasheet for **TA804044**

Filensin (BFSP1) Mouse Monoclonal Antibody [Clone ID: OTI1F4]

Product data:

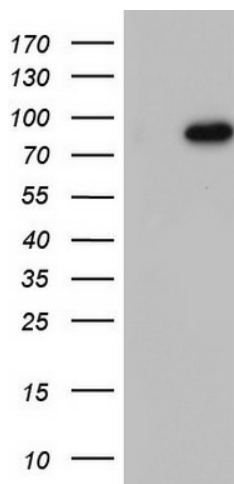
Product Type:	Primary Antibodies
Clone Name:	OTI1F4
Applications:	IHC, WB
Recommended Dilution:	WB 1:2000
Reactivity:	Human
Host:	Mouse
Isotype:	IgG1
Clonality:	Monoclonal
Immunogen:	Human recombinant protein fragment corresponding to amino acids 405-665 of human BFSP1 (NP_001186) produced in E.coli.
Formulation:	PBS (pH 7.3) containing 1% BSA, 50% glycerol and 0.02% sodium azide.
Concentration:	1 mg/ml
Purification:	Purified from mouse ascites fluids or tissue culture supernatant by affinity chromatography (protein A/G)
Conjugation:	Unconjugated
Storage:	Store at -20°C as received.
Stability:	Stable for 12 months from date of receipt.
Predicted Protein Size:	74.4 kDa
Gene Name:	beaded filament structural protein 1
Database Link:	NP_001186 Entrez Gene 631 Human Q12934
Background:	This gene encodes a lens-specific intermediate filament-like protein named filensin. The encoded protein is expressed in lens fiber cells after differentiation has begun. This protein functions as a component of the beaded filament which is a cytoskeletal structure found in lens fiber cells. Mutations in this gene are the cause of autosomal recessive cortical juvenile-onset cataract. Alternate splicing results in multiple transcript variants. [provided by RefSeq, Jul 2013]



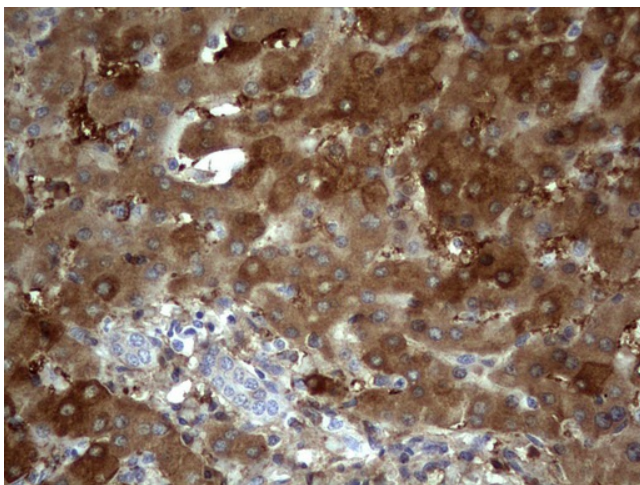
[View online »](#)

Synonyms: CP94; CP115; CTRCT33; LIFL-H

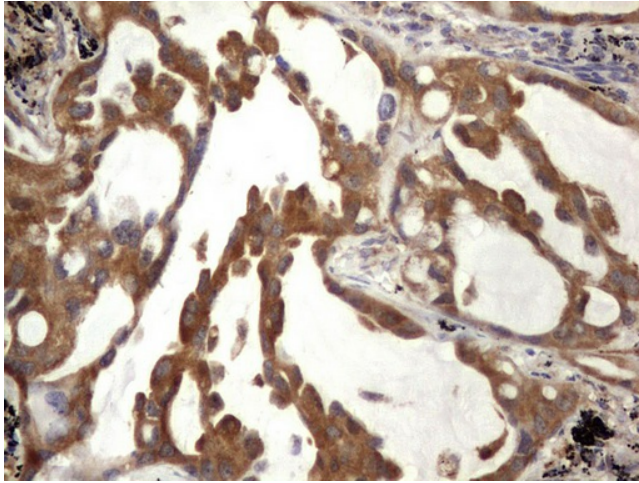
Product images:



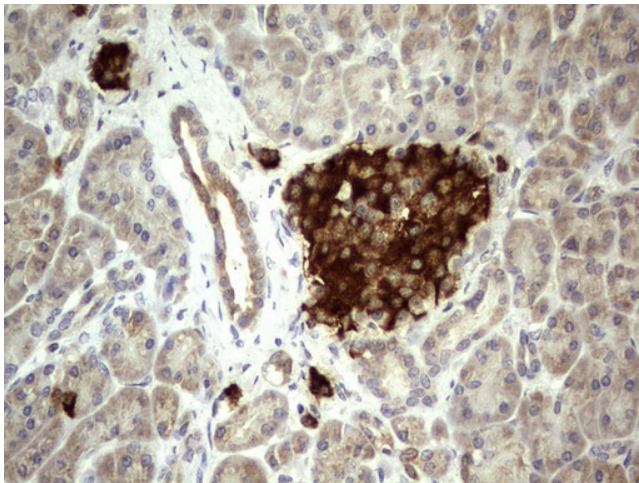
HEK293T cells were transfected with the pCMV6-ENTRY control (Left lane) or pCMV6-ENTRY BFSP1 ([RC213412], Right lane) cDNA for 48 hrs and lysed. Equivalent amounts of cell lysates (5 ug per lane) were separated by SDS-PAGE and immunoblotted with anti-BFSP1. Positive lysates [LY420073] (100ug) and [LC420073] (20ug) can be purchased separately from OriGene.



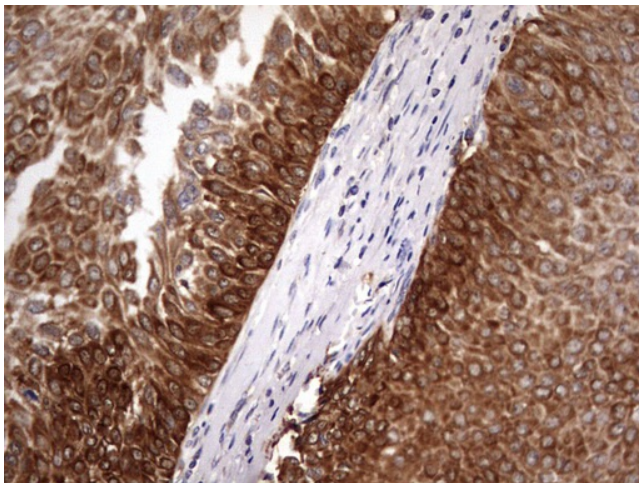
Immunohistochemical staining of paraffin-embedded Human liver tissue within the normal limits using anti-BFSP1 mouse monoclonal antibody. (TA804044) Dilution: 1:150



Immunohistochemical staining of paraffin-embedded Carcinoma of Human lung tissue using anti-BFSP1 mouse monoclonal antibody. (TA804044) Dilution: 1:150



Immunohistochemical staining of paraffin-embedded Human pancreas tissue within the normal limits using anti-BFSP1 mouse monoclonal antibody. (TA804044) Dilution: 1:150



Immunohistochemical staining of paraffin-embedded Carcinoma of Human bladder tissue using anti-BFSP1 mouse monoclonal antibody. (TA804044) Dilution: 1:150