

Product datasheet for **TA804039AM**

Estrogen Receptor 1 (ESR1) Mouse Monoclonal Antibody (Biotin conjugated) [Clone ID: OTI2D3]

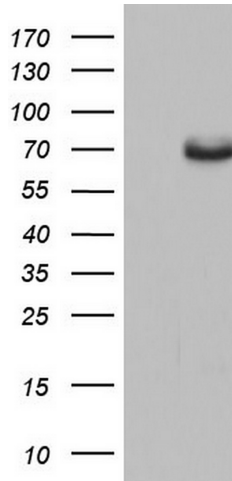
Product data:

Product Type:	Primary Antibodies
Clone Name:	OTI2D3
Applications:	IHC, WB
Recommended Dilution:	WB 1:2000, IHC 1:150
Reactivity:	Human, Mouse, Rat
Host:	Mouse
Isotype:	IgG1
Clonality:	Monoclonal
Immunogen:	Human recombinant protein fragment corresponding to amino acids 1-310 of human ESR1 (NP_000116) produced in E.coli.
Formulation:	PBS (pH 7.3) containing 1% BSA, 50% glycerol and 0.02% sodium azide.
Concentration:	0.5 mg/ml
Purification:	Purified from mouse ascites fluids or tissue culture supernatant by affinity chromatography (protein A/G)
Conjugation:	Biotin
Storage:	Store at -20°C as received.
Stability:	Stable for 12 months from date of receipt.
Predicted Protein Size:	66 kDa
Gene Name:	estrogen receptor 1
Database Link:	NP_000116 Entrez Gene 13982 Mouse Entrez Gene 24890 Rat Entrez Gene 2099 Human P03372
Synonyms:	ER; Era; ESR; ESRA; ESTRR; NR3A1
Protein Families:	Druggable Genome, Nuclear Hormone Receptor, Transcription Factors

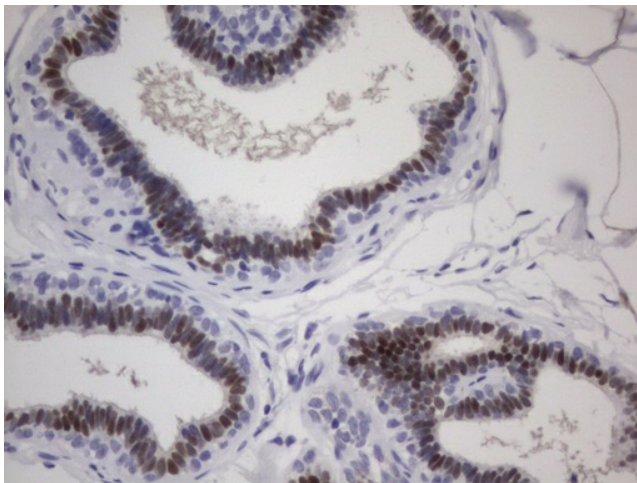


[View online »](#)

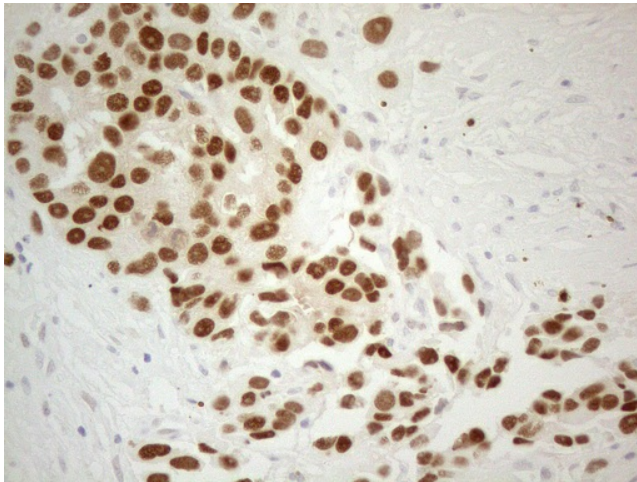
Product images:



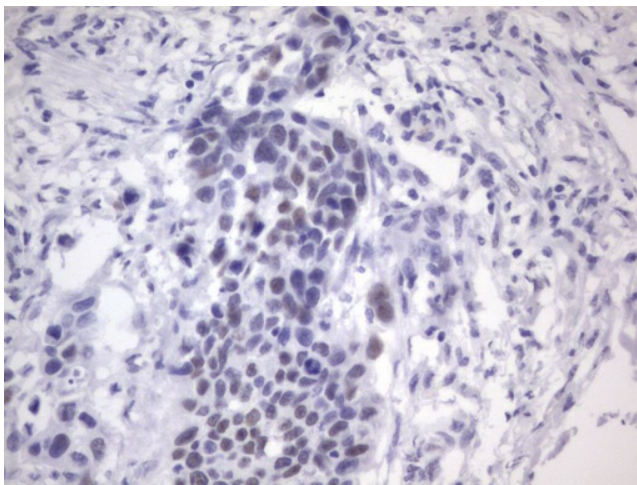
HEK293T cells were transfected with the pCMV6-ENTRY control (Left lane) or pCMV6-ENTRY ESR1 ([RC213277], Right lane) cDNA for 48 hrs and lysed. Equivalent amounts of cell lysates (5 ug per lane) were separated by SDS-PAGE and immunoblotted with anti-ESR1. Positive lysates [LY400046] (100ug) and [LC400046] (20ug) can be purchased separately from OriGene.



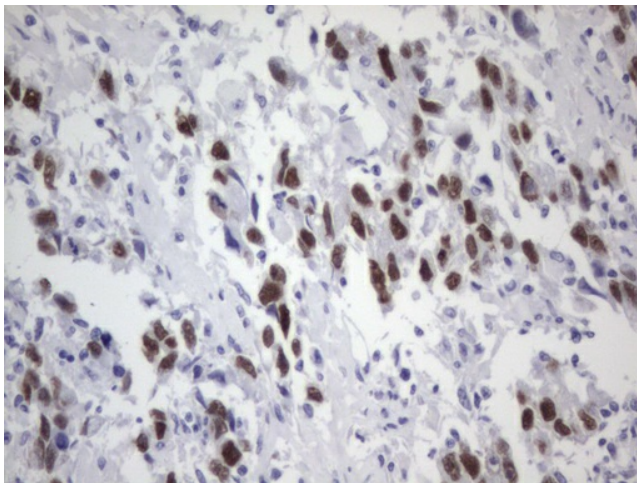
Immunohistochemical staining of paraffin-embedded Human breast tissue using anti-ESR1 mouse monoclonal antibody. ([TA804039]). Heat-induced epitope retrieval by EDTA solution buffer pH 8.0 at 120°C for 3 min.



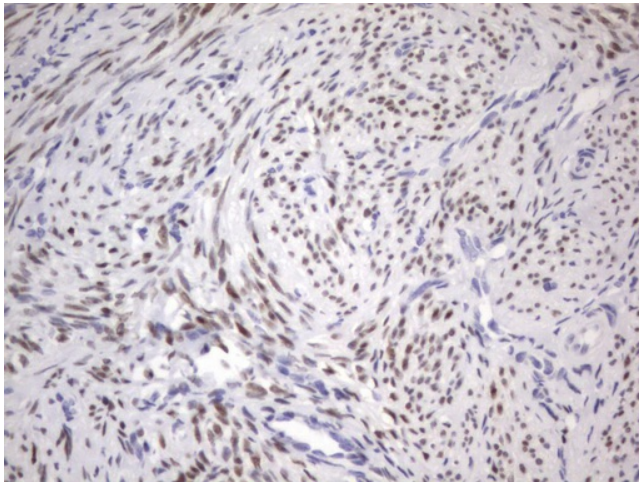
Immunohistochemical staining of paraffin-embedded Adenocarcinoma of Human breast tissue using anti-ESR1 mouse monoclonal antibody. Heat-induced epitope retrieval by EDTA solution buffer pH 8.0 at 120°C for 3 min.



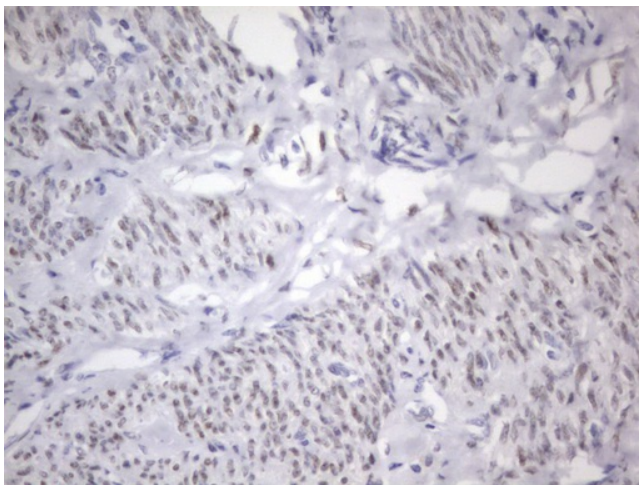
Immunohistochemical staining of paraffin-embedded Carcinoma of Human kidney tissue using anti-ESR1 mouse monoclonal antibody. ([TA804039]). Heat-induced epitope retrieval by EDTA solution buffer pH 8.0 at 120°C for 3 min.



Immunohistochemical staining of paraffin-embedded Adenocarcinoma of Human ovary tissue using anti-ESR1 mouse monoclonal antibody. ([TA804039]). Heat-induced epitope retrieval by EDTA solution buffer pH 8.0 at 120°C for 3 min.



Immunohistochemical staining of paraffin-embedded Human endometrium tissue using anti-ESR1 mouse monoclonal antibody. ([TA804039]). Heat-induced epitope retrieval by EDTA solution buffer pH 8.0 at 120°C for 3 min.



Immunohistochemical staining of paraffin-embedded Adenocarcinoma of Human endometrium tissue using anti-ESR1 mouse monoclonal antibody. ([TA804039]). Heat-induced epitope retrieval by EDTA solution buffer pH 8.0 at 120°C for 3 min.