

## Product datasheet for **TA804021AM**

### CD30 (TNFRSF8) Mouse Monoclonal Antibody (Biotin conjugated) [Clone ID: OTI2G7]

#### Product data:

|                       |   |
|-----------------------|---|
| Product Type:         | Primary Antibodies  |
| Clone Name:           | OTI2G7  |
| Applications:         | FC, IHC   |
| Recommended Dilution: | IHC 1:150, FLOW 1:100   |
| Reactivity:           | Human   |
| Host:                 | Mouse   |
| Isotype:              | IgG1  |
| Clonality:            | Monoclonal  |
| Immunogen:            | Human recombinant protein fragment corresponding to amino acids 19-379 of human TNFRSF8 (NP_001234) produced in E.coli. |
| Formulation:          | PBS (pH 7.3) containing 1% BSA, 50% glycerol and 0.02% sodium azide.  |
| Concentration:        | 0.5 mg/ml   |
| Purification:         | Purified from mouse ascites fluids or tissue culture supernatant by affinity chromatography (protein A/G)               |
| Conjugation:          | Biotin  |
| Storage:              | Store at -20°C as received.   |
| Stability:            | Stable for 12 months from date of receipt.  |
| Gene Name:            | tumor necrosis factor receptor superfamily member 8   |
| Database Link:        | <a href="#">NP_001234</a><br><a href="#">Entrez Gene 943 Human</a><br><a href="#">P28908</a>                            |

**Background:** The protein encoded by this gene is a member of the TNF-receptor superfamily. This receptor is expressed by activated, but not by resting, T and B cells. TRAF2 and TRAF5 can interact with this receptor, and mediate the signal transduction that leads to the activation of NF-kappaB. This receptor is a positive regulator of apoptosis, and also has been shown to limit the proliferative potential of autoreactive CD8 effector T cells and protect the body against autoimmunity. Two alternatively spliced transcript variants of this gene encoding distinct isoforms have been reported. [provided by RefSeq, Jul 2008]



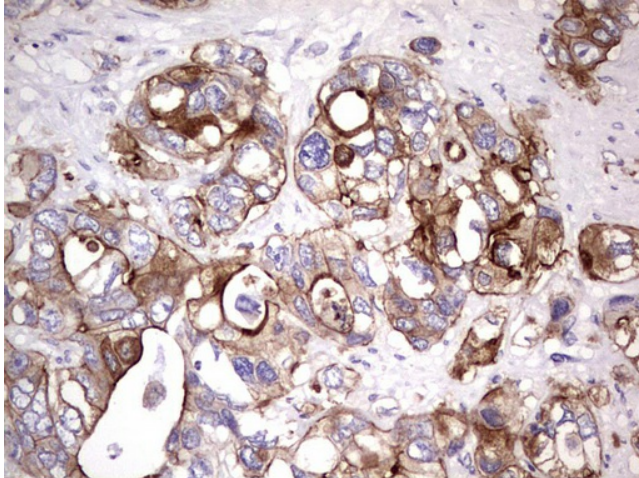
[View online »](#)

**Synonyms:** CD30; D1S166E; Ki-1

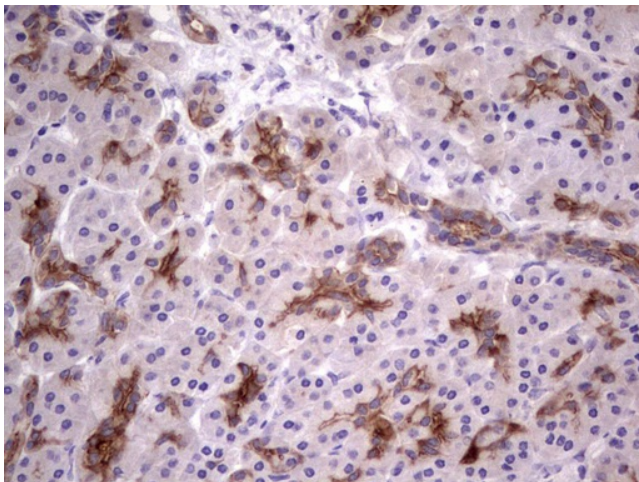
**Protein Families:** Druggable Genome, ES Cell Differentiation/IPS, Stem cell - Pluripotency, Transmembrane

**Protein Pathways:** Cytokine-cytokine receptor interaction

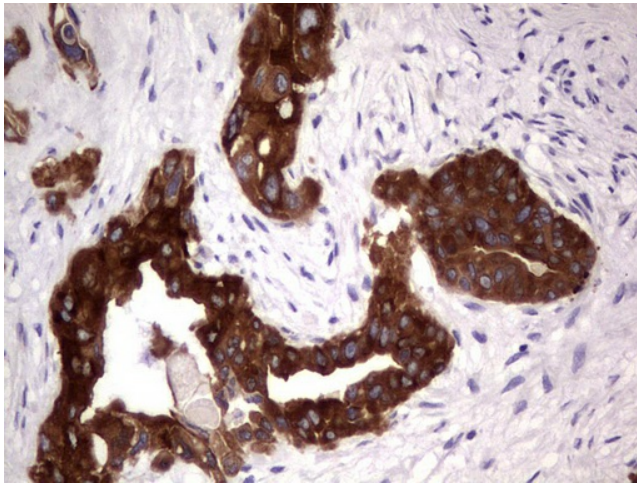
**Product images:**



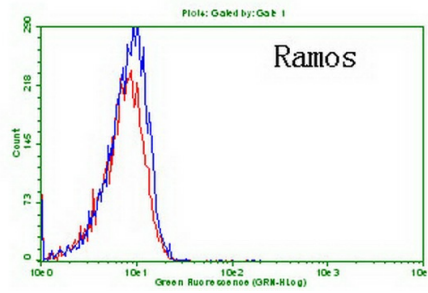
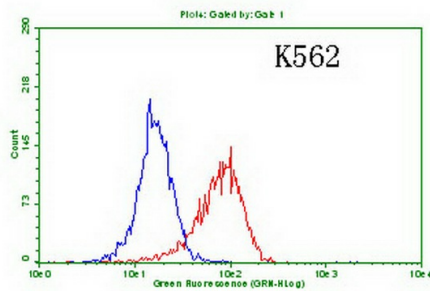
Immunohistochemical staining of paraffin-embedded Adenocarcinoma of Human colon tissue using anti-TNFRSF8 mouse monoclonal antibody. ([TA804021])



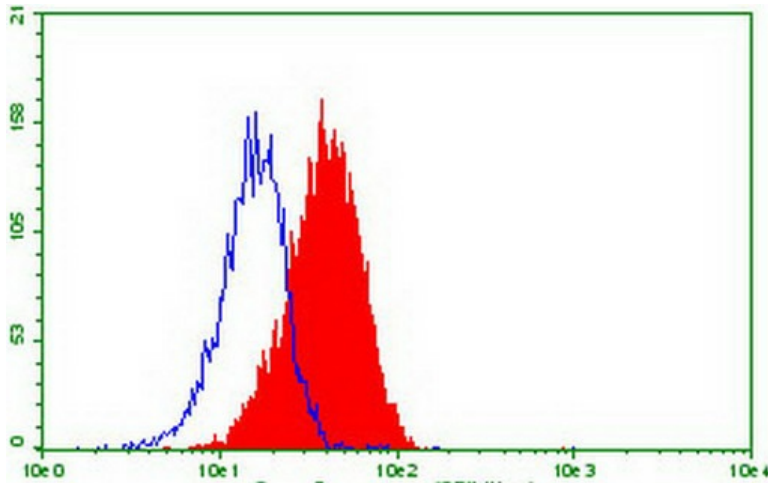
Immunohistochemical staining of paraffin-embedded Human pancreas tissue using anti-TNFRSF8 mouse monoclonal antibody. ([TA804021])



Immunohistochemical staining of paraffin-embedded Carcinoma of Human pancreas tissue using anti-TNFRSF8 mouse monoclonal antibody. ([TA804021])



Flow cytometric Analysis of K562 and Ramos cells, using anti-TNFRSF8 antibody ([TA804021]), (Red), compared to a nonspecific negative control antibody (TA50011), (Blue) (1:100).



Flow cytometric Analysis of k562 cells, using anti-TNFRSF8 antibody ([TA804021]), (Red), compared to a nonspecific negative control antibody (TA50011), (Blue).