

## Product datasheet for **TA804003AM**

### Cytokeratin 19 (KRT19) Mouse Monoclonal Antibody (Biotin conjugated) [Clone ID: OTI7H1]

#### Product data:

|                         |  |
|-------------------------|--|
| Product Type:           | Primary Antibodies   |
| Clone Name:             | OTI7H1   |
| Applications:           | IHC, WB  |
| Recommended Dilution:   | WB 1:200 - 1:1000  |
| Reactivity:             | Human  |
| Host:                   | Mouse  |
| Isotype:                | IgG2b  |
| Clonality:              | Monoclonal   |
| Immunogen:              | Human recombinant protein fragment corresponding to amino acids 240-390 of human KRT19 (NP_002267) produced in E.coli. |
| Formulation:            | PBS (pH 7.3) containing 1% BSA, 50% glycerol and 0.02% sodium azide.   |
| Concentration:          | 0.5 mg/ml  |
| Purification:           | Purified from mouse ascites fluids or tissue culture supernatant by affinity chromatography (protein A/G)              |
| Conjugation:            | Biotin   |
| Storage:                | Store at -20°C as received.  |
| Stability:              | Stable for 12 months from date of receipt.   |
| Predicted Protein Size: | 43.9 kDa   |
| Gene Name:              | keratin 19   |
| Database Link:          | <a href="#">NP_002267</a><br><a href="#">Entrez Gene 3880 Human</a><br><a href="#">P08727</a>                          |



[View online »](#)

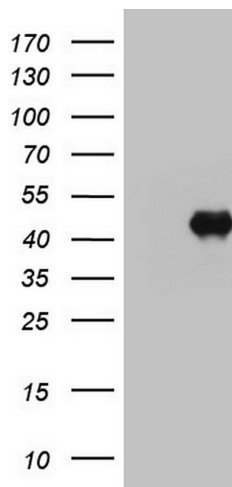
**Background:**

The protein encoded by this gene is a member of the keratin family. The keratins are intermediate filament proteins responsible for the structural integrity of epithelial cells and are subdivided into cytokeratins and hair keratins. The type I cytokeratins consist of acidic proteins which are arranged in pairs of heterotypic keratin chains. Unlike its related family members, this smallest known acidic cytokeratin is not paired with a basic cytokeratin in epithelial cells. It is specifically expressed in the periderm, the transiently superficial layer that envelopes the developing epidermis. The type I cytokeratins are clustered in a region of chromosome 17q12-q21. [provided by RefSeq, Jul 2008]

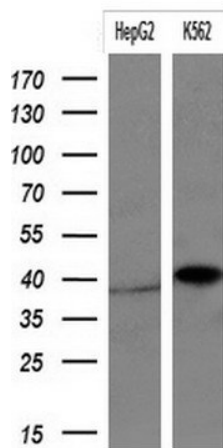
**Synonyms:**

CK19; K1CS; K19

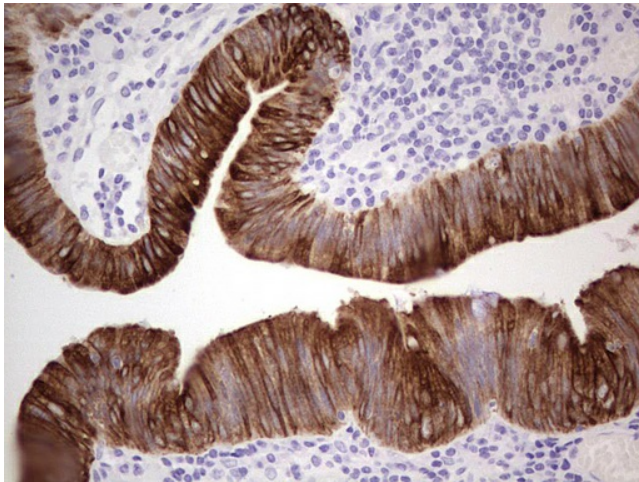
**Product images:**



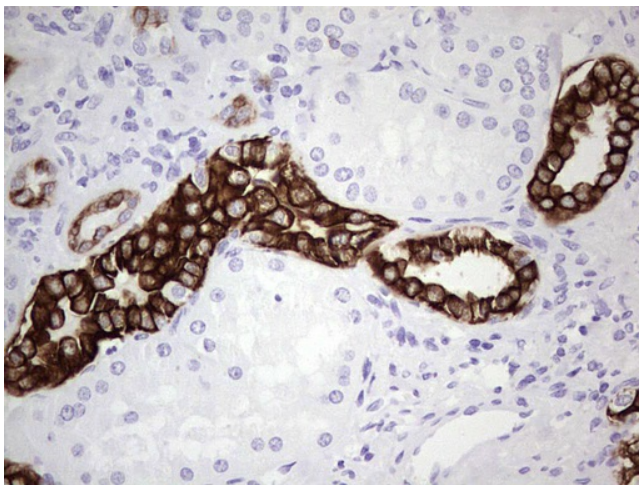
HEK293T cells were transfected with the pCMV6-ENTRY control (Left lane) or pCMV6-ENTRY KRT19 ([RC209707], Right lane) cDNA for 48 hrs and lysed. Equivalent amounts of cell lysates (5 ug per lane) were separated by SDS-PAGE and immunoblotted with anti-KRT19. Positive lysates [LY419428] (100ug) and [LC419428] (20ug) can be purchased separately from OriGene.



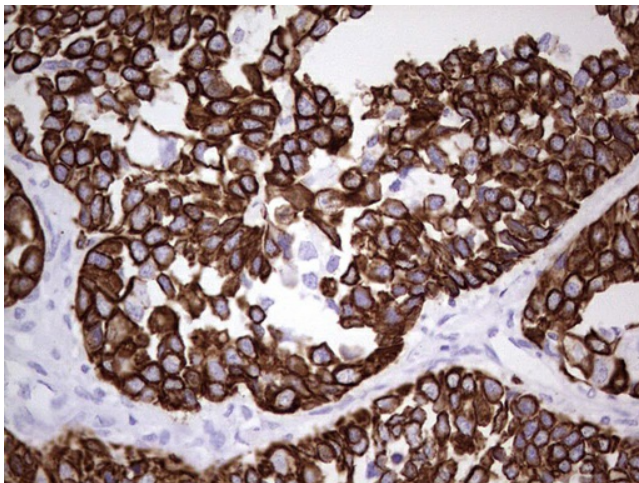
Western blot analysis of extracts (10ug) from 2 cell lines by using anti-KRT19 monoclonal antibody at 1:200.



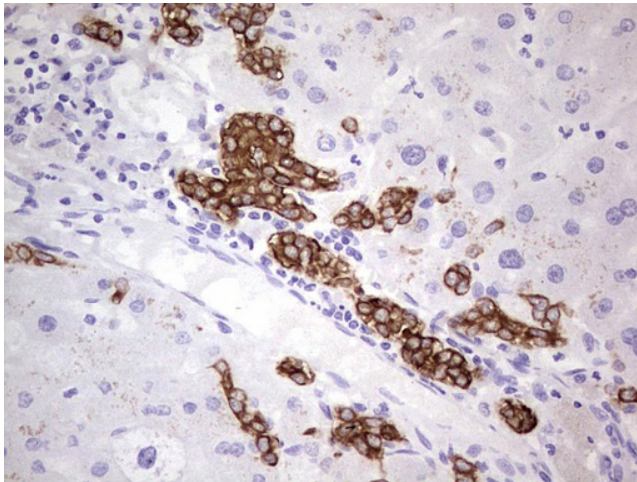
Immunohistochemical staining of paraffin-embedded Adenocarcinoma of Human colon tissue using anti-KRT19 mouse monoclonal antibody. ([TA804003]) Dilution: 1:150



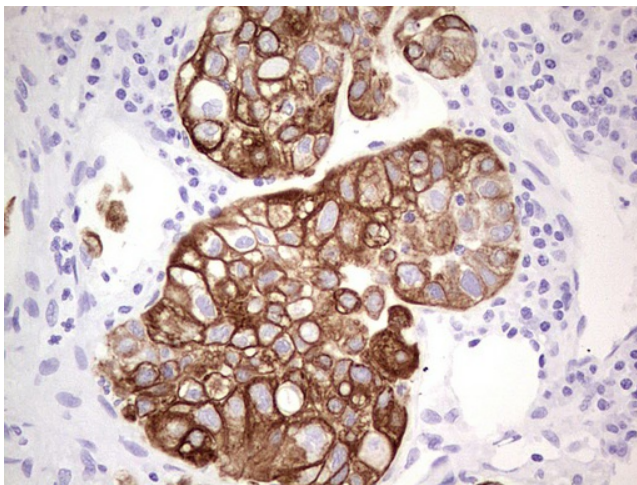
Immunohistochemical staining of paraffin-embedded Human Kidney tissue within the normal limits using anti-KRT19 mouse monoclonal antibody. ([TA804003]) Dilution: 1:150



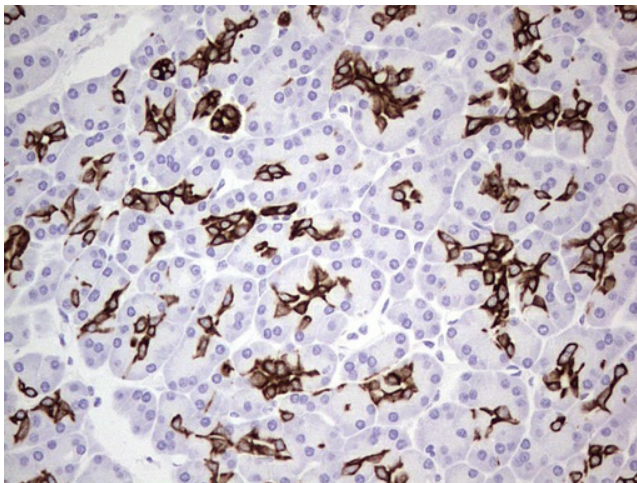
Immunohistochemical staining of paraffin-embedded Carcinoma of Human kidney tissue using anti-KRT19 mouse monoclonal antibody. ([TA804003]) Dilution: 1:150



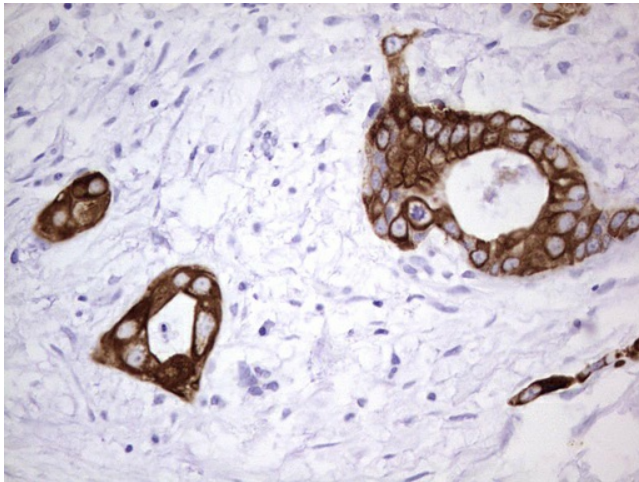
Immunohistochemical staining of paraffin-embedded Human liver tissue within the normal limits using anti-KRT19 mouse monoclonal antibody. ([TA804003]) Dilution: 1:150



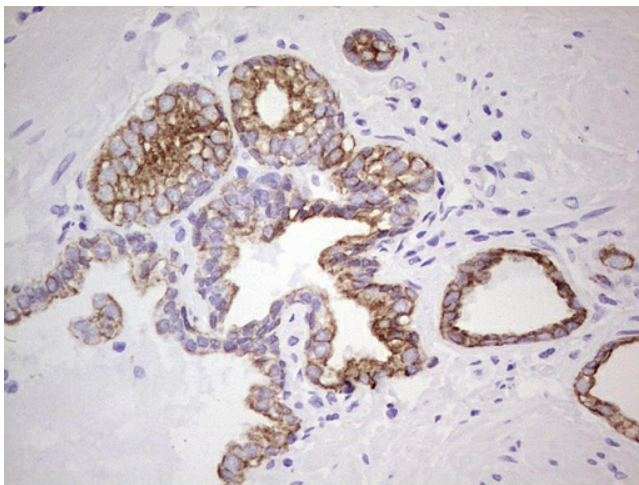
Immunohistochemical staining of paraffin-embedded Carcinoma of Human lung tissue using anti-KRT19 mouse monoclonal antibody. ([TA804003]) Dilution: 1:150



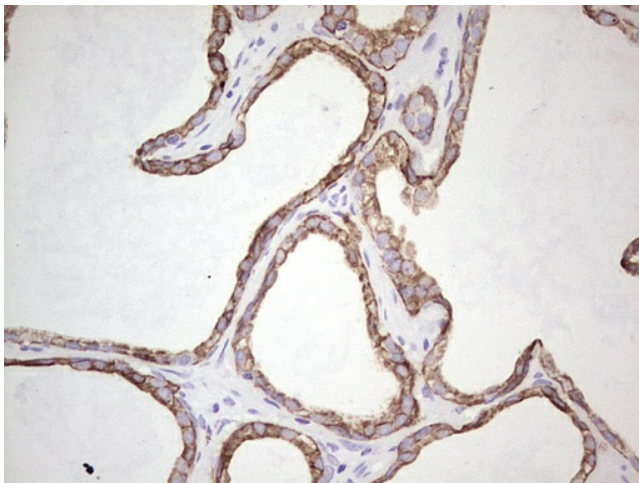
Immunohistochemical staining of paraffin-embedded Human pancreas tissue within the normal limits using anti-KRT19 mouse monoclonal antibody. ([TA804003]) Dilution: 1:150



Immunohistochemical staining of paraffin-embedded Carcinoma of Human pancreas tissue using anti-KRT19 mouse monoclonal antibody. ([TA804003]) Dilution: 1:150



Immunohistochemical staining of paraffin-embedded Human prostate tissue within the normal limits using anti-KRT19 mouse monoclonal antibody. ([TA804003]) Dilution: 1:150



Immunohistochemical staining of paraffin-embedded Carcinoma of Human prostate tissue using anti-KRT19 mouse monoclonal antibody. ([TA804003]) Dilution: 1:150