

Product datasheet for **TA804000AM**

Cytokeratin 19 (KRT19) Mouse Monoclonal Antibody (Biotin conjugated) [Clone ID: OT18A11]

Product data:

Product Type:	Primary Antibodies
Clone Name:	OT18A11
Applications:	IHC, WB
Recommended Dilution:	WB 1:200 - 1:1000
Reactivity:	Human
Host:	Mouse
Isotype:	IgG3
Clonality:	Monoclonal
Immunogen:	Human recombinant protein fragment corresponding to amino acids 240-390 of human KRT19 (NP_002267) produced in E.coli.
Formulation:	PBS (pH 7.3) containing 1% BSA, 50% glycerol and 0.02% sodium azide.
Concentration:	0.5 mg/ml
Purification:	Purified from mouse ascites fluids or tissue culture supernatant by affinity chromatography (protein A/G)
Conjugation:	Biotin
Storage:	Store at -20°C as received.
Stability:	Stable for 12 months from date of receipt.
Predicted Protein Size:	43.9 kDa
Gene Name:	keratin 19
Database Link:	NP_002267 Entrez Gene 3880 Human P08727



[View online »](#)

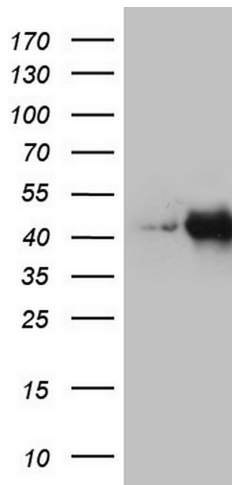
Background:

The protein encoded by this gene is a member of the keratin family. The keratins are intermediate filament proteins responsible for the structural integrity of epithelial cells and are subdivided into cytokeratins and hair keratins. The type I cytokeratins consist of acidic proteins which are arranged in pairs of heterotypic keratin chains. Unlike its related family members, this smallest known acidic cytokeratin is not paired with a basic cytokeratin in epithelial cells. It is specifically expressed in the periderm, the transiently superficial layer that envelopes the developing epidermis. The type I cytokeratins are clustered in a region of chromosome 17q12-q21. [provided by RefSeq, Jul 2008]

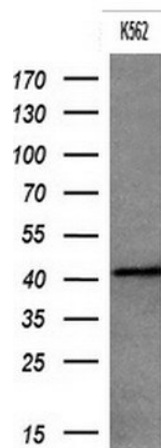
Synonyms:

CK19; K1CS; K19

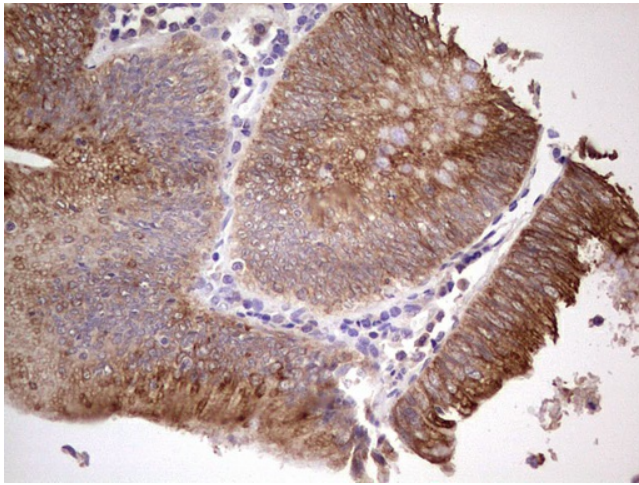
Product images:



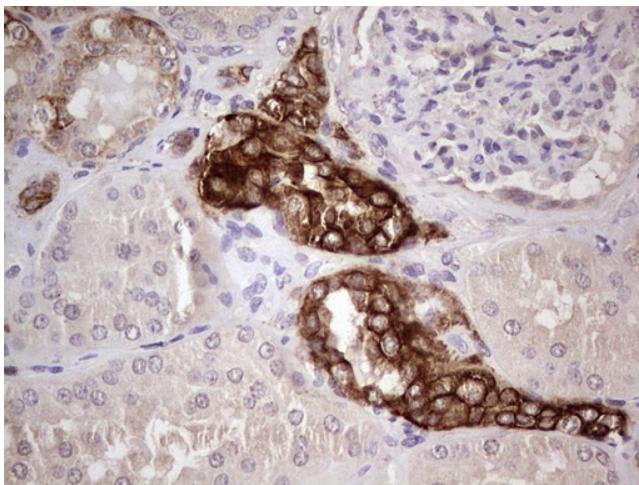
HEK293T cells were transfected with the pCMV6-ENTRY control (Left lane) or pCMV6-ENTRY KRT19 ([RC209707], Right lane) cDNA for 48 hrs and lysed. Equivalent amounts of cell lysates (5 ug per lane) were separated by SDS-PAGE and immunoblotted with anti-KRT19. Positive lysates [LY419428] (100ug) and [LC419428] (20ug) can be purchased separately from OriGene.



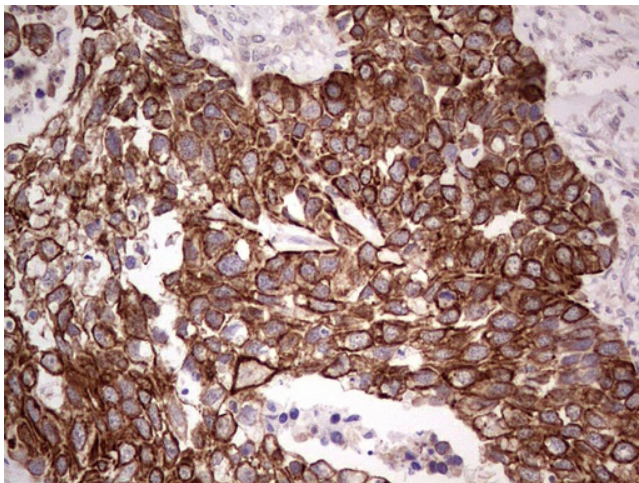
Western blot analysis of extracts (10ug) from 2 cell lines by using anti-KRT19 monoclonal antibody at 1:200.



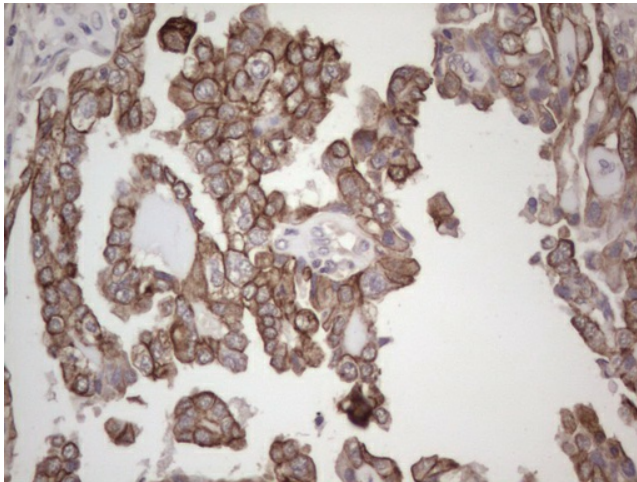
Immunohistochemical staining of paraffin-embedded Adenocarcinoma of Human colon tissue using anti-KRT19 mouse monoclonal antibody. ([TA804000]) Dilution: 1:150



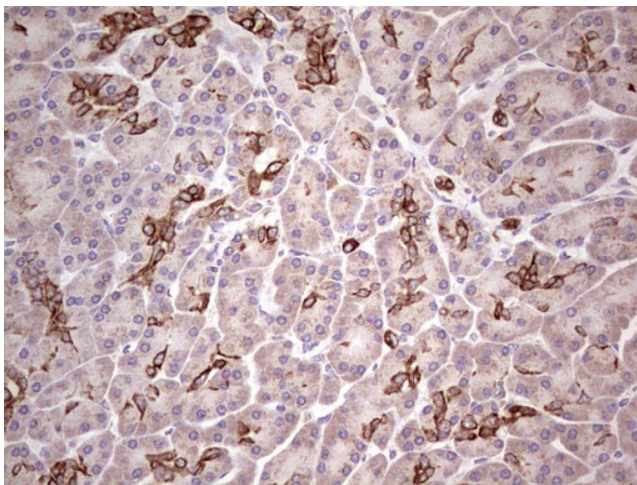
Immunohistochemical staining of paraffin-embedded Human Kidney tissue within the normal limits using anti-KRT19 mouse monoclonal antibody. ([TA804000]) Dilution: 1:150



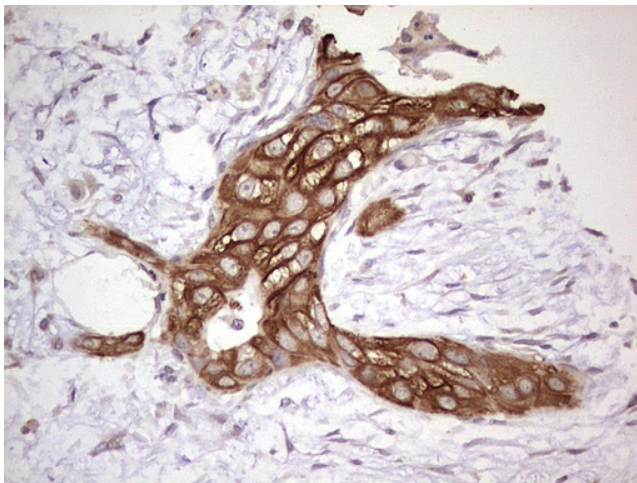
Immunohistochemical staining of paraffin-embedded Carcinoma of Human kidney tissue using anti-KRT19 mouse monoclonal antibody. ([TA804000]) Dilution: 1:150



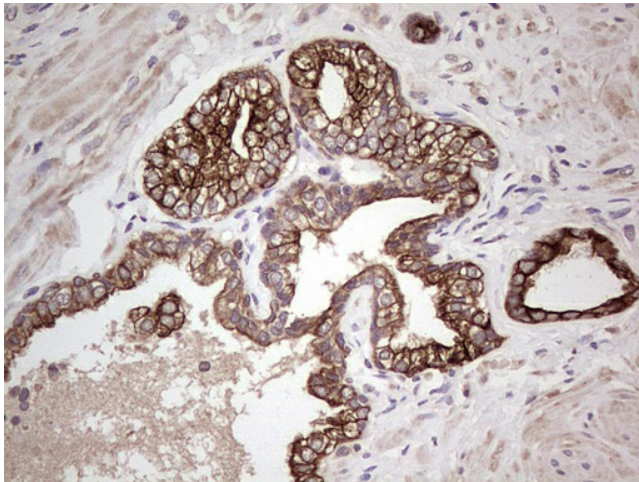
Immunohistochemical staining of paraffin-embedded Adenocarcinoma of Human ovary tissue using anti-KRT19 mouse monoclonal antibody. ([TA804000]) Dilution: 1:150



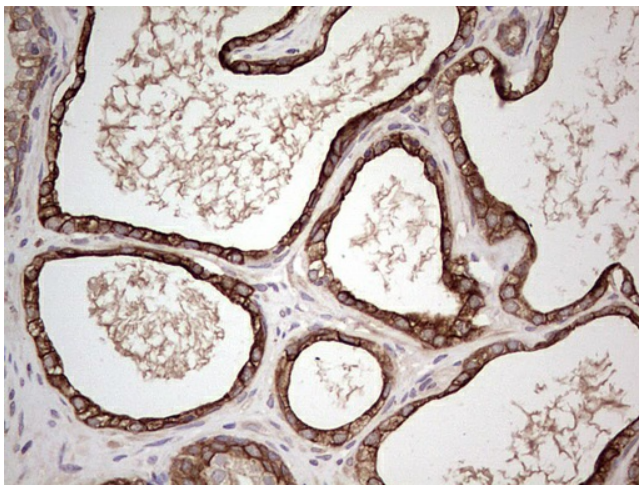
Immunohistochemical staining of paraffin-embedded Human pancreas tissue within the normal limits using anti-KRT19 mouse monoclonal antibody. ([TA804000]) Dilution: 1:150



Immunohistochemical staining of paraffin-embedded Carcinoma of Human pancreas tissue using anti-KRT19 mouse monoclonal antibody. ([TA804000]) Dilution: 1:150



Immunohistochemical staining of paraffin-embedded Human prostate tissue within the normal limits using anti-KRT19 mouse monoclonal antibody. ([TA804000]) Dilution: 1:150



Immunohistochemical staining of paraffin-embedded Carcinoma of Human prostate tissue using anti-KRT19 mouse monoclonal antibody. ([TA804000]) Dilution: 1:150