

Product datasheet for **TA803982AM**

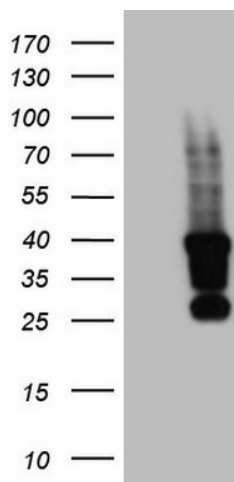
TET3 Mouse Monoclonal Antibody (Biotin conjugated) [Clone ID: OTI4B7]

Product data:

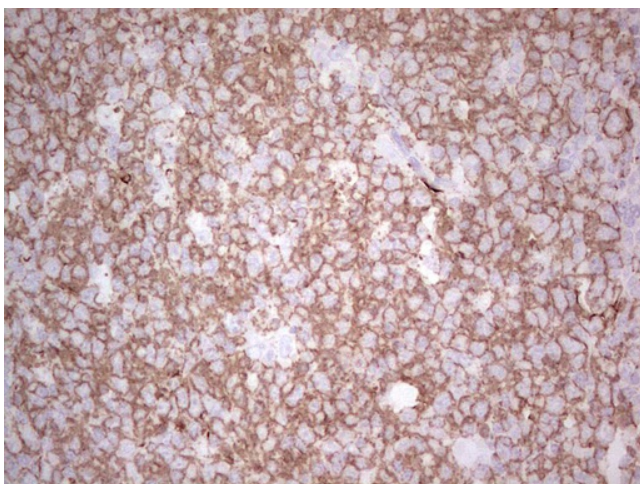
Product Type:	Primary Antibodies
Clone Name:	OTI4B7
Applications:	IHC, WB
Recommended Dilution:	WB 1:2000, IHC 1:150
Reactivity:	Human, Mouse, Rat
Host:	Mouse
Isotype:	IgG1
Clonality:	Monoclonal
Immunogen:	Human recombinant protein fragment corresponding to amino acids 241-568 of human TET3 (NP_659430) produced in E.coli.
Formulation:	PBS (pH 7.3) containing 1% BSA, 50% glycerol and 0.02% sodium azide.
Concentration:	0.5 mg/ml
Purification:	Purified from mouse ascites fluids or tissue culture supernatant by affinity chromatography (protein A/G)
Conjugation:	Biotin
Storage:	Store at -20°C as received.
Stability:	Stable for 12 months from date of receipt.
Gene Name:	tet methylcytosine dioxygenase 3
Database Link:	NP_659430 Entrez Gene 194388 Mouse Entrez Gene 680576 Rat Entrez Gene 200424 Human O43151
Background:	Members of the ten-eleven translocation (TET) gene family, including TET3, play a role in the DNA methylation process (Langemeijer et al., 2009 [PubMed 19923888]). [supplied by OMIM, Nov
Synonyms:	hCG_40738
Protein Families:	Transcription Factors



[View online »](#)

Product images:

HEK293T cells were transfected with the pCMV6-ENTRY control (Left lane) or pCMV6-ENTRY TET3 ([RC214497], Right lane) cDNA for 48 hrs and lysed. Equivalent amounts of cell lysates (5 ug per lane) were separated by SDS-PAGE and immunoblotted with anti-TET3.



Immunohistochemical staining of paraffin-embedded Human tonsil within the normal limits using anti-TET3 mouse monoclonal antibody. (Heat-induced epitope retrieval by 1mM EDTA in 10mM Tris, pH8.5, 120°C for 3min, [TA803982])