

Product datasheet for **TA803968AM**

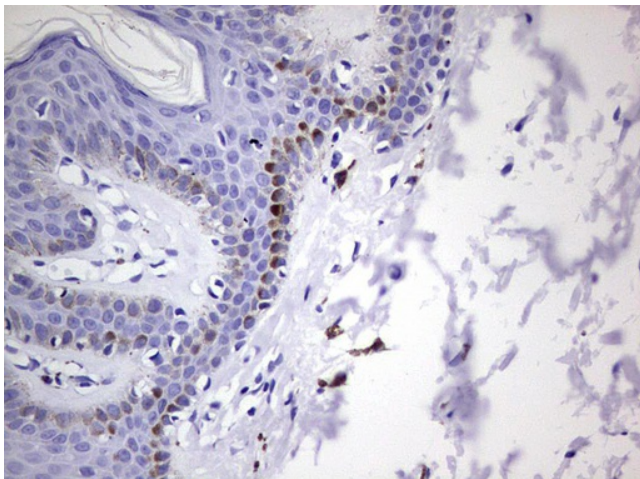
GLI1 Mouse Monoclonal Antibody (Biotin conjugated) [Clone ID: OTI4A8]

Product data:

Product Type:	Primary Antibodies
Clone Name:	OTI4A8
Applications:	IHC
Recommended Dilution:	IHC 1:150
Reactivity:	Human, Mouse, Rat
Host:	Mouse
Isotype:	IgG1
Clonality:	Monoclonal
Immunogen:	Human recombinant protein fragment corresponding to amino acids 755-1106 of human GLI1 (NP_005260) produced in E.coli.
Formulation:	PBS (pH 7.3) containing 1% BSA, 50% glycerol and 0.02% sodium azide.
Concentration:	0.5 mg/ml
Purification:	Purified from mouse ascites fluids or tissue culture supernatant by affinity chromatography (protein A/G)
Conjugation:	Biotin
Storage:	Store at -20°C as received.
Stability:	Stable for 12 months from date of receipt.
Predicted Protein Size:	117.7 kDa
Gene Name:	GLI family zinc finger 1
Database Link:	NP_005260 Entrez Gene 14632 Mouse Entrez Gene 2735 Human P08151
Synonyms:	GLI
Protein Families:	Adult stem cells, Cancer stem cells, Druggable Genome, Embryonic stem cells, ES Cell Differentiation/IPS, Stem cell relevant signaling - DSL/Notch pathway, Transcription Factors
Protein Pathways:	Basal cell carcinoma, Hedgehog signaling pathway, Pathways in cancer



[View online »](#)

Product images:

Immunohistochemical staining of paraffin-embedded Human skin tissue using anti-GLI1 mouse monoclonal antibody. (Heat-induced epitope retrieval by 1mM EDTA in 10mM Tris, pH8.5, 120°C for 3min, [TA803968])