

Product datasheet for **TA803960S**

PPIL1 Mouse Monoclonal Antibody [Clone ID: OTI6H2]

Product data:

Product Type:	Primary Antibodies
Clone Name:	OTI6H2
Applications:	WB
Recommended Dilution:	WB 1:2000
Reactivity:	Human, Mouse, Rat
Host:	Mouse
Isotype:	IgG2a
Clonality:	Monoclonal
Immunogen:	Full length human recombinant protein of human PPIL1 (NP_057143) produced in E.coli.
Formulation:	PBS (pH 7.3) containing 1% BSA, 50% glycerol and 0.02% sodium azide.
Concentration:	1 mg/ml
Purification:	Purified from mouse ascites fluids or tissue culture supernatant by affinity chromatography (protein A/G)
Conjugation:	Unconjugated
Storage:	Store at -20°C as received.
Stability:	Stable for 12 months from date of receipt.
Predicted Protein Size:	18.1 kDa
Gene Name:	peptidylprolyl isomerase like 1
Database Link:	NP_057143 Entrez Gene 68816 Mouse Entrez Gene 309651 Rat Entrez Gene 51645 Human Q9Y3C6
Background:	This gene is a member of the cyclophilin family of peptidylprolyl isomerases (PPIases). The cyclophilins are a highly conserved, ubiquitous family, members of which play an important role in protein folding, immunosuppression by cyclosporin A, and infection of HIV-1 virions. Based on similarity to other PPIases, this protein could accelerate the folding of proteins and might catalyze the cis-trans isomerization of proline imidic peptide bonds in oligopeptides. [provided by RefSeq, Jul 2008]

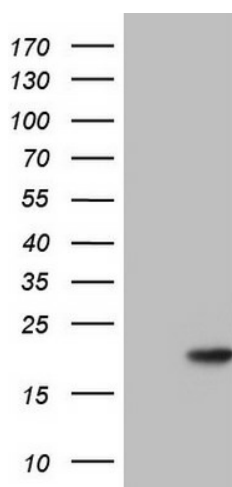


[View online »](#)

Synonyms: CGI-124; CYPL1; hCyPX; PCH14; PPlase

Protein Pathways: Spliceosome

Product images:



HEK293T cells were transfected with the pCMV6-ENTRY control (Left lane) or pCMV6-ENTRY PPIL1 ([RC200015], Right lane) cDNA for 48 hrs and lysed. Equivalent amounts of cell lysates (5 ug per lane) were separated by SDS-PAGE and immunoblotted with anti-PPIL1. Positive lysates [LY414224] (100ug) and [LC414224] (20ug) can be purchased separately from OriGene.