

Product datasheet for **TA803959BM**

L Kynurenine Hydrolase (KYNU) Mouse Monoclonal Antibody (HRP conjugated) [Clone ID: OTI1H1]

Product data:

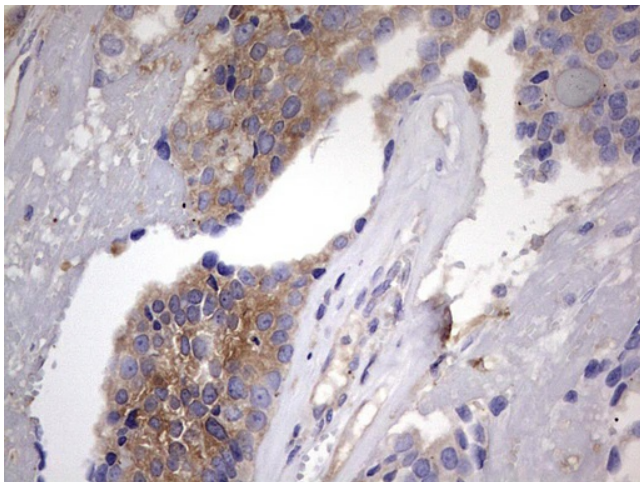
Product Type:	Primary Antibodies
Clone Name:	OTI1H1
Applications:	IHC
Recommended Dilution:	IHC 1:150
Reactivity:	Human, Rat
Host:	Mouse
Isotype:	IgG2b
Clonality:	Monoclonal
Immunogen:	Human recombinant protein fragment corresponding to amino acids 1-216 of human KYNU (NP_001028170) produced in E.coli.
Formulation:	PBS (pH 7.3) containing 1% BSA, 50% glycerol.
Concentration:	0.5 mg/ml
Purification:	Purified from mouse ascites fluids or tissue culture supernatant by affinity chromatography (protein A/G)
Conjugation:	HRP
Storage:	Store at -20°C as received.
Stability:	Stable for 12 months from date of receipt.
Predicted Protein Size:	34.5 kDa
Gene Name:	kynureninase
Database Link:	NP_001028170 Entrez Gene 116682 Rat Entrez Gene 8942 Human Q16719
Background:	Kynureninase is a pyridoxal-5'-phosphate (pyridoxal-P) dependent enzyme that catalyzes the cleavage of L-kynurenine and L-3-hydroxykynurenine into anthranilic and 3-hydroxyanthranilic acids, respectively. Kynureninase is involved in the biosynthesis of NAD cofactors from tryptophan through the kynurenine pathway. Alternative splicing results in multiple transcript variants. [provided by RefSeq, Nov 2010]



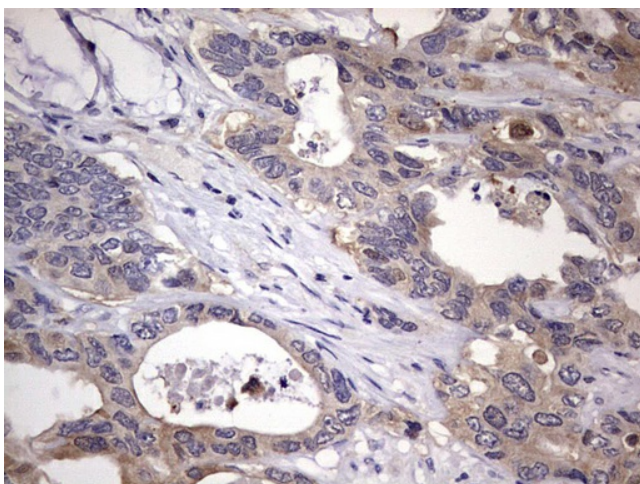
[View online »](#)

Synonyms: KYNUU
Protein Families: Protease
Protein Pathways: Metabolic pathways, Tryptophan metabolism

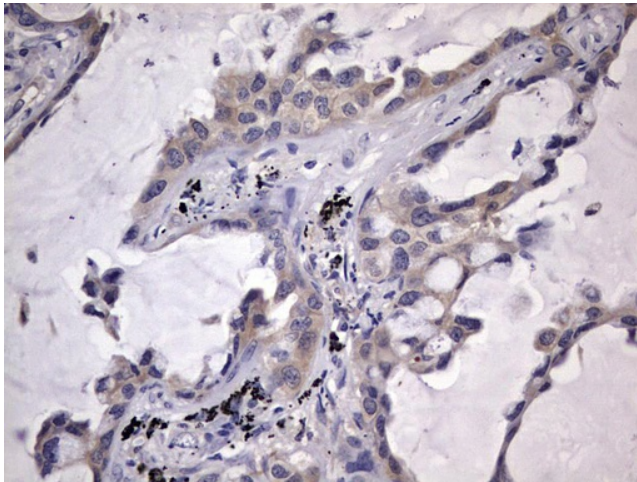
Product images:



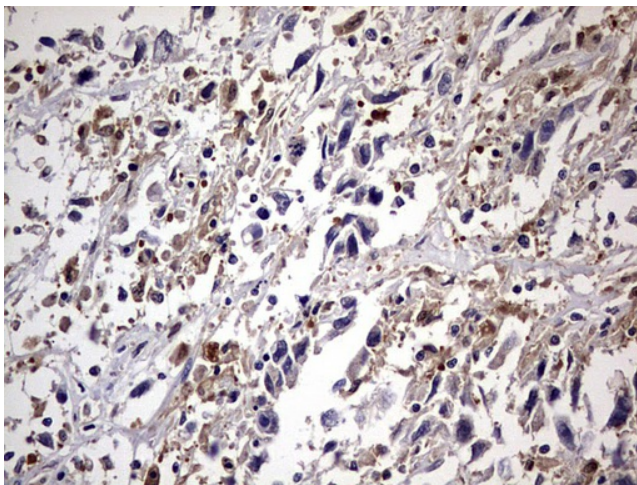
Immunohistochemical staining of paraffin-embedded Adenocarcinoma of Human breast tissue using anti-KYNU mouse monoclonal antibody. ([TA803959]; heat-induced epitope retrieval by 1mM EDTA in 10mM Tris, pH8.5, 120°C for 3min)



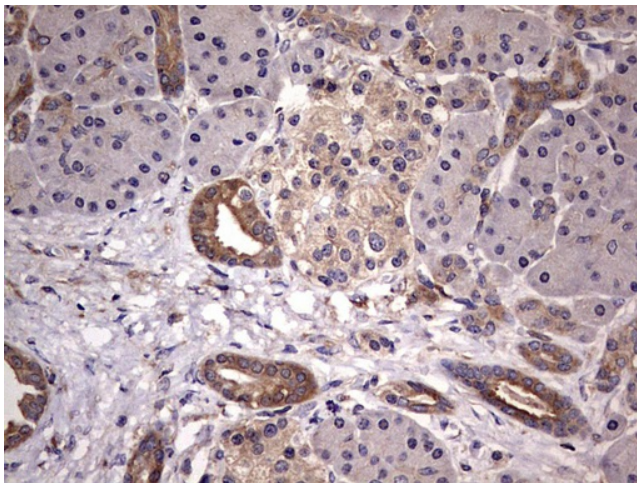
Immunohistochemical staining of paraffin-embedded Adenocarcinoma of Human colon tissue using anti-KYNU mouse monoclonal antibody. ([TA803959]; heat-induced epitope retrieval by 1mM EDTA in 10mM Tris, pH8.5, 120°C for 3min)



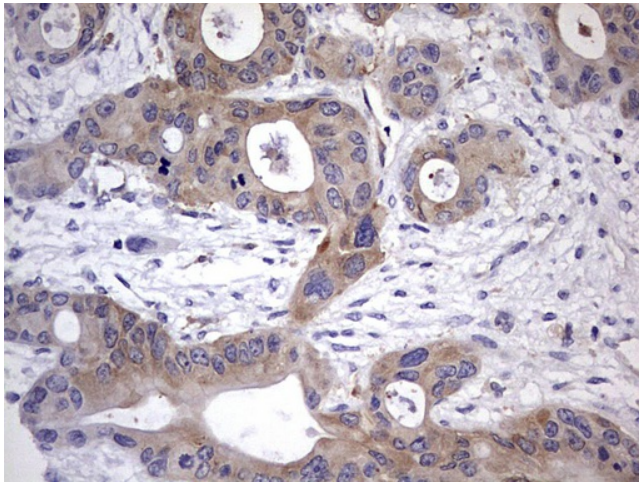
Immunohistochemical staining of paraffin-embedded Carcinoma of Human lung tissue using anti-KYNU mouse monoclonal antibody. ([TA803959]; heat-induced epitope retrieval by 1mM EDTA in 10mM Tris, pH8.5, 120°C for 3min)



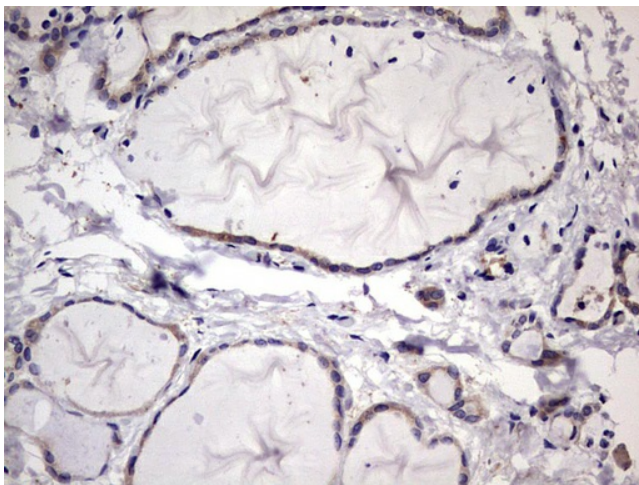
Immunohistochemical staining of paraffin-embedded Adenocarcinoma of Human ovary tissue using anti-KYNU mouse monoclonal antibody. ([TA803959]; heat-induced epitope retrieval by 1mM EDTA in 10mM Tris, pH8.5, 120°C for 3min)



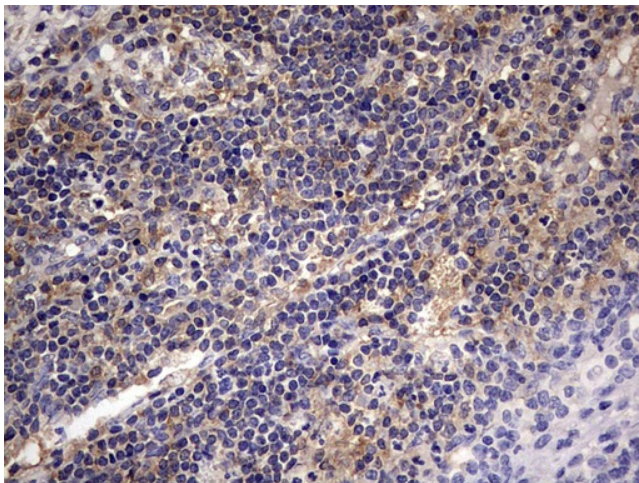
Immunohistochemical staining of paraffin-embedded Human pancreas tissue within the normal limits using anti-KYNU mouse monoclonal antibody. ([TA803959]; heat-induced epitope retrieval by 1mM EDTA in 10mM Tris, pH8.5, 120°C for 3min)



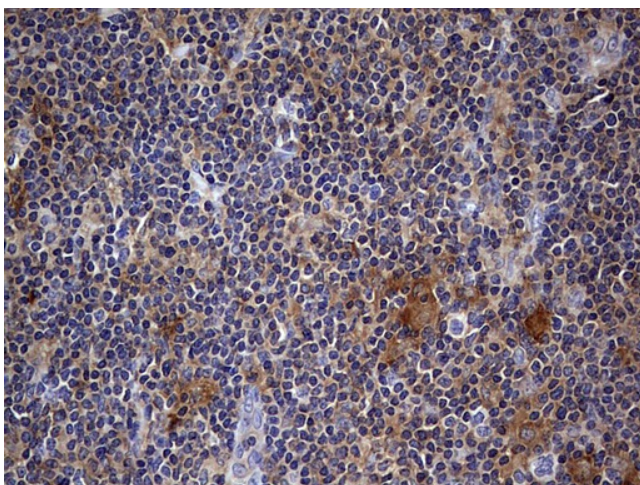
Immunohistochemical staining of paraffin-embedded Carcinoma of Human pancreas tissue using anti-KYNU mouse monoclonal antibody. ([TA803959]; heat-induced epitope retrieval by 1mM EDTA in 10mM Tris, pH8.5, 120°C for 3min)



Immunohistochemical staining of paraffin-embedded Human thyroid tissue within the normal limits using anti-KYNU mouse monoclonal antibody. ([TA803959]; heat-induced epitope retrieval by 1mM EDTA in 10mM Tris, pH8.5, 120°C for 3min)



Immunohistochemical staining of paraffin-embedded Human lymph node tissue within the normal limits using anti-KYNU mouse monoclonal antibody. ([TA803959]; heat-induced epitope retrieval by 1mM EDTA in 10mM Tris, pH8.5, 120°C for 3min)



Immunohistochemical staining of paraffin-embedded Human lymphoma tissue using anti-KYNU mouse monoclonal antibody. ([TA803959]; heat-induced epitope retrieval by 1mM EDTA in 10mM Tris, pH8.5, 120°C for 3min)