

Product datasheet for **TA803954BM**

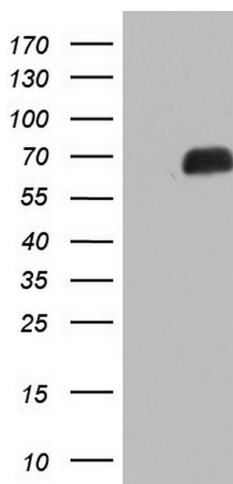
NAB2 Mouse Monoclonal Antibody (HRP conjugated) [Clone ID: OTI6D10]

Product data:

Product Type:	Primary Antibodies
Clone Name:	OTI6D10
Applications:	WB
Recommended Dilution:	WB 1:2000
Reactivity:	Human, Mouse, Rat
Host:	Mouse
Isotype:	IgG1
Clonality:	Monoclonal
Immunogen:	Human recombinant protein fragment corresponding to amino acids 178-442 of human NAB2 (NP_005958) produced in E.coli.
Formulation:	PBS (pH 7.3) containing 1% BSA, 50% glycerol.
Concentration:	0.5 mg/ml
Purification:	Purified from mouse ascites fluids or tissue culture supernatant by affinity chromatography (protein A/G)
Conjugation:	HRP
Storage:	Store at -20°C as received.
Stability:	Stable for 12 months from date of receipt.
Predicted Protein Size:	56.4 kDa
Gene Name:	NGFI-A binding protein 2
Database Link:	NP_005958 Entrez Gene 17937 Mouse Entrez Gene 4665 Human Q15742
Synonyms:	MADER
Protein Families:	Transcription Factors



[View online »](#)

Product images:

HEK293T cells were transfected with the pCMV6-ENTRY control (Left lane) or pCMV6-ENTRY NAB2 ([RC209554], Right lane) cDNA for 48 hrs and lysed. Equivalent amounts of cell lysates (5 ug per lane) were separated by SDS-PAGE and immunoblotted with anti-NAB2. Positive lysates [LY416951] (100ug) and [LC416951] (20ug) can be purchased separately from OriGene.