

## Product datasheet for **TA803930S**

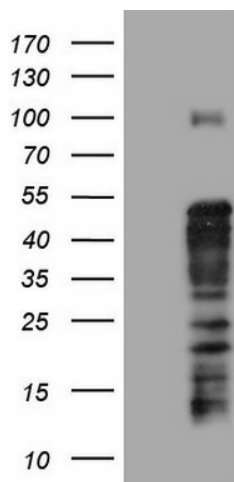
### **TET3 Mouse Monoclonal Antibody [Clone ID: OTI11H8]**

#### **Product data:**

<b>Product Type:</b>	Primary Antibodies
<b>Clone Name:</b>	OTI11H8
<b>Applications:</b>	WB
<b>Recommended Dilution:</b>	WB 1:500
<b>Reactivity:</b>	Human, Mouse, Rat
<b>Host:</b>	Mouse
<b>Isotype:</b>	IgG1
<b>Clonality:</b>	Monoclonal
<b>Immunogen:</b>	Human recombinant protein fragment corresponding to amino acids 241-568 of human TET3 (NP_659430) produced in E.coli.
<b>Formulation:</b>	PBS (pH 7.3) containing 1% BSA, 50% glycerol and 0.02% sodium azide.
<b>Concentration:</b>	1 mg/ml
<b>Purification:</b>	Purified from mouse ascites fluids or tissue culture supernatant by affinity chromatography (protein A/G)
<b>Conjugation:</b>	Unconjugated
<b>Storage:</b>	Store at -20°C as received.
<b>Stability:</b>	Stable for 12 months from date of receipt.
<b>Gene Name:</b>	tet methylcytosine dioxygenase 3
<b>Database Link:</b>	<a href="#">NP_659430</a> <a href="#">Entrez Gene 194388 MouseEntrez Gene 680576 RatEntrez Gene 200424 Human O43151</a>
<b>Background:</b>	Members of the ten-eleven translocation (TET) gene family, including TET3, play a role in the DNA methylation process (Langemeijer et al., 2009 [PubMed 19923888]). [supplied by OMIM, Nov
<b>Synonyms:</b>	hCG_40738
<b>Protein Families:</b>	Transcription Factors



[View online »](#)

**Product images:**

Human recombinant protein fragment corresponding to amino acids 241-568 of human TET3 (NP\_659430) produced in E.coli.