

Product datasheet for **TA803930**

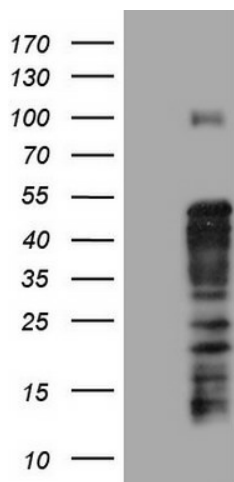
TET3 Mouse Monoclonal Antibody [Clone ID: OTI11H8]

Product data:

Product Type:	Primary Antibodies
Clone Name:	OTI11H8
Applications:	WB
Recommended Dilution:	WB 1:500
Reactivity:	Human, Mouse, Rat
Host:	Mouse
Isotype:	IgG1
Clonality:	Monoclonal
Immunogen:	Human recombinant protein fragment corresponding to amino acids 241-568 of human TET3 (NP_659430) produced in E.coli.
Formulation:	PBS (pH 7.3) containing 1% BSA, 50% glycerol and 0.02% sodium azide.
Concentration:	1 mg/ml
Purification:	Purified from mouse ascites fluids or tissue culture supernatant by affinity chromatography (protein A/G)
Conjugation:	Unconjugated
Storage:	Store at -20°C as received.
Stability:	Stable for 12 months from date of receipt.
Gene Name:	tet methylcytosine dioxygenase 3
Database Link:	NP_659430 Entrez Gene 194388 MouseEntrez Gene 680576 RatEntrez Gene 200424 Human O43151
Background:	Members of the ten-eleven translocation (TET) gene family, including TET3, play a role in the DNA methylation process (Langemeijer et al., 2009 [PubMed 19923888]). [supplied by OMIM, Nov
Synonyms:	hCG_40738
Protein Families:	Transcription Factors



[View online »](#)

Product images:

Human recombinant protein fragment corresponding to amino acids 241-568 of human TET3 (NP_659430) produced in E.coli.