

## Product datasheet for **TA803916**

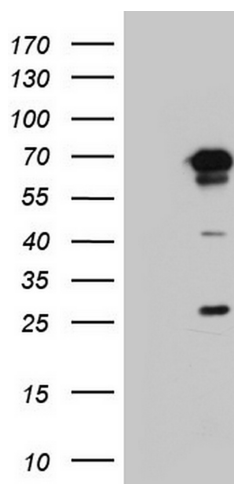
### PPP2R5D Mouse Monoclonal Antibody [Clone ID: OTI5E7]

#### Product data:

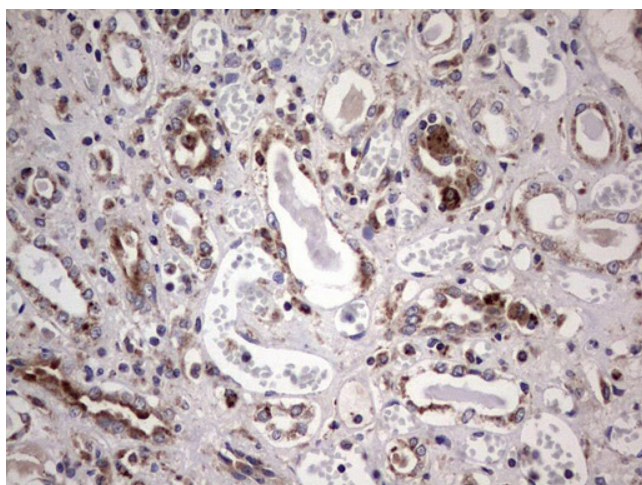
Product Type:	Primary Antibodies
Clone Name:	OTI5E7
Applications:	IHC, WB
Recommended Dilution:	WB 1:2000, IHC 1:150
Reactivity:	Human, Mouse, Rat
Host:	Mouse
Isotype:	IgG2b
Clonality:	Monoclonal
Immunogen:	Full length human recombinant protein of human PPP2R5D (NP_006236) produced in E.coli.
Formulation:	PBS (pH 7.3) containing 1% BSA, 50% glycerol and 0.02% sodium azide.
Concentration:	1 mg/ml
Purification:	Purified from mouse ascites fluids or tissue culture supernatant by affinity chromatography (protein A/G)
Conjugation:	Unconjugated
Storage:	Store at -20°C as received.
Stability:	Stable for 12 months from date of receipt.
Predicted Protein Size:	69.8 kDa
Gene Name:	protein phosphatase 2 regulatory subunit B'delta
Database Link:	<a href="#">NP_006236</a> <a href="#">Entrez Gene 21770 Mouse</a> <a href="#">Entrez Gene 363193 Rat</a> <a href="#">Entrez Gene 5528 Human</a> <a href="#">Q14738</a>
Synonyms:	B56D; MRD35
Protein Families:	Phosphatase
Protein Pathways:	Oocyte meiosis, Wnt signaling pathway



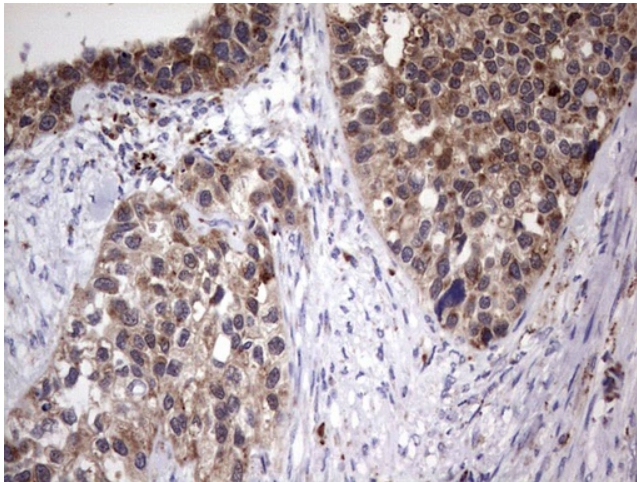
[View online »](#)

**Product images:**

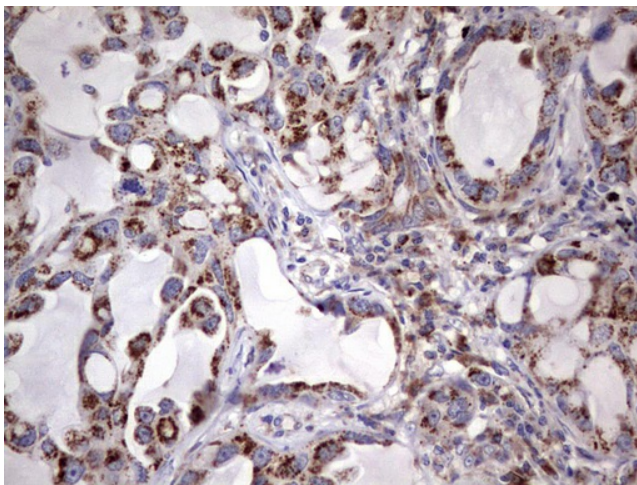
HEK293T cells were transfected with the pCMV6-ENTRY control (Cat# [PS100001], Left lane) or pCMV6-ENTRY PPP2R5D (Cat# [RC201945], Right lane) cDNA for 48 hrs and lysed. Equivalent amounts of cell lysates (5 ug per lane) were separated by SDS-PAGE and immunoblotted with anti-PPP2R5D (Cat# TA803916). Positive lysates [LY416775] (100ug) and [LC416775] (20ug) can be purchased separately from OriGene.



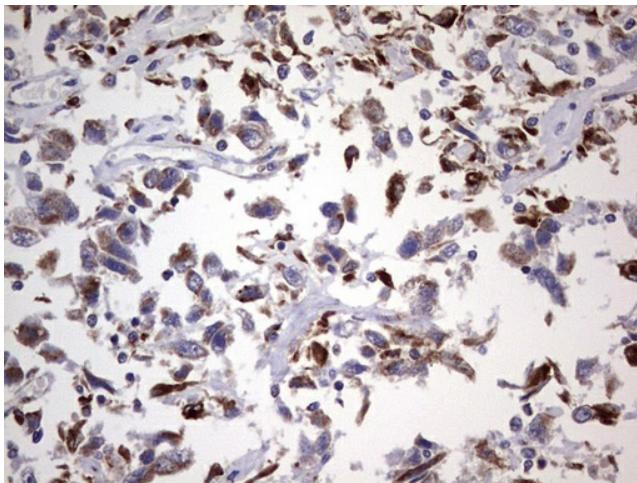
Immunohistochemical staining of paraffin-embedded Human Kidney tissue within the normal limits using anti-PPP2R5D mouse monoclonal antibody. (Heat-induced epitope retrieval by 1mM EDTA in 10mM Tris, pH8.5, 120°C for 3min, TA803916)



Immunohistochemical staining of paraffin-embedded Carcinoma of Human kidney tissue using anti-PPP2R5D mouse monoclonal antibody. (Heat-induced epitope retrieval by 1mM EDTA in 10mM Tris, pH8.5, 120°C for 3min, TA803916)



Immunohistochemical staining of paraffin-embedded Carcinoma of Human lung tissue using anti-PPP2R5D mouse monoclonal antibody. (Heat-induced epitope retrieval by 1mM EDTA in 10mM Tris, pH8.5, 120°C for 3min, TA803916)



Immunohistochemical staining of paraffin-embedded Adenocarcinoma of Human ovary tissue using anti-PPP2R5D mouse monoclonal antibody. (Heat-induced epitope retrieval by 1mM EDTA in 10mM Tris, pH8.5, 120°C for 3min, TA803916)