

Product datasheet for **TA803910BM**

TRIM27 Mouse Monoclonal Antibody (HRP conjugated) [Clone ID: OTI4D4]

Product data:

Product Type:	Primary Antibodies
Clone Name:	OTI4D4
Applications:	IHC, WB
Recommended Dilution:	WB 1:2000, IHC 1:150
Reactivity:	Human, Mouse, Rat
Host:	Mouse
Isotype:	IgG1
Clonality:	Monoclonal
Immunogen:	Full length human recombinant protein of human TRIM27 (NP_006501) produced in E.coli.
Formulation:	PBS (pH 7.3) containing 1% BSA, 50% glycerol.
Concentration:	0.5 mg/ml
Purification:	Purified from mouse ascites fluids or tissue culture supernatant by affinity chromatography (protein A/G)
Conjugation:	HRP
Storage:	Store at -20°C as received.
Stability:	Stable for 12 months from date of receipt.
Predicted Protein Size:	58.3 kDa
Gene Name:	tripartite motif containing 27
Database Link:	NP_006501 Entrez Gene 19720 Mouse Entrez Gene 291171 Rat Entrez Gene 5987 Human P14373
Background:	This gene encodes a member of the tripartite motif (TRIM) family. The TRIM motif includes three zinc-binding domains, a RING, a B-box type 1 and a B-box type 2, and a coiled-coil region. This protein localizes to the nuclear matrix. It interacts with the enhancer of polycomb protein and represses gene transcription. It is also thought to be involved in the differentiation of male germ cells. Fusion of the N-terminus of this protein with the truncated C-terminus of the RET gene product has been shown to result in production of the ret transforming protein. [provided by RefSeq, Jul 2008]

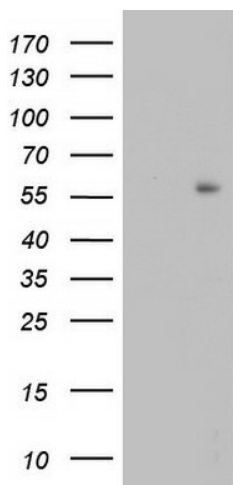


[View online »](#)

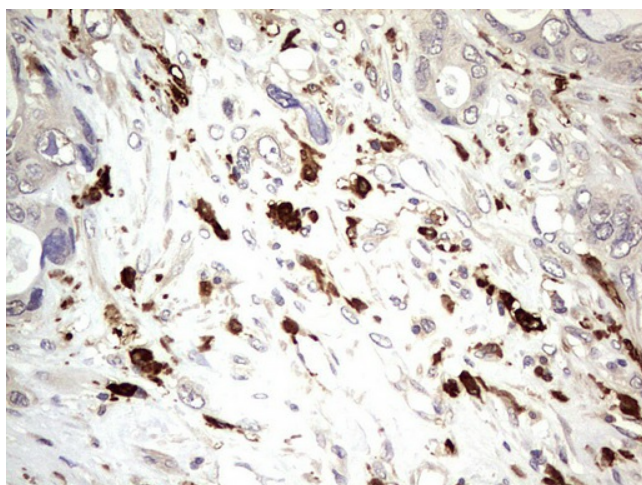
Synonyms: RFP; RNF76

Protein Families: Druggable Genome, Transcription Factors

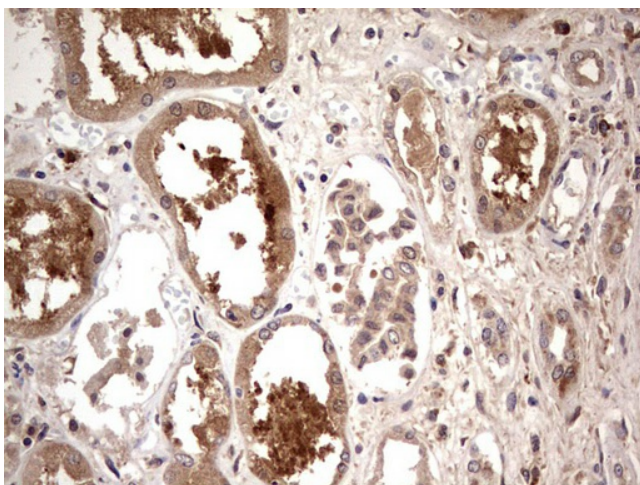
Product images:



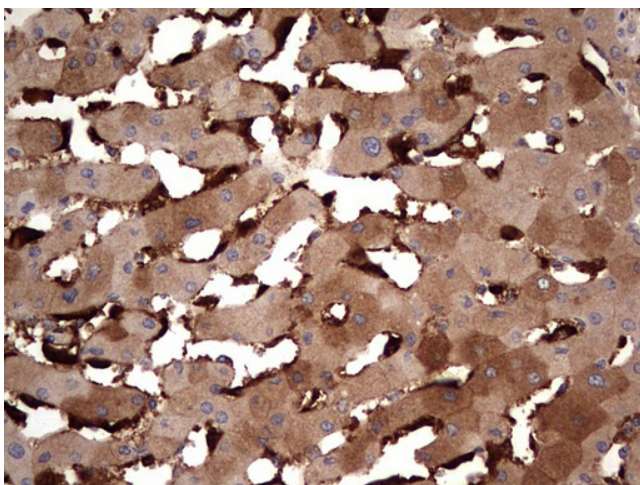
HEK293T cells were transfected with the pCMV6-ENTRY control (Cat# [PS100001], Left lane) or pCMV6-ENTRY TRIM27 (Cat# [RC202184], Right lane) cDNA for 48 hrs and lysed. Equivalent amounts of cell lysates (5 ug per lane) were separated by SDS-PAGE and immunoblotted with anti-TRIM27 (Cat# [TA803910]). Positive lysates [LY401952] (100ug) and [LC401952] (20ug) can be purchased separately from OriGene.



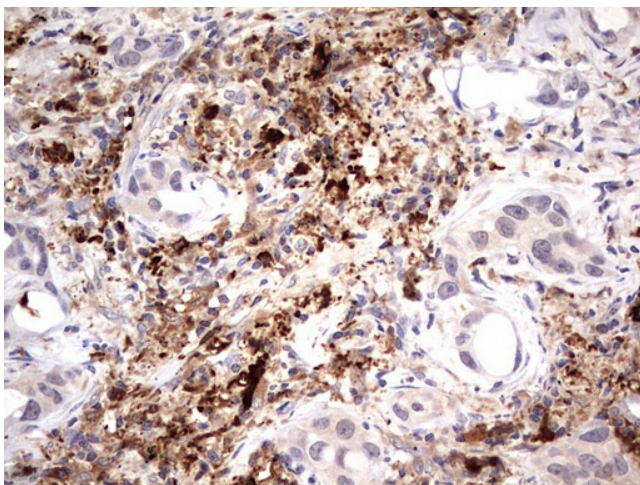
Immunohistochemical staining of paraffin-embedded Adenocarcinoma of Human colon tissue using anti-TRIM27 mouse monoclonal antibody. (Heat-induced epitope retrieval by 1mM EDTA in 10mM Tris, pH8.5, 120°C for 3min, [TA803910])



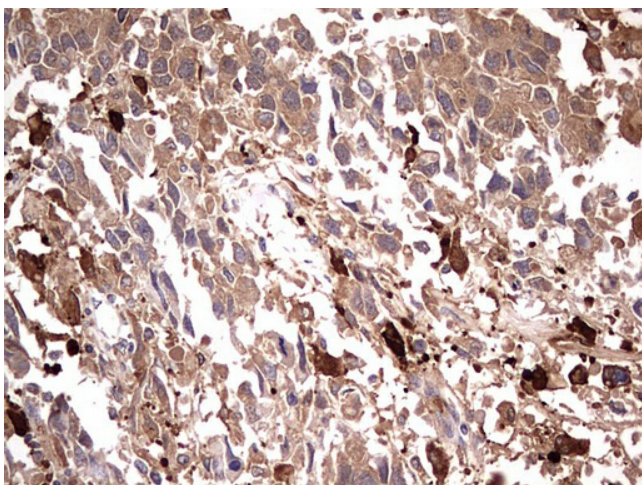
Immunohistochemical staining of paraffin-embedded Human Kidney tissue within the normal limits using anti-TRIM27 mouse monoclonal antibody. (Heat-induced epitope retrieval by 1mM EDTA in 10mM Tris, pH8.5, 120°C for 3min, [TA803910])



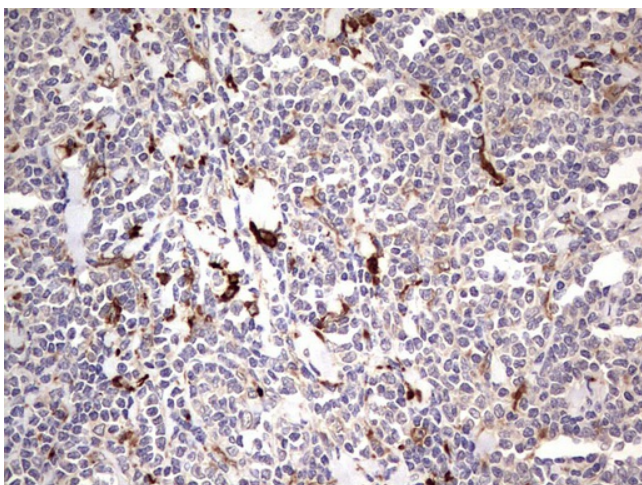
Immunohistochemical staining of paraffin-embedded Human liver tissue within the normal limits using anti-TRIM27 mouse monoclonal antibody. (Heat-induced epitope retrieval by 1mM EDTA in 10mM Tris, pH8.5, 120°C for 3min, [TA803910])



Immunohistochemical staining of paraffin-embedded Carcinoma of Human lung tissue using anti-TRIM27 mouse monoclonal antibody. (Heat-induced epitope retrieval by 1mM EDTA in 10mM Tris, pH8.5, 120°C for 3min, [TA803910])



Immunohistochemical staining of paraffin-embedded Adenocarcinoma of Human ovary tissue using anti-TRIM27 mouse monoclonal antibody. (Heat-induced epitope retrieval by 1mM EDTA in 10mM Tris, pH8.5, 120°C for 3min, [TA803910])



Immunohistochemical staining of paraffin-embedded Human lymphoma tissue using anti-TRIM27 mouse monoclonal antibody. (Heat-induced epitope retrieval by 1mM EDTA in 10mM Tris, pH8.5, 120°C for 3min, [TA803910])