

Product datasheet for **TA803901S**

C14orf166 (RTRAF) Mouse Monoclonal Antibody [Clone ID: OTI2B5]

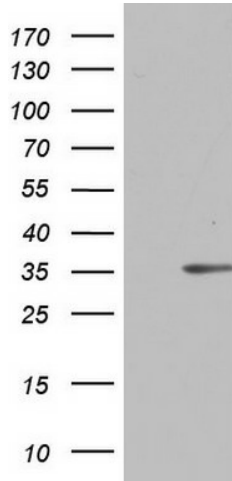
Product data:

Product Type:	Primary Antibodies
Clone Name:	OTI2B5
Applications:	WB
Recommended Dilution:	WB 1:2000
Reactivity:	Human
Host:	Mouse
Isotype:	IgG2b
Clonality:	Monoclonal
Immunogen:	Full length human recombinant protein of human C14orf166 (NP_057123) produced in E.coli.
Formulation:	PBS (pH 7.3) containing 1% BSA, 50% glycerol and 0.02% sodium azide.
Concentration:	1 mg/ml
Purification:	Purified from mouse ascites fluids or tissue culture supernatant by affinity chromatography (protein A/G)
Conjugation:	Unconjugated
Storage:	Store at -20°C as received.
Stability:	Stable for 12 months from date of receipt.
Gene Name:	chromosome 14 open reading frame 166
Database Link:	NP_057123 Entrez Gene 51637 Human Q9Y224
Synonyms:	CGI-99; CGI99; CLE; CLE7; hCLE1; LCRP369; RLLM1

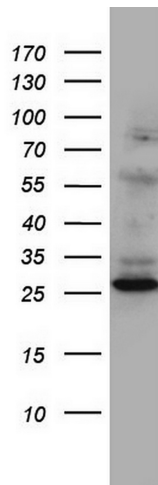


[View online »](#)

Product images:



HEK293T cells were transfected with the pCMV6-ENTRY control (Left lane) or pCMV6-ENTRY C14orf166 ([RC200016], Right lane) cDNA for 48 hrs and lysed. Equivalent amounts of cell lysates (5 ug per lane) were separated by SDS-PAGE and immunoblotted with anti-C14orf166. Positive lysates [LY414235] (100ug) and [LC414235] (20ug) can be purchased separately from OriGene.



Western blot analysis of A549 cell lysate (35ug) by using anti-C14orf166 monoclonal antibody. Dilution: 1:500