

Product datasheet for **TA803851AM**

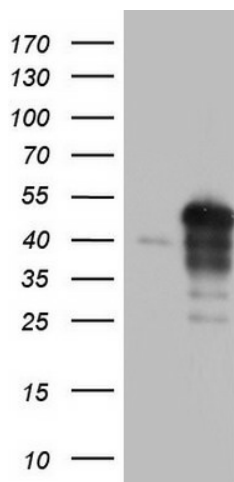
NRBF2 Mouse Monoclonal Antibody (Biotin conjugated) [Clone ID: OTI1D2]

Product data:

Product Type:	Primary Antibodies
Clone Name:	OTI1D2
Applications:	WB
Recommended Dilution:	WB 1:2000
Reactivity:	Human, Mouse, Rat
Host:	Mouse
Isotype:	IgG1
Clonality:	Monoclonal
Immunogen:	Full length human recombinant protein of human NRBF2 (NP_110386) produced in E.coli.
Formulation:	PBS (pH 7.3) containing 1% BSA, 50% glycerol and 0.02% sodium azide.
Concentration:	0.5 mg/ml
Purification:	Purified from mouse ascites fluids or tissue culture supernatant by affinity chromatography (protein A/G)
Conjugation:	Biotin
Storage:	Store at -20°C as received.
Stability:	Stable for 12 months from date of receipt.
Predicted Protein Size:	32.2 kDa
Gene Name:	nuclear receptor binding factor 2
Database Link:	NP_110386 Entrez Gene 58839 Rat Entrez Gene 641340 Mouse Entrez Gene 29982 Human Q96F24
Synonyms:	COPR; COPR1; COPR2; NRBF-2
Protein Families:	Druggable Genome



[View online »](#)

Product images:

HEK293T cells were transfected with the pCMV6-ENTRY control (Left lane) or pCMV6-ENTRY NRBF2 ([RC204061], Right lane) cDNA for 48 hrs and lysed. Equivalent amounts of cell lysates (5 ug per lane) were separated by SDS-PAGE and immunoblotted with anti-NRBF2. Positive lysates [LY410731] (100ug) and [LC410731] (20ug) can be purchased separately from OriGene.