

Product datasheet for **TA803844BM**

ACE2 Mouse Monoclonal Antibody (HRP conjugated) [Clone ID: OTI4C5] (Angiotensin Converting Enzyme 2)

Product data:

Product Type:	Primary Antibodies
Clone Name:	OTI4C5
Applications:	IHC, WB
Recommended Dilution:	WB 1:2000, IHC 1:150
Reactivity:	Human
Host:	Mouse
Isotype:	IgG1
Clonality:	Monoclonal
Immunogen:	Human recombinant protein fragment corresponding to amino acids 18-237 of human ACE2 (NP_068576) produced in E.coli.
Formulation:	PBS (pH 7.3) containing 1% BSA, 50% glycerol.
Concentration:	0.5 mg/ml
Purification:	Purified from mouse ascites fluids or tissue culture supernatant by affinity chromatography (protein A/G)
Conjugation:	HRP
Storage:	Store at -20°C as received.
Stability:	Stable for 12 months from date of receipt.
Gene Name:	angiotensin I converting enzyme 2
Database Link:	NP_068576 Entrez Gene 59272 Human Q9BYF1



[View online »](#)

Background:

The protein encoded by this gene belongs to the angiotensin-converting enzyme family of dipeptidyl carboxydipeptidases and has considerable homology to human angiotensin 1 converting enzyme. This secreted protein catalyzes the cleavage of angiotensin I into angiotensin 1-9, and angiotensin II into the vasodilator angiotensin 1-7. The organ- and cell-specific expression of this gene suggests that it may play a role in the regulation of cardiovascular and renal function, as well as fertility. In addition, the encoded protein is a functional receptor for the spike glycoprotein of the human coronaviruses SARS and HCoV-NL63. [provided by RefSeq, Jul 2008]

Synonyms:

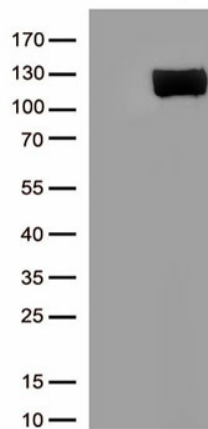
ACEH

Protein Families:

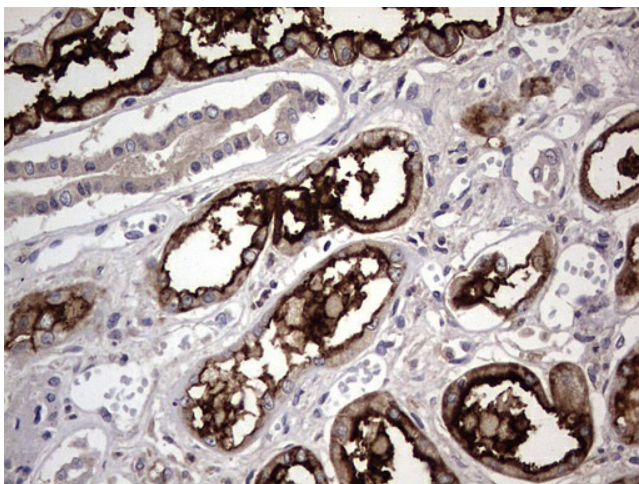
Druggable Genome, Secreted Protein, Transmembrane

Protein Pathways:

Renin-angiotensin system

Product images:

HEK293T cells were transfected with the pCMV6-ENTRY control (Left lane) or pCMV6-ENTRY ACE2 ([RC208442], Right lane) cDNA for 48 hrs and lysed. Equivalent amounts of cell lysates (5 ug per lane) were separated by SDS-PAGE and immunoblotted with anti-ACE2 ([TA803844]). (1:500)



Immunohistochemical staining of paraffin-embedded Human Kidney tissue within the normal limits using anti-ACE2 mouse monoclonal antibody. (Heat-induced epitope retrieval by 1mM EDTA in 10mM Tris, pH8.5, 120°C for 3min, [TA803844])