

Product datasheet for **TA803841**

ACE2 Mouse Monoclonal Antibody [Clone ID: OTI4D2] (Angiotensin Converting Enzyme 2)

Product data:

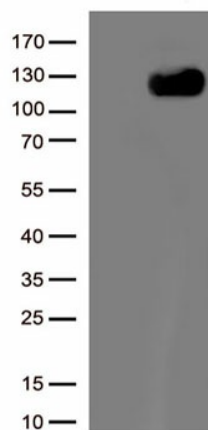
| | |
|-----------------------|--|
| Product Type: | Primary Antibodies |
| Clone Name: | OTI4D2 |
| Applications: | IHC, WB |
| Recommended Dilution: | WB 1:200, IHC 1:150 |
| Reactivity: | Human |
| Host: | Mouse |
| Isotype: | IgG2a |
| Clonality: | Monoclonal |
| Immunogen: | Human recombinant protein fragment corresponding to amino acids 18-237 of human ACE2 (NP_068576) produced in E.coli. |
| Formulation: | PBS (PH 7.3) containing 1% BSA, 50% glycerol and 0.02% sodium azide. |
| Concentration: | 1 mg/ml |
| Purification: | Purified from mouse ascites fluids or tissue culture supernatant by affinity chromatography (protein A/G) |
| Storage: | Store at -20°C as received. |
| Stability: | Stable for 12 months from date of receipt. |
| Gene Name: | angiotensin I converting enzyme 2 |
| Database Link: | NP_068576 Entrez Gene 59272 Human |
| Background: | The protein encoded by this gene belongs to the angiotensin-converting enzyme family of dipeptidyl carboxydipeptidases and has considerable homology to human angiotensin 1 converting enzyme. This secreted protein catalyzes the cleavage of angiotensin I into angiotensin 1-9, and angiotensin II into the vasodilator angiotensin 1-7. The organ- and cell-specific expression of this gene suggests that it may play a role in the regulation of cardiovascular and renal function, as well as fertility. In addition, the encoded protein is a functional receptor for the spike glycoprotein of the human coronaviruses SARS and HCoV-NL63. [provided by RefSeq, Jul 2008] |
| Synonyms: | ACEH |
| Protein Families: | Druggable Genome, Secreted Protein, Transmembrane |



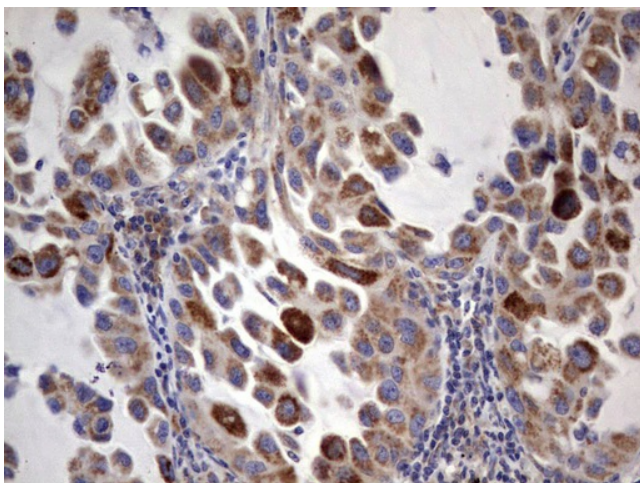
[View online »](#)

Protein Pathways: Renin-angiotensin system

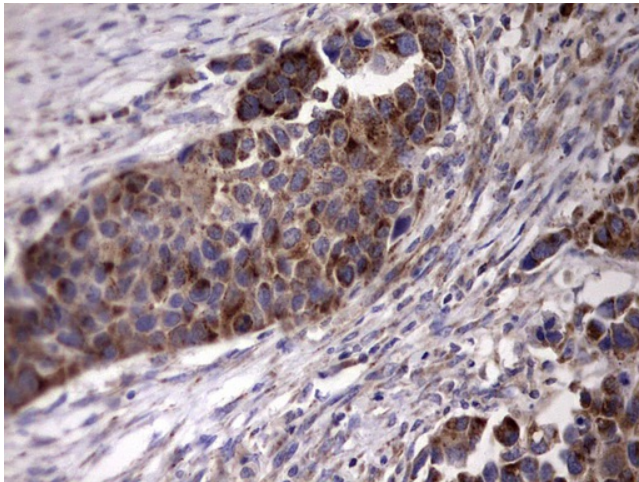
Product images:



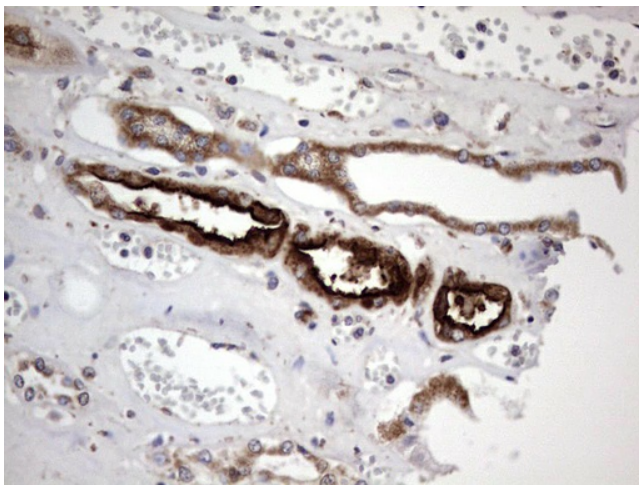
HEK293T cells were transfected with the pCMV6-ENTRY control (Left lane) or pCMV6-ENTRY ACE2 ([RC208442], Right lane) cDNA for 48 hrs and lysed. Equivalent amounts of cell lysates (5 ug per lane) were separated by SDS-PAGE and immunoblotted with anti-ACE2 (TA803841). (1:500)



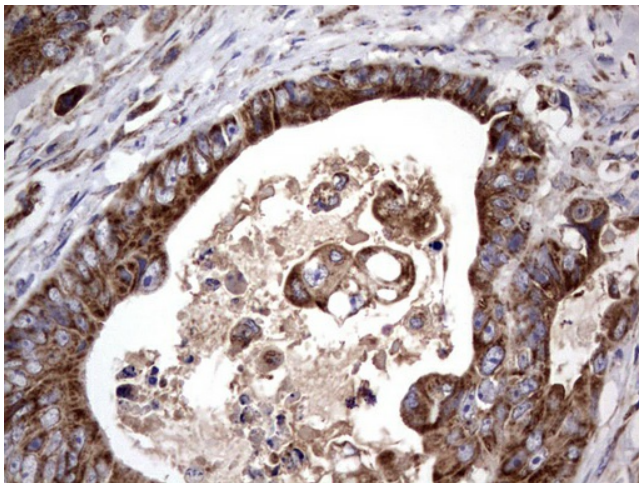
Immunohistochemical staining of paraffin-embedded Carcinoma of Human lung tissue using anti-ACE2 mouse monoclonal antibody. (Heat-induced epitope retrieval by 1 mM EDTA in 10mM Tris, pH8.5, 120°C for 3min, TA803841)



Immunohistochemical staining of paraffin-embedded Carcinoma of Human kidney tissue using anti-ACE2 mouse monoclonal antibody. (Heat-induced epitope retrieval by 1 mM EDTA in 10mM Tris, pH8.5, 120°C for 3min, TA803841)



Immunohistochemical staining of paraffin-embedded Human Kidney tissue within the normal limits using anti-ACE2 mouse monoclonal antibody. (Heat-induced epitope retrieval by 1 mM EDTA in 10mM Tris, pH8.5, 120°C for 3min, TA803841)



Immunohistochemical staining of paraffin-embedded Adenocarcinoma of Human colon tissue using anti-ACE2 mouse monoclonal antibody. (Heat-induced epitope retrieval by 1 mM EDTA in 10mM Tris, pH8.5, 120°C for 3min, TA803841)