

Product datasheet for **TA803803BM**

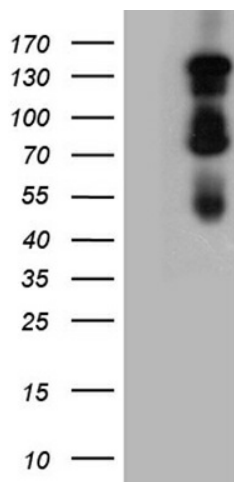
GLI1 Mouse Monoclonal Antibody (HRP conjugated) [Clone ID: OTI2B3]

Product data:

Product Type:	Primary Antibodies
Clone Name:	OTI2B3
Applications:	WB
Recommended Dilution:	WB 1:2000
Reactivity:	Human, Mouse, Rat
Host:	Mouse
Isotype:	IgG2a
Clonality:	Monoclonal
Immunogen:	Human recombinant protein fragment corresponding to amino acids 755-1106 of human GLI1 (NP_005260) produced in E.coli.
Formulation:	PBS (pH 7.3) containing 1% BSA, 50% glycerol.
Concentration:	0.5 mg/ml
Purification:	Purified from mouse ascites fluids or tissue culture supernatant by affinity chromatography (protein A/G)
Conjugation:	HRP
Storage:	Store at -20°C as received.
Stability:	Stable for 12 months from date of receipt.
Predicted Protein Size:	117.7 kDa
Gene Name:	GLI family zinc finger 1
Database Link:	NP_005260 Entrez Gene 14632 Mouse Entrez Gene 2735 Human P08151
Synonyms:	GLI
Protein Families:	Adult stem cells, Cancer stem cells, Druggable Genome, Embryonic stem cells, ES Cell Differentiation/IPS, Stem cell relevant signaling - DSL/Notch pathway, Transcription Factors
Protein Pathways:	Basal cell carcinoma, Hedgehog signaling pathway, Pathways in cancer



[View online »](#)

Product images:


HEK293T cells were transfected with the pCMV6-ENTRY control (Left lane) or pCMV6-ENTRY GLI1 ([RC201110], Right lane) cDNA for 48 hrs and lysed. Equivalent amounts of cell lysates (5 ug per lane) were separated by SDS-PAGE and immunoblotted with anti-GLI1 (1:2000). Positive lysates [LY417412] (100ug) and [LC417412] (20ug) can be purchased separately from OriGene.