

Product datasheet for **TA803800S**

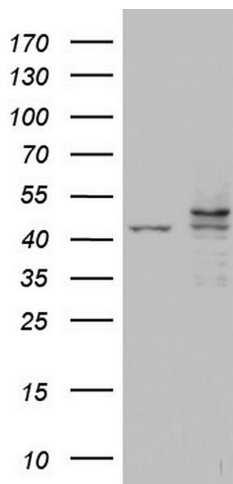
CK1 epsilon (CSNK1E) Mouse Monoclonal Antibody [Clone ID: OTI5C9]

Product data:

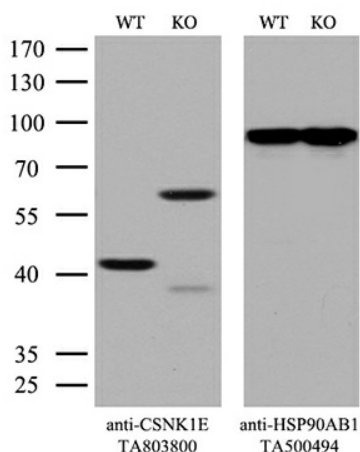
Product Type:	Primary Antibodies
Clone Name:	OTI5C9
Applications:	WB
Recommended Dilution:	WB 1:2000
Reactivity:	Human, Mouse, Rat
Host:	Mouse
Isotype:	IgG2a
Clonality:	Monoclonal
Immunogen:	Human recombinant protein fragment corresponding to amino acids 153-416 of human CSNK1E (NP_689407) produced in E.coli.
Formulation:	PBS (pH 7.3) containing 1% BSA, 50% glycerol and 0.02% sodium azide.
Concentration:	1 mg/ml
Purification:	Purified from mouse ascites fluids or tissue culture supernatant by affinity chromatography (protein A/G)
Conjugation:	Unconjugated
Storage:	Store at -20°C as received.
Stability:	Stable for 12 months from date of receipt.
Predicted Protein Size:	47.1 kDa
Gene Name:	casein kinase 1 epsilon
Database Link:	NP_689407 Entrez Gene 27373 Mouse Entrez Gene 58822 Rat Entrez Gene 1454 Human P49674
Synonyms:	CK1epsilon; HCKIE
Protein Families:	Druggable Genome, Protein Kinase
Protein Pathways:	Circadian rhythm - mammal, Hedgehog signaling pathway, Wnt signaling pathway



[View online »](#)

Product images:


HEK293T cells were transfected with the pCMV6-ENTRY control (Left lane) or pCMV6-ENTRY CSNK1E ([RC202436], Right lane) cDNA for 48 hrs and lysed. Equivalent amounts of cell lysates (5 ug per lane) were separated by SDS-PAGE and immunoblotted with anti-CSNK1E. Positive lysates [LY403455] (100ug) and [LC403455] (20ug) can be purchased separately from OriGene.



Equivalent amounts of cell lysates (10 ug per lane) of wild-type HeLa cells (WT, Cat# LC810HELA) and CSNK1E-Knockout HeLa cells (KO, Cat# [LC810054]) were separated by SDS-PAGE and immunoblotted with anti-CSNK1E monoclonal antibody [TA803800]. Then the blotted membrane was stripped and reprobed with anti-HSP90AB1 antibody ([TA500494]) as a loading control (1:500).