

Product datasheet for TA803799

CK1 epsilon (CSNK1E) Mouse Monoclonal Antibody [Clone ID: OTI5D4]

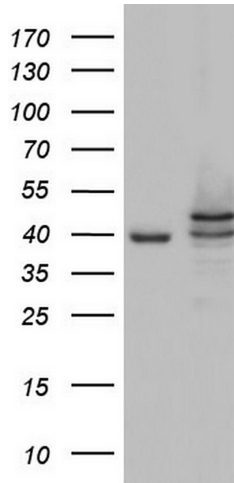
Product data:

Product Type:	Primary Antibodies
Clone Name:	OTI5D4
Applications:	IHC, WB
Recommended Dilution:	WB 1:2000, IHC 1:150
Reactivity:	Human, Mouse, Rat
Host:	Mouse
Isotype:	IgG1
Clonality:	Monoclonal
Immunogen:	Human recombinant protein fragment corresponding to amino acids 153-416 of human CSNK1E (NP_689407) produced in E.coli.
Formulation:	PBS (PH 7.3) containing 1% BSA, 50% glycerol and 0.02% sodium azide.
Concentration:	1 mg/ml
Purification:	Purified from mouse ascites fluids or tissue culture supernatant by affinity chromatography (protein A/G)
Storage:	Store at -20°C as received.
Stability:	Stable for 12 months from date of receipt.
Predicted Protein Size:	47.1 kDa
Gene Name:	casein kinase 1 epsilon
Database Link:	NP_689407 Entrez Gene 27373 Mouse Entrez Gene 58822 Rat Entrez Gene 1454 Human
Synonyms:	CK1epsilon; HCKIE
Protein Families:	Druggable Genome, Protein Kinase
Protein Pathways:	Circadian rhythm - mammal, Hedgehog signaling pathway, Wnt signaling pathway

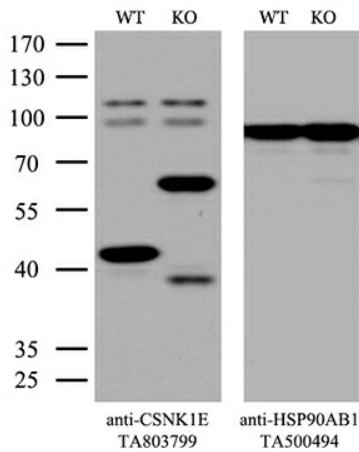


[View online »](#)

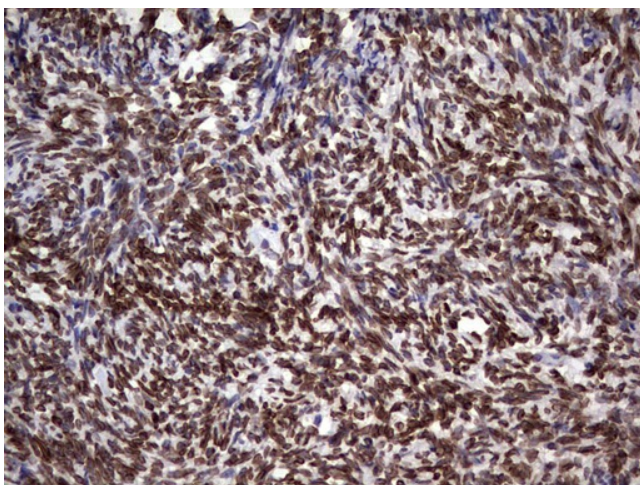
Product images:



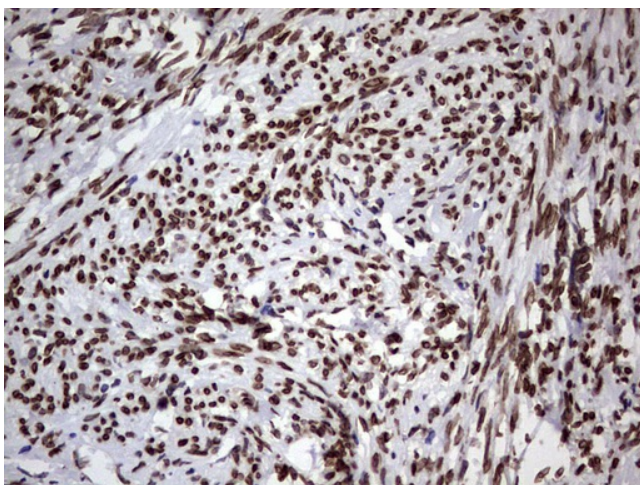
HEK293T cells were transfected with the pCMV6-ENTRY control (Cat# [PS100001], Left lane) or pCMV6-ENTRY CSNK1E (Cat# [RC202436], Right lane) cDNA for 48 hrs and lysed. Equivalent amounts of cell lysates (5 ug per lane) were separated by SDS-PAGE and immunoblotted with anti-CSNK1E(Cat# TA803799). Positive lysates [LY403455] (100ug) and [LC403455] (20ug) can be purchased separately from OriGene.



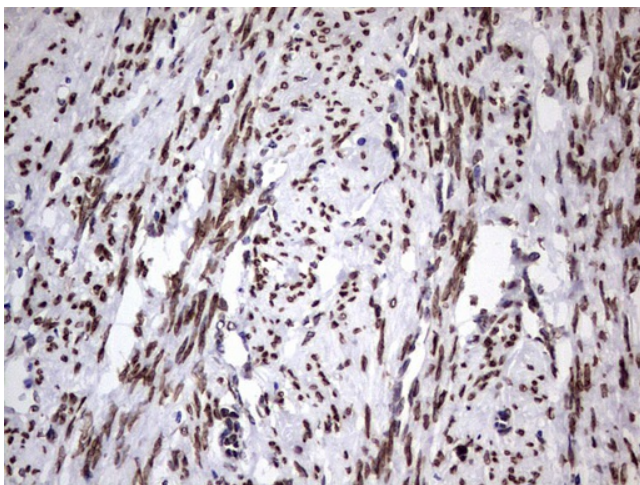
Equivalent amounts of cell lysates (10 ug per lane) of wild-type HeLa cells (WT, Cat# LC810HELA) and CSNK1E-Knockout HeLa cells (KO, Cat# [LC810054]) were separated by SDS-PAGE and immunoblotted with anti-CSNK1E monoclonal antibody TA803799. Then the blotted membrane was stripped and reprobed with anti-HSP90AB1 antibody ([TA500494]) as a loading control (1:500).



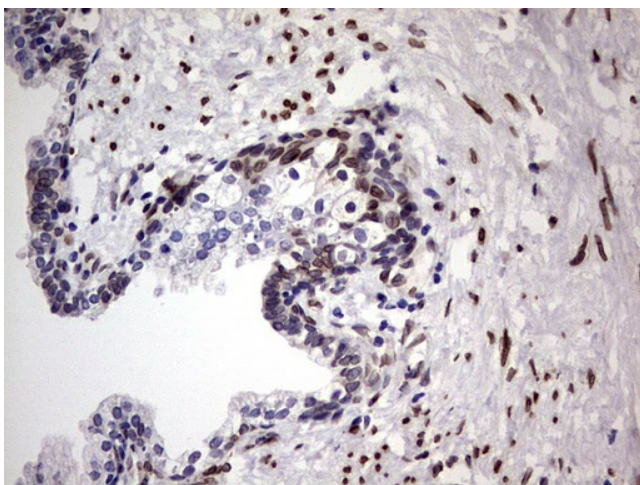
Immunohistochemical staining of paraffin-embedded Human Ovary tissue within the normal limits using anti-CSNK1E mouse monoclonal antibody. (Heat-induced epitope retrieval by 1 mM EDTA in 10mM Tris, pH8.5, 120°C for 3min, TA803799)



Immunohistochemical staining of paraffin-embedded Human endometrium tissue within the normal limits using anti-CSNK1E mouse monoclonal antibody. (Heat-induced epitope retrieval by 1 mM EDTA in 10mM Tris, pH8.5, 120°C for 3min, TA803799)



Immunohistochemical staining of paraffin-embedded Adenocarcinoma of Human endometrium tissue using anti-CSNK1E mouse monoclonal antibody. (Heat-induced epitope retrieval by 1 mM EDTA in 10mM Tris, pH8.5, 120°C for 3min, TA803799)



Immunohistochemical staining of paraffin-embedded Carcinoma of Human prostate tissue using anti-CSNK1E mouse monoclonal antibody. (Heat-induced epitope retrieval by 1 mM EDTA in 10mM Tris, pH8.5, 120°C for 3min, TA803799)