

## Product datasheet for **TA803797AM**

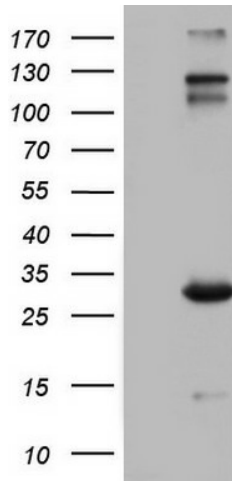
### IGSF11 Mouse Monoclonal Antibody (Biotin conjugated) [Clone ID: OTI2H1]

#### Product data:

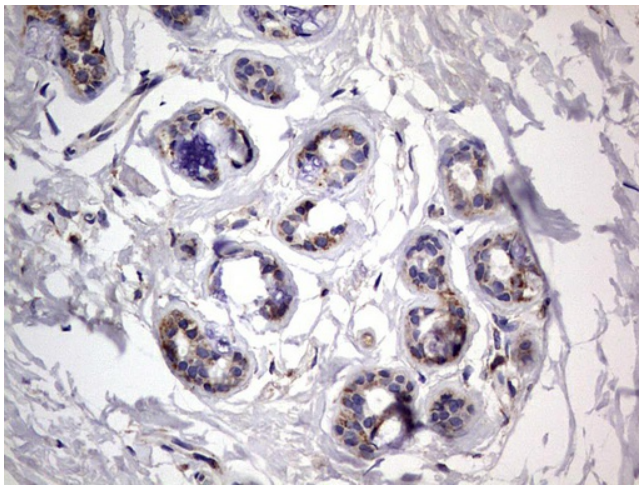
Product Type:	Primary Antibodies
Clone Name:	OTI2H1
Applications:	IHC, WB
Recommended Dilution:	WB 1:2000
Reactivity:	Human, Mouse, Rat
Host:	Mouse
Isotype:	IgG1
Clonality:	Monoclonal
Immunogen:	Human recombinant protein fragment corresponding to amino acids 23-241 of human IGSF11 (NP_689751) produced in E.coli.
Formulation:	PBS (pH 7.3) containing 1% BSA, 50% glycerol and 0.02% sodium azide.
Concentration:	0.5 mg/ml
Purification:	Purified from mouse ascites fluids or tissue culture supernatant by affinity chromatography (protein A/G)
Conjugation:	Biotin
Storage:	Store at -20°C as received.
Stability:	Stable for 12 months from date of receipt.
Gene Name:	immunoglobulin superfamily member 11
Database Link:	<a href="#">NP_689751</a> <a href="#">Entrez Gene 207683 Mouse</a> <a href="#">Entrez Gene 152404 Human</a> <a href="#">Q5DX21</a>
Background:	IGSF11 is an immunoglobulin (Ig) superfamily member that is preferentially expressed in brain and testis. It shares significant homology with coxsackievirus and adenovirus receptor (CXADR; MIM 602621) and endothelial cell-selective adhesion molecule (ESAM). [supplied by OMIM, Apr 2005]
Synonyms:	BT-IgSF; CT119; CXADRL1; Igsf13; VSIG3
Protein Families:	Transmembrane



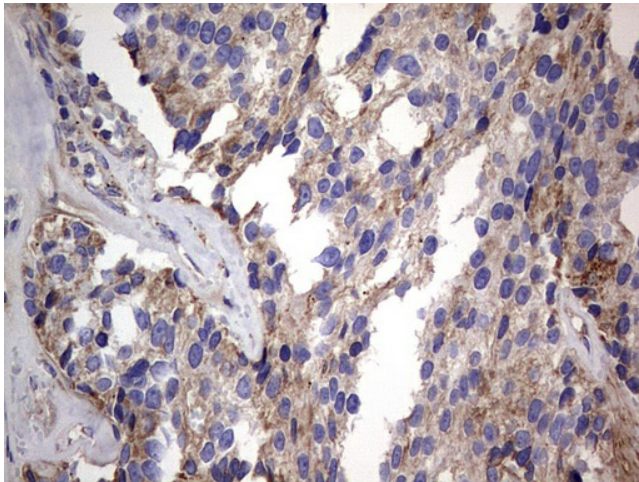
[View online »](#)

**Product images:**

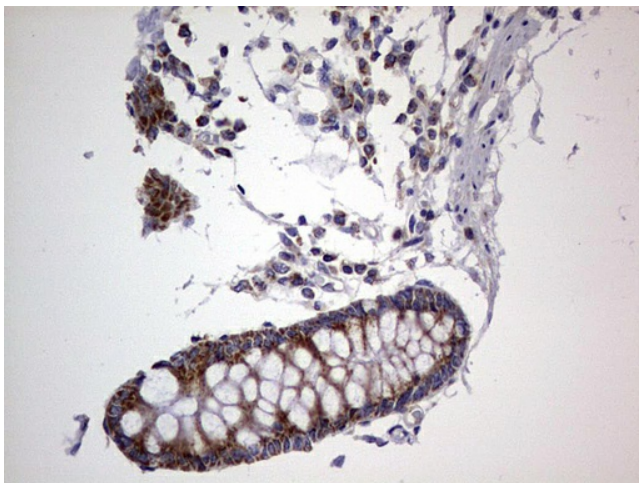
HEK293T cells were transfected with the pCMV6-ENTRY control (Cat# [PS100001], Left lane) or pCMV6-ENTRY IGSF11 (Cat# [RC206735], Right lane) cDNA for 48 hrs and lysed. Equivalent amounts of cell lysates (5 ug per lane) were separated by SDS-PAGE and immunoblotted with anti-IGSF11 (Cat# [TA803797]). Positive lysates [LY407451] (100ug) and [LC407451] (20ug) can be purchased separately from OriGene.



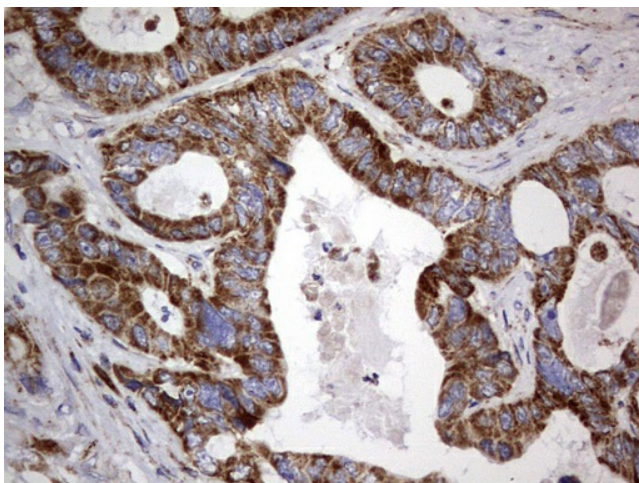
Immunohistochemical staining of paraffin-embedded Human breast tissue within the normal limits using anti-IGSF11 mouse monoclonal antibody. ([TA803797]) Dilution: 1:150



Immunohistochemical staining of paraffin-embedded Adenocarcinoma of Human breast tissue using anti-IGSF11 mouse monoclonal antibody. ([TA803797]) Dilution: 1:150

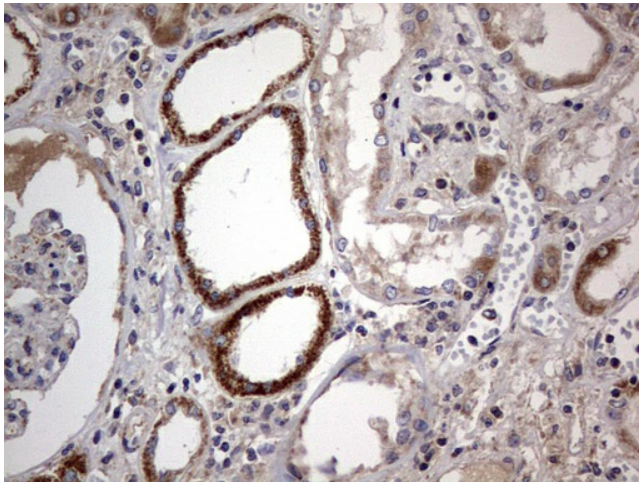


Immunohistochemical staining of paraffin-embedded Human colon tissue within the normal limits using anti-IGSF11 mouse monoclonal antibody. ([TA803797]) Dilution: 1:150

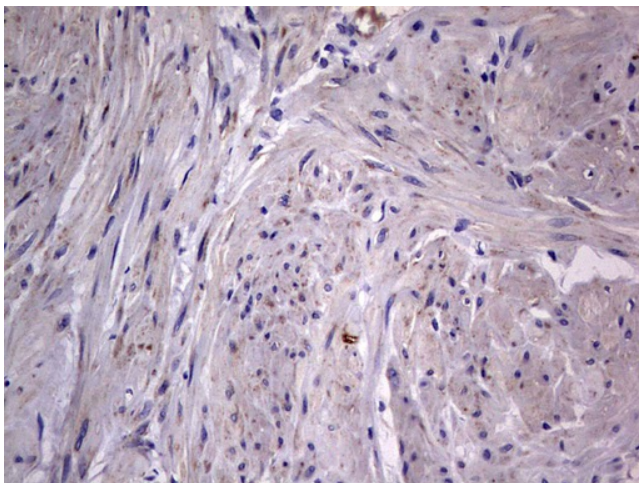


Immunohistochemical staining of paraffin-embedded Adenocarcinoma of Human colon tissue using anti-IGSF11 mouse monoclonal antibody. ([TA803797]) Dilution: 1:150

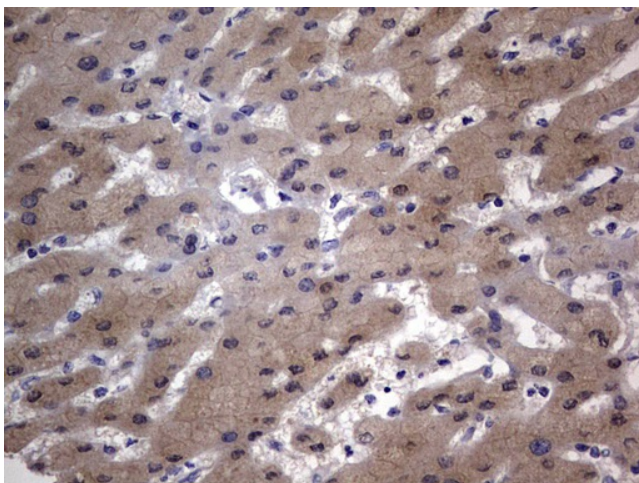




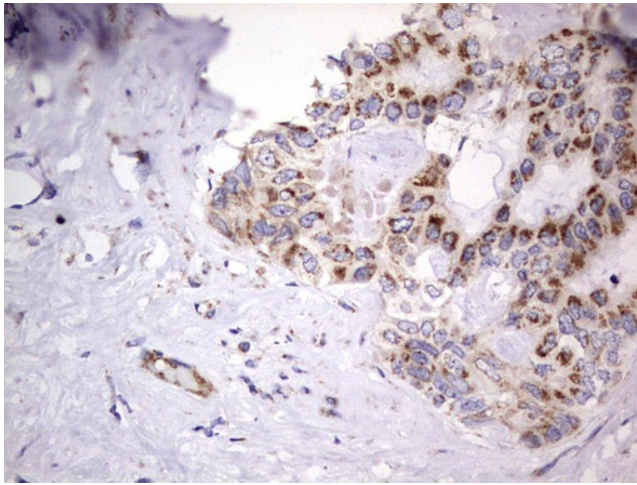
Immunohistochemical staining of paraffin-embedded Human Kidney tissue within the normal limits using anti-IGSF11 mouse monoclonal antibody. ([TA803797]) Dilution: 1:150



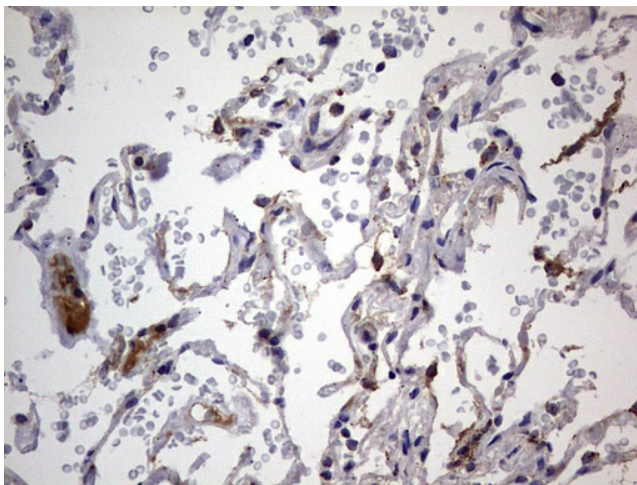
Immunohistochemical staining of paraffin-embedded Carcinoma of Human kidney tissue using anti-IGSF11 mouse monoclonal antibody. ([TA803797]) Dilution: 1:150



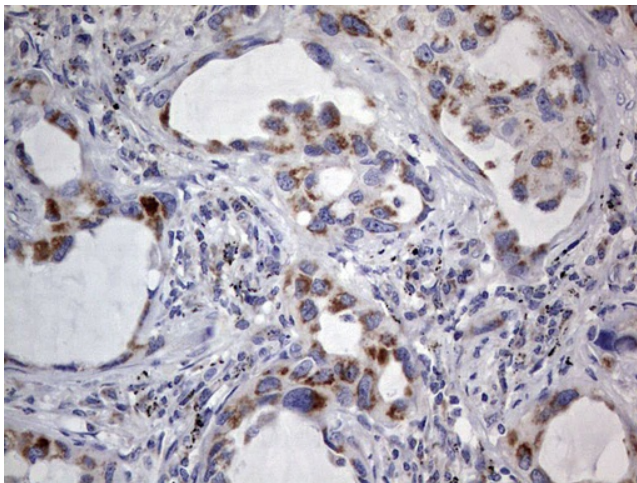
Immunohistochemical staining of paraffin-embedded Human liver tissue within the normal limits using anti-IGSF11 mouse monoclonal antibody. ([TA803797]) Dilution: 1:150



Immunohistochemical staining of paraffin-embedded Carcinoma of Human liver tissue using anti-IGSF11 mouse monoclonal antibody. ([TA803797]) Dilution: 1:150

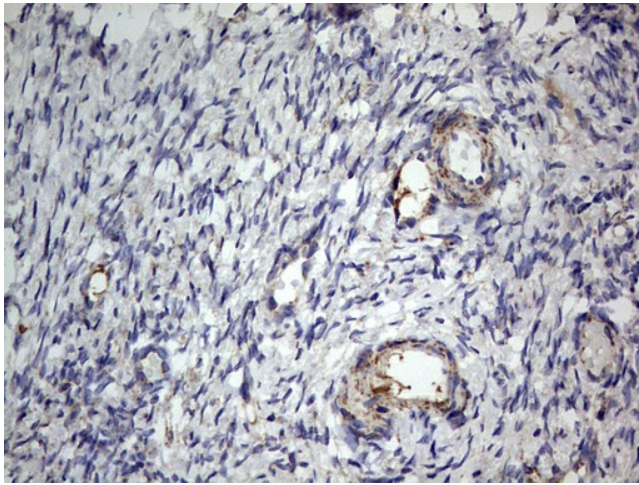


Immunohistochemical staining of paraffin-embedded Human lung tissue within the normal limits using anti-IGSF11 mouse monoclonal antibody. ([TA803797]) Dilution: 1:150

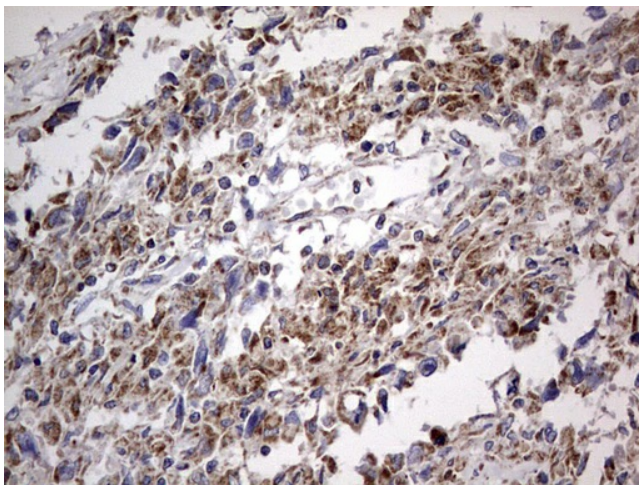


Immunohistochemical staining of paraffin-embedded Carcinoma of Human lung tissue using anti-IGSF11 mouse monoclonal antibody. ([TA803797]) Dilution: 1:150

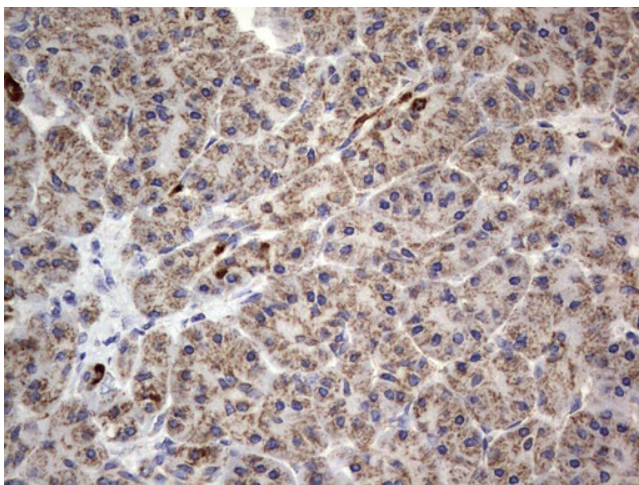




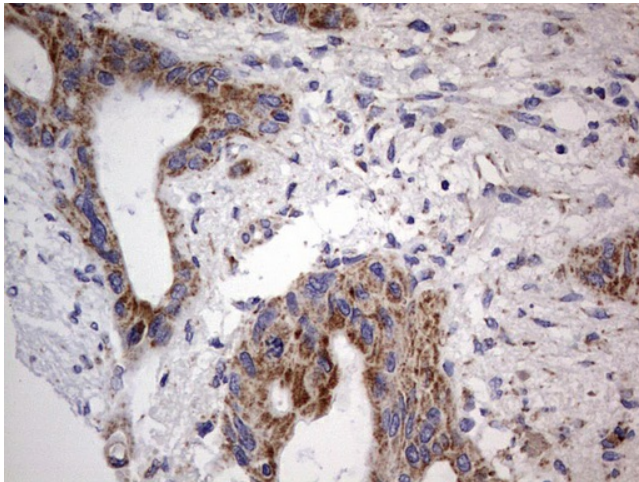
Immunohistochemical staining of paraffin-embedded Human Ovary tissue within the normal limits using anti-IGSF11 mouse monoclonal antibody. ([TA803797]) Dilution: 1:150



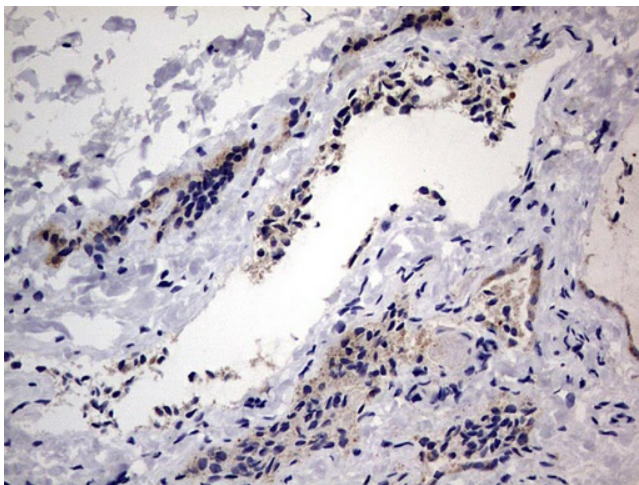
Immunohistochemical staining of paraffin-embedded Adenocarcinoma of Human ovary tissue using anti-IGSF11 mouse monoclonal antibody. ([TA803797]) Dilution: 1:150



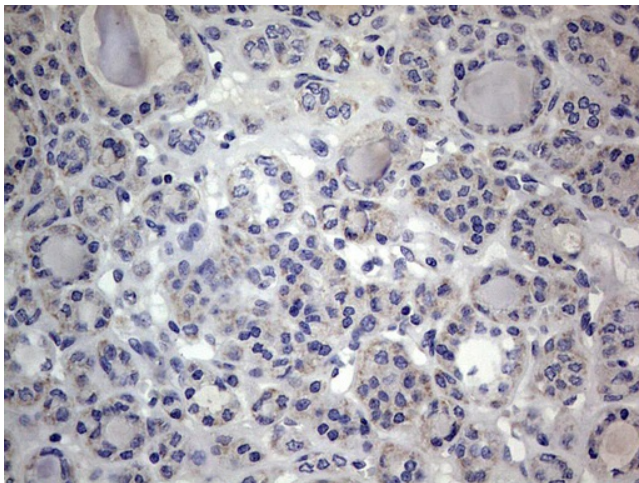
Immunohistochemical staining of paraffin-embedded Human pancreas tissue within the normal limits using anti-IGSF11 mouse monoclonal antibody. ([TA803797]) Dilution: 1:150



Immunohistochemical staining of paraffin-embedded Carcinoma of Human pancreas tissue using anti-IGSF11 mouse monoclonal antibody. ([TA803797]) Dilution: 1:150

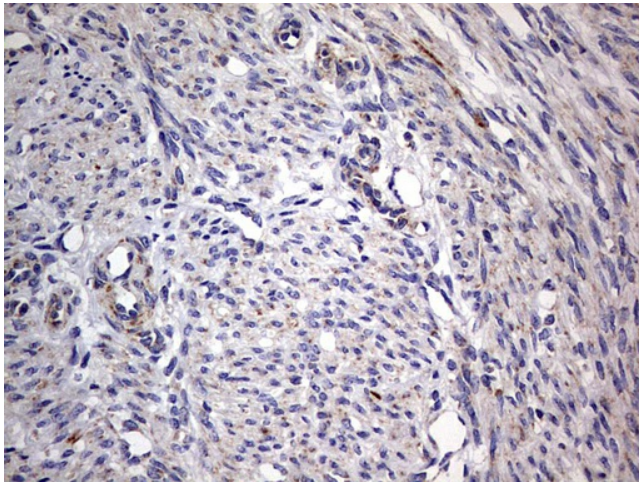


Immunohistochemical staining of paraffin-embedded Human thyroid tissue within the normal limits using anti-IGSF11 mouse monoclonal antibody. ([TA803797]) Dilution: 1:150

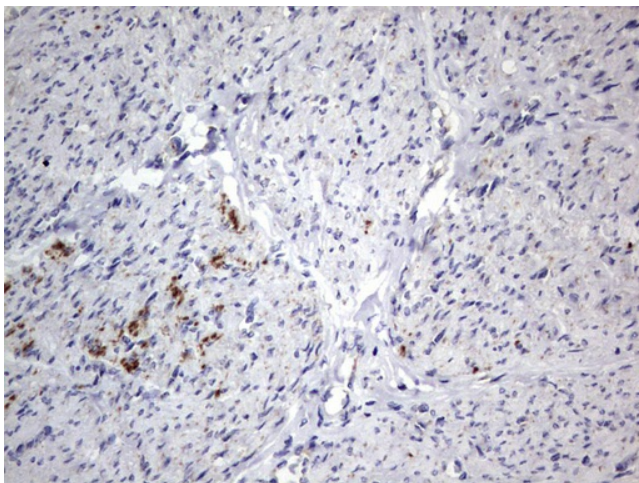


Immunohistochemical staining of paraffin-embedded Carcinoma of Human thyroid tissue using anti-IGSF11 mouse monoclonal antibody. ([TA803797]) Dilution: 1:150

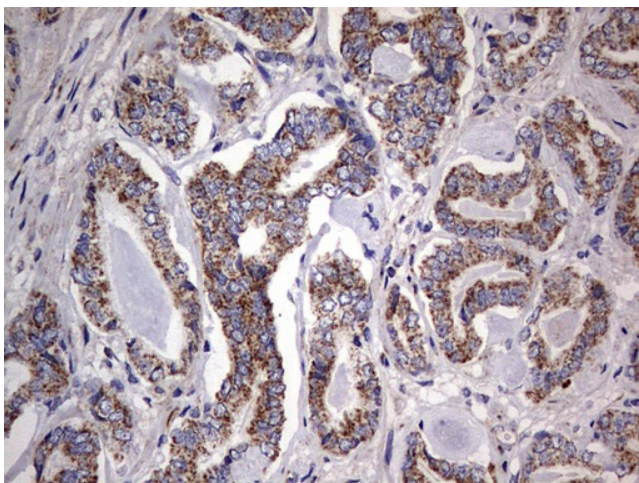




Immunohistochemical staining of paraffin-embedded Human endometrium tissue within the normal limits using anti-IGSF11 mouse monoclonal antibody. ([TA803797]) Dilution: 1:150

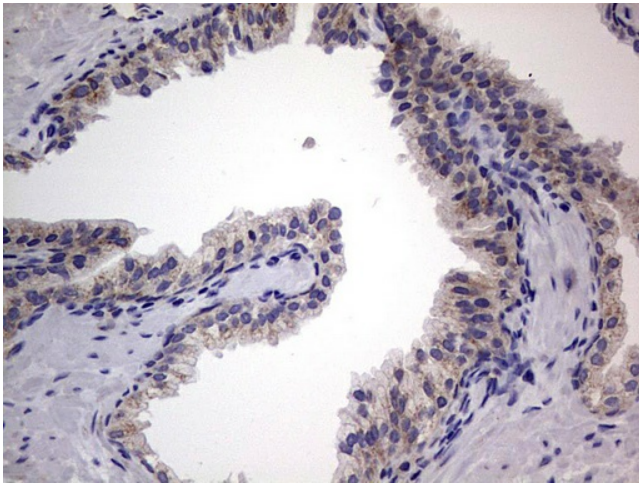


Immunohistochemical staining of paraffin-embedded Adenocarcinoma of Human endometrium tissue using anti-IGSF11 mouse monoclonal antibody. ([TA803797]) Dilution: 1:150

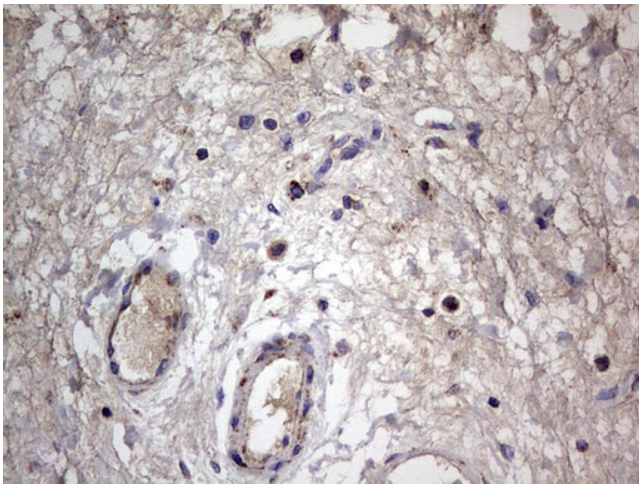


Immunohistochemical staining of paraffin-embedded Human prostate tissue within the normal limits using anti-IGSF11 mouse monoclonal antibody. ([TA803797]) Dilution: 1:150

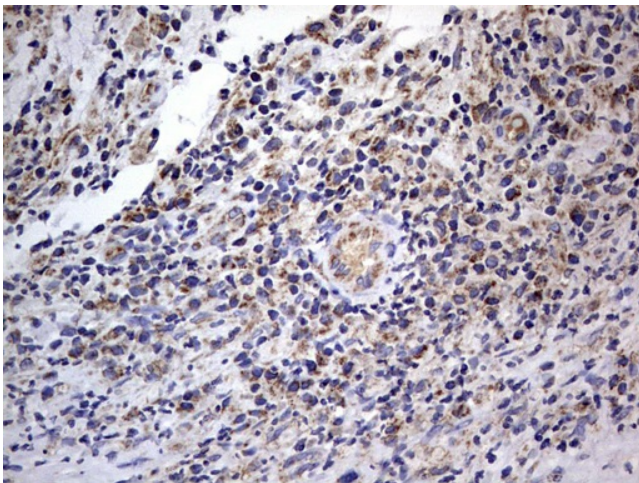




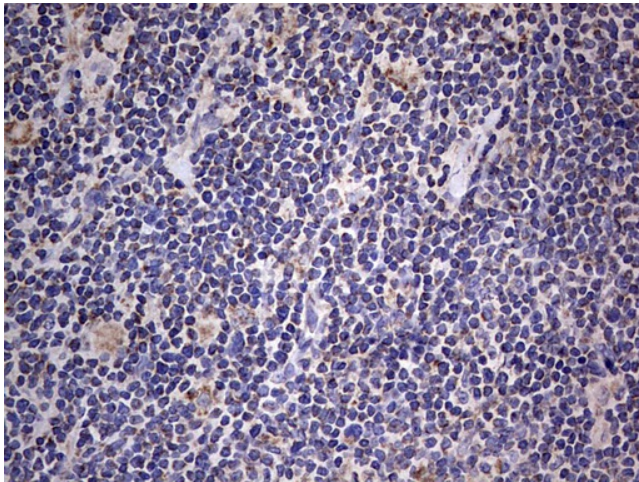
Immunohistochemical staining of paraffin-embedded Carcinoma of Human prostate tissue using anti-IGSF11 mouse monoclonal antibody. ([TA803797]) Dilution: 1:150



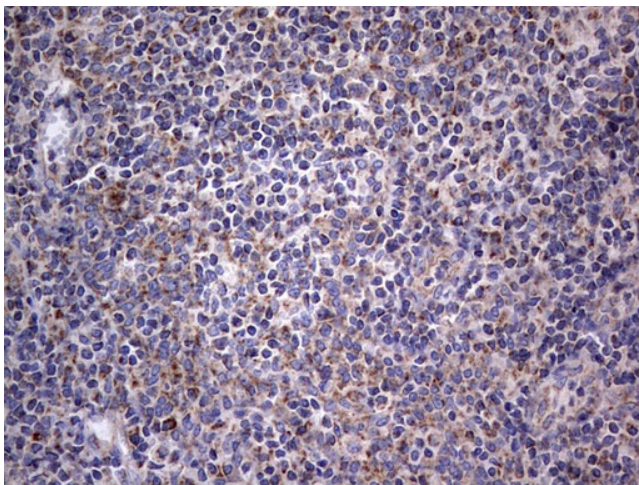
Immunohistochemical staining of paraffin-embedded Human bladder tissue within the normal limits using anti-IGSF11 mouse monoclonal antibody. ([TA803797]) Dilution: 1:150



Immunohistochemical staining of paraffin-embedded Human lymph node tissue within the normal limits using anti-IGSF11 mouse monoclonal antibody. ([TA803797]) Dilution: 1:150



Immunohistochemical staining of paraffin-embedded Human lymphoma tissue using anti-IGSF11 mouse monoclonal antibody. ([TA803797]) Dilution: 1:150



Immunohistochemical staining of paraffin-embedded Human tonsil within the normal limits using anti-IGSF11 mouse monoclonal antibody. ([TA803797]) Dilution: 1:150