

## Product datasheet for **TA803762AM**

### IGSF11 Mouse Monoclonal Antibody (Biotin conjugated) [Clone ID: OTI3D2]

#### Product data:

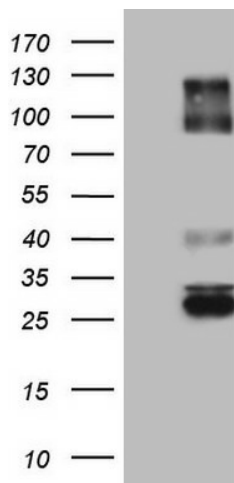
Product Type:	Primary Antibodies
Clone Name:	OTI3D2
Applications:	WB
Recommended Dilution:	WB 1:2000
Reactivity:	Human, Mouse, Rat
Host:	Mouse
Isotype:	IgG2a
Clonality:	Monoclonal
Immunogen:	Human recombinant protein fragment corresponding to amino acids 23-241 of human IGSF11 (NP_689751) produced in E.coli.
Formulation:	PBS (pH 7.3) containing 1% BSA, 50% glycerol and 0.02% sodium azide.
Concentration:	0.5 mg/ml
Purification:	Purified from mouse ascites fluids or tissue culture supernatant by affinity chromatography (protein A/G)
Conjugation:	Biotin
Storage:	Store at -20°C as received.
Stability:	Stable for 12 months from date of receipt.
Predicted Protein Size:	46.1 kDa
Gene Name:	immunoglobulin superfamily member 11
Database Link:	<a href="#">NP_689751</a> <a href="#">Entrez Gene 207683 Mouse</a> <a href="#">Entrez Gene 152404 Human</a> <a href="#">Q5DX21</a>
Background:	IGSF11 is an immunoglobulin (Ig) superfamily member that is preferentially expressed in brain and testis. It shares significant homology with coxsackievirus and adenovirus receptor (CXADR; MIM 602621) and endothelial cell-selective adhesion molecule (ESAM). [supplied by OMIM, Apr 2005]
Synonyms:	BT-IgSF; CT119; CXADRL1; Igsf13; VSIG3



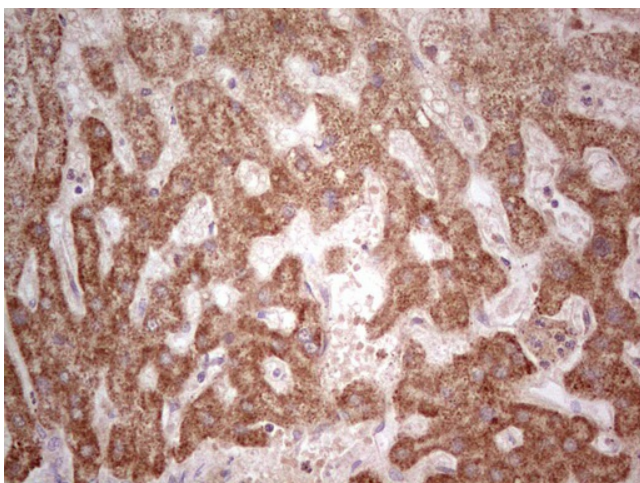
[View online »](#)

Protein Families: Transmembrane

### Product images:



Human recombinant protein fragment corresponding to amino acids 23-241 of human IGSF11 (NP\_689751) produced in E.coli.



Immunohistochemical staining of paraffin-embedded Human liver tissue within the normal limits using anti-IGSF11 mouse monoclonal antibody. (Heat-induced epitope retrieval by 1mM EDTA in 10mM Tris, pH8.5, 120°C for 3min, [TA803762])