

Product datasheet for **TA803729**

IGSF11 Mouse Monoclonal Antibody [Clone ID: OTI2A5]

Product data:

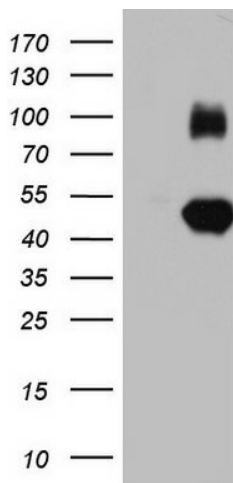
Product Type:	Primary Antibodies
Clone Name:	OTI2A5
Applications:	WB
Recommended Dilution:	WB 1:2000
Reactivity:	Human, Mouse, Rat
Host:	Mouse
Isotype:	IgG1
Clonality:	Monoclonal
Immunogen:	Human recombinant protein fragment corresponding to amino acids 23-241 of human IGSF11 (NP_689751) produced in E.coli.
Formulation:	PBS (pH 7.3) containing 1% BSA, 50% glycerol and 0.02% sodium azide.
Concentration:	1 mg/ml
Purification:	Purified from mouse ascites fluids or tissue culture supernatant by affinity chromatography (protein A/G)
Conjugation:	Unconjugated
Storage:	Store at -20°C as received.
Stability:	Stable for 12 months from date of receipt.
Predicted Protein Size:	46.1 kDa
Gene Name:	immunoglobulin superfamily member 11
Database Link:	NP_689751 Entrez Gene 207683 Mouse Entrez Gene 152404 Human Q5DX21
Background:	IGSF11 is an immunoglobulin (Ig) superfamily member that is preferentially expressed in brain and testis. It shares significant homology with coxsackievirus and adenovirus receptor (CXADR; MIM 602621) and endothelial cell-selective adhesion molecule (ESAM). [supplied by OMIM, Apr 2005]
Synonyms:	BT-IgSF; CT119; CXADRL1; Igsf13; VSIG3



[View online »](#)

Protein Families: Transmembrane

Product images:



HEK293T cells were transfected with the pCMV6-ENTRY control (Left lane) or pCMV6-ENTRY IGSF11 ([RC206735], Right lane) cDNA for 48 hrs and lysed. Equivalent amounts of cell lysates (5 ug per lane) were separated by SDS-PAGE and immunoblotted with anti-IGSF11. Positive lysates [LY407451] (100ug) and [LC407451] (20ug) can be purchased separately from OriGene.