

Product datasheet for **TA803691**

Lamin B2 (LMNB2) Mouse Monoclonal Antibody [Clone ID: OTI2C6]

Product data:

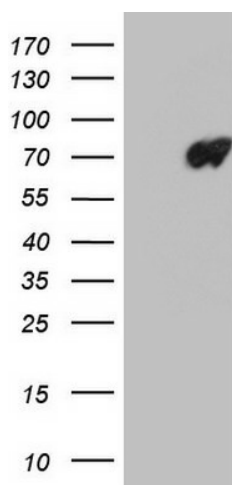
Product Type:	Primary Antibodies
Clone Name:	OTI2C6
Applications:	WB
Recommended Dilution:	WB 1:2000
Reactivity:	Human
Host:	Mouse
Isotype:	IgG1
Clonality:	Monoclonal
Immunogen:	Full length human recombinant protein of human LMNB2 (NP_116126) produced in HEK293T cell.
Formulation:	PBS (pH 7.3) containing 1% BSA, 50% glycerol and 0.02% sodium azide.
Concentration:	1 mg/ml
Purification:	Purified from mouse ascites fluids or tissue culture supernatant by affinity chromatography (protein A/G)
Conjugation:	Unconjugated
Storage:	Store at -20°C as received.
Stability:	Stable for 12 months from date of receipt.
Gene Name:	lamin B2
Database Link:	NP_116126 Entrez Gene 84823 Human Q03252
Background:	This gene encodes a B type nuclear lamin. The nuclear lamina consists of a two-dimensional matrix of proteins located next to the inner nuclear membrane. The lamin family of proteins make up the matrix and are highly conserved in evolution. During mitosis, the lamina matrix is reversibly disassembled as the lamin proteins are phosphorylated. Lamin proteins are thought to be involved in nuclear stability, chromatin structure and gene expression. Vertebrate lamins consist of two types, A and B. Mutations in this gene are associated with acquired partial lipodystrophy. [provided by RefSeq, May 2012]



[View online »](#)

Synonyms: EPM9; LAMB2; LMN2; MCPH27

Product images:



HEK293T cells were transfected with the pCMV6-ENTRY control (Cat# [PS100001], Left lane) or pCMV6-ENTRY LMNB2 (Cat# [RC200807], Right lane) cDNA for 48 hrs and lysed. Equivalent amounts of cell lysates (5 ug per lane) were separated by SDS-PAGE and immunoblotted with anti-LMNB2(Cat# TA803691). Positive lysates [LY409970] (100ug) and [LC409970] (20ug) can be purchased separately from OriGene.