

Product datasheet for **TA803665AM**

MDA5 (IFIH1) Mouse Monoclonal Antibody (Biotin conjugated) [Clone ID: OTI1C7]

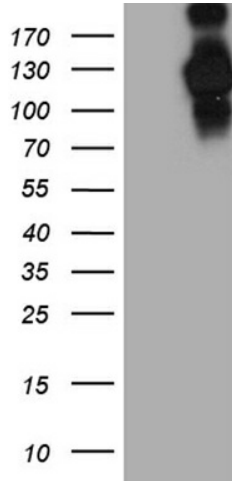
Product data:

Product Type:	Primary Antibodies
Clone Name:	OTI1C7
Applications:	WB
Recommended Dilution:	WB 1:500~2000
Reactivity:	Human
Host:	Mouse
Isotype:	IgG2a
Clonality:	Monoclonal
Immunogen:	Full length human recombinant protein of human IFIH1 (NP_071451) produced in HEK293T cell.
Formulation:	PBS (pH 7.3) containing 1% BSA, 50% glycerol and 0.02% sodium azide.
Concentration:	0.5 mg/ml
Purification:	Purified from mouse ascites fluids or tissue culture supernatant by affinity chromatography (protein A/G)
Conjugation:	Biotin
Storage:	Store at -20°C as received.
Stability:	Stable for 12 months from date of receipt.
Predicted Protein Size:	116.5 kDa
Gene Name:	interferon induced with helicase C domain 1
Database Link:	NP_071451 Entrez Gene 64135 Human Q9BYX4
Synonyms:	AGS7; Hlcd; IDDM19; MDA-5; MDA5; RLR-2
Protein Pathways:	RIG-I-like receptor signaling pathway

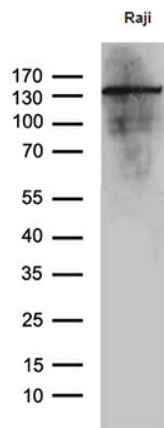


[View online »](#)

Product images:



HEK293T cells were transfected with the pCMV6-ENTRY control (Left lane) or pCMV6-ENTRY IFIH1 ([RC215661], Right lane) cDNA for 48 hrs and lysed. Equivalent amounts of cell lysates (5 ug per lane) were separated by SDS-PAGE and immunoblotted with anti-IFIH1 (1:2000). Positive lysates [LY411723] (100ug) and [LC411723] (20ug) can be purchased separately from OriGene.



Western blot analysis of extracts (35ug) from RAJI cell line by using anti-IFIH1 monoclonal antibody (1:500).