

Product datasheet for TA803645M

Cytochrome C (CYCS) Mouse Monoclonal Antibody [Clone ID: OTI2F2]

Product data:

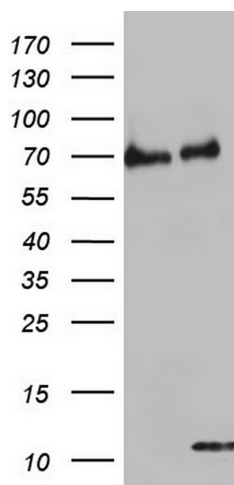
Product Type:	Primary Antibodies
Clone Name:	OTI2F2
Applications:	WB
Recommended Dilution:	WB 1:500
Reactivity:	Human, Mouse, Rat
Host:	Mouse
Isotype:	IgG1
Clonality:	Monoclonal
Immunogen:	Full length human recombinant protein of human CYCS (NP_061820) produced in E.coli.
Formulation:	PBS (pH 7.3) containing 1% BSA, 50% glycerol and 0.02% sodium azide.
Concentration:	1 mg/ml
Purification:	Purified from mouse ascites fluids or tissue culture supernatant by affinity chromatography (protein A/G)
Conjugation:	Unconjugated
Storage:	Store at -20°C as received.
Stability:	Stable for 12 months from date of receipt.
Predicted Protein Size:	11.6 kDa
Gene Name:	cytochrome c, somatic
Database Link:	NP_061820 Entrez Gene 13063 Mouse Entrez Gene 25309 Rat Entrez Gene 54205 Human P99999

Background: This gene encodes a small heme protein that functions as a central component of the electron transport chain in mitochondria. The encoded protein associates with the inner membrane of the mitochondrion where it accepts electrons from cytochrome b and transfers them to the cytochrome oxidase complex. This protein is also involved in initiation of apoptosis. Mutations in this gene are associated with autosomal dominant nonsyndromic thrombocytopenia. Numerous processed pseudogenes of this gene are found throughout the human genome. [provided by RefSeq, Jul 2010]


[View online »](#)

Synonyms:	CYC; HCS; THC4
Protein Families:	Druggable Genome
Protein Pathways:	Alzheimer's disease, Amyotrophic lateral sclerosis (ALS), Apoptosis, Colorectal cancer, Huntington's disease, p53 signaling pathway, Parkinson's disease, Pathways in cancer, Small cell lung cancer, Viral myocarditis

Product images:



HEK293T cells were transfected with the pCMV6-ENTRY control (Cat# [PS100001], Left lane) or pCMV6-ENTRY CYCS (Cat# [RC209724], Right lane) cDNA for 48 hrs and lysed. Equivalent amounts of cell lysates (5 ug per lane) were separated by SDS-PAGE and immunoblotted with anti-CYCS (Cat# [TA803645]). Positive lysates [LY402715] (100ug) and [LC402715] (20ug) can be purchased separately from OriGene.