

## Product datasheet for TA803637M

### PPIH Mouse Monoclonal Antibody [Clone ID: OTI2D11]

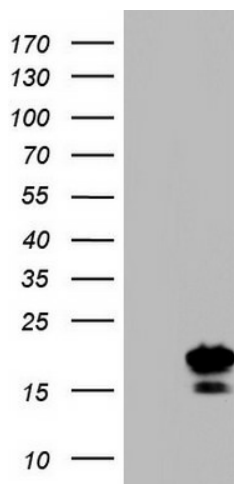
#### Product data:

Product Type:	Primary Antibodies
Clone Name:	OTI2D11
Applications:	WB
Recommended Dilution:	WB 1:2000
Reactivity:	Human, Mouse, Rat
Host:	Mouse
Isotype:	IgG2b
Clonality:	Monoclonal
Immunogen:	Full length human recombinant protein of human PPIH (NP_006338) produced in E.coli.
Formulation:	PBS (pH 7.3) containing 1% BSA, 50% glycerol and 0.02% sodium azide.
Concentration:	1 mg/ml
Purification:	Purified from mouse ascites fluids or tissue culture supernatant by affinity chromatography (protein A/G)
Conjugation:	Unconjugated
Storage:	Store at -20°C as received.
Stability:	Stable for 12 months from date of receipt.
Gene Name:	peptidylprolyl isomerase H
Database Link:	<a href="#">NP_006338</a> <a href="#">Entrez Gene 66101 Mouse</a> <a href="#">Entrez Gene 366461 Rat</a> <a href="#">Entrez Gene 10465 Human</a> <a href="#">O43447</a>
Background:	The protein encoded by this gene is a member of the peptidyl-prolyl cis-trans isomerase (PPIase) family. PPIases catalyze the cis-trans isomerization of proline imidic peptide bonds in oligopeptides and accelerate the folding of proteins. This protein is a specific component of the complex that includes pre-mRNA processing factors PRPF3, PRPF4, and PRPF18, as well as U4/U5/U6 tri-snRNP. This protein has been shown to possess PPIase activity and may act as a protein chaperone that mediates the interactions between different proteins inside the spliceosome. [provided by RefSeq, Jul 2008]
Synonyms:	CYP-20; CYPH; SnuCyp-20; USA-CYP

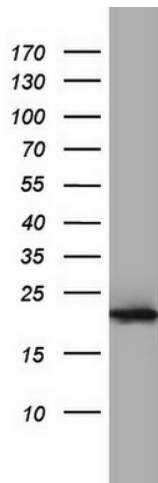

[View online »](#)

Protein Pathways: Spliceosome

### Product images:



HEK293T cells were transfected with the pCMV6-ENTRY control (Left lane) or pCMV6-ENTRY PPIH ([RC201529], Right lane) cDNA for 48 hrs and lysed. Equivalent amounts of cell lysates (5 ug per lane) were separated by SDS-PAGE and immunoblotted with anti-PPIH. Positive lysates [LY416702] (100ug) and [LC416702] (20ug) can be purchased separately from OriGene.



Western blot analysis of A549 cell lysate (35ug) by using anti-PPIH monoclonal antibody. Dilution: 1:500