

## Product datasheet for **TA803635**

### PDE1A Mouse Monoclonal Antibody [Clone ID: OTI5H4]

#### Product data:

Product Type:	Primary Antibodies
Clone Name:	OTI5H4
Applications:	WB
Recommended Dilution:	WB 1:2000
Reactivity:	Human, Mouse, Rat
Host:	Mouse
Isotype:	IgG2b
Clonality:	Monoclonal
Immunogen:	Human recombinant protein fragment corresponding to amino acids 259-545 of human PDE1A (NP_005010) produced in E.coli.
Formulation:	PBS (pH 7.3) containing 1% BSA, 50% glycerol and 0.02% sodium azide.
Concentration:	1 mg/ml
Purification:	Purified from mouse ascites fluids or tissue culture supernatant by affinity chromatography (protein A/G)
Conjugation:	Unconjugated
Storage:	Store at -20°C as received.
Stability:	Stable for 12 months from date of receipt.
Gene Name:	phosphodiesterase 1A
Database Link:	<a href="#">NP_005010</a> <a href="#">Entrez Gene 18573 Mouse</a> <a href="#">Entrez Gene 81529 Rat</a> <a href="#">Entrez Gene 5136 Human</a> <a href="#">P54750</a>
Background:	Cyclic nucleotide phosphodiesterases (PDEs) play a role in signal transduction by regulating intracellular cyclic nucleotide concentrations through hydrolysis of cAMP and/or cGMP to their respective nucleoside 5-prime monophosphates. Members of the PDE1 family, such as PDE1A, are Ca(2+)/calmodulin (see CALM1; MIM 114180)-dependent PDEs (CaM-PDEs) that are activated by calmodulin in the presence of Ca(2+) (Michibata et al., 2001 [PubMed 11342109]; Fidock et al., 2002 [PubMed 11747989]). [supplied by OMIM, Oct 2009]
Synonyms:	CAM-PDE-1A; HCAM-1; HCAM1; HSPDE1A

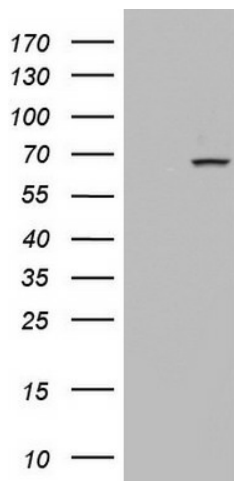


[View online »](#)

**Protein Families:** Druggable Genome

**Protein Pathways:** Calcium signaling pathway, Progesterone-mediated oocyte maturation, Purine metabolism, Taste transduction

**Product images:**



HEK293T cells were transfected with the pCMV6-ENTRY control (Left lane) or pCMV6-ENTRY PDE1A ([RC205292], Right lane) cDNA for 48 hrs and lysed. Equivalent amounts of cell lysates (5 ug per lane) were separated by SDS-PAGE and immunoblotted with anti-PDE1A. Positive lysates [LY401556] (100ug) and [LC401556] (20ug) can be purchased separately from OriGene.