

Product datasheet for **TA803633M**

UBE2D1 Mouse Monoclonal Antibody [Clone ID: OTI1E7]

Product data:

Product Type:	Primary Antibodies
Clone Name:	OTI1E7
Applications:	WB
Recommended Dilution:	WB 1:2000
Reactivity:	Human, Mouse, Rat
Host:	Mouse
Isotype:	IgG1
Clonality:	Monoclonal
Immunogen:	Full length human recombinant protein of human UBE2D1 (NP_003329) produced in E.coli.
Formulation:	PBS (pH 7.3) containing 1% BSA, 50% glycerol and 0.02% sodium azide.
Concentration:	1 mg/ml
Purification:	Purified from mouse ascites fluids or tissue culture supernatant by affinity chromatography (protein A/G)
Conjugation:	Unconjugated
Storage:	Store at -20°C as received.
Stability:	Stable for 12 months from date of receipt.
Gene Name:	ubiquitin conjugating enzyme E2 D1
Database Link:	NP_003329 Entrez Gene 216080 Mouse Entrez Gene 361831 Rat Entrez Gene 7321 Human P51668

[View online »](#)

Background:

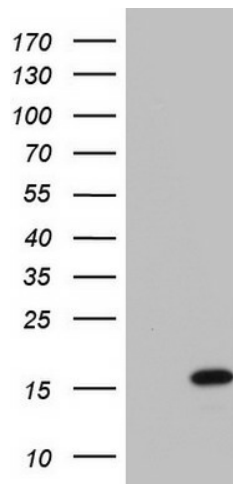
The modification of proteins with ubiquitin is an important cellular mechanism for targeting abnormal or short-lived proteins for degradation. Ubiquitination involves at least three classes of enzymes: ubiquitin-activating enzymes, or E1s, ubiquitin-conjugating enzymes, or E2s, and ubiquitin-protein ligases, or E3s. This gene encodes a member of the E2 ubiquitin-conjugating enzyme family. This enzyme is closely related to a stimulator of iron transport (SFT), and is up-regulated in hereditary hemochromatosis. It also functions in the ubiquitination of the tumor-suppressor protein p53 and the hypoxia-inducible transcription factor HIF1alpha by interacting with the E1 ubiquitin-activating enzyme and the E3 ubiquitin-protein ligases. Two transcript variants encoding different isoforms have been found for this gene. [provided by RefSeq, Mar 2011]

Synonyms:

E2(17)KB1; SFT; UBC4/5; UBCH5; UBCH5A

Protein Pathways:

Ubiquitin mediated proteolysis

Product images:


HEK293T cells were transfected with the pCMV6-ENTRY control (Cat# [PS100001], Left lane) or pCMV6-ENTRY UBE2D1 (Cat# [RC205621], Right lane) cDNA for 48 hrs and lysed. Equivalent amounts of cell lysates (5 ug per lane) were separated by SDS-PAGE and immunoblotted with anti-UBE2D1 (Cat# [TA803633]). Positive lysates [LY418756] (100ug) and [LC418756] (20ug) can be purchased separately from OriGene.