

## Product datasheet for **TA803616AM**

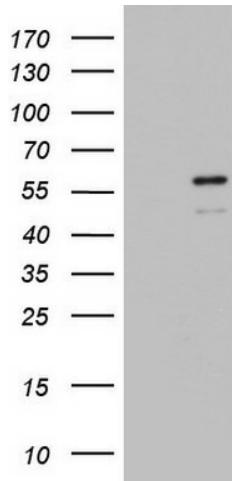
### ZBTB37 Mouse Monoclonal Antibody (Biotin conjugated) [Clone ID: OTI1D7]

#### Product data:

Product Type:	Primary Antibodies
Clone Name:	OTI1D7
Applications:	WB
Recommended Dilution:	WB 1:500
Reactivity:	Human, Mouse, Rat
Host:	Mouse
Isotype:	IgG2b
Clonality:	Monoclonal
Immunogen:	Human recombinant protein fragment corresponding to amino acids 131-361 of human ZBTB37 (NP_115911) produced in E.coli.
Formulation:	PBS (pH 7.3) containing 1% BSA, 50% glycerol and 0.02% sodium azide.
Concentration:	0.5 mg/ml
Purification:	Purified from mouse ascites fluids or tissue culture supernatant by affinity chromatography (protein A/G)
Conjugation:	Biotin
Storage:	Store at -20°C as received.
Stability:	Stable for 12 months from date of receipt.
Gene Name:	zinc finger and BTB domain containing 37
Database Link:	<a href="#">NP_115911</a> <a href="#">Entrez Gene 84614 Human</a> <a href="#">Q5TC79</a>
Synonyms:	D430004I08Rik; ZNF908
Protein Families:	Transcription Factors



[View online »](#)

**Product images:**

HEK293T cells were transfected with the pCMV6-ENTRY control (Cat# [PS100001], Left lane) or pCMV6-ENTRY ZBTB37 (Cat# [RC200839], Right lane) cDNA for 48 hrs and lysed. Equivalent amounts of cell lysates (5 ug per lane) were separated by SDS-PAGE and immunoblotted with anti-ZBTB37(Cat# [TA803616]). Positive lysates [LY410053] (100ug) and [LC410053] (20ug) can be purchased separately from OriGene.