

Product datasheet for **TA803593S**

Von Willebrand Factor (VWF) Mouse Monoclonal Antibody [Clone ID: OTI7G3]

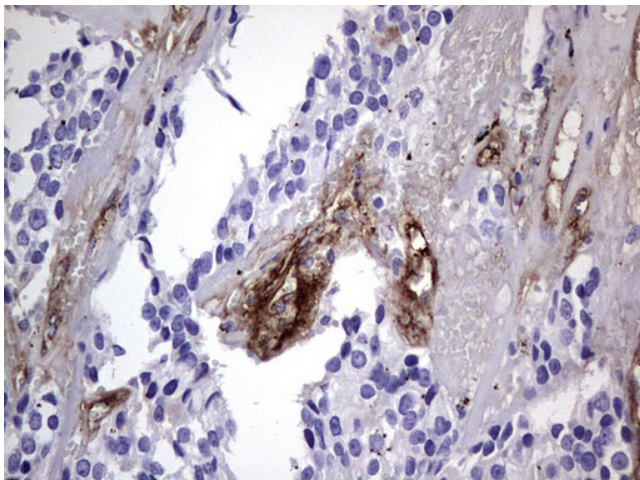
Product data:

Product Type:	Primary Antibodies
Clone Name:	OTI7G3
Applications:	IHC
Recommended Dilution:	IHC 1:150
Reactivity:	Human
Host:	Mouse
Isotype:	IgG1
Clonality:	Monoclonal
Immunogen:	Human recombinant protein fragment corresponding to amino acids 764-1263 of human VWF (NP_000543) produced in SF9 cell.
Formulation:	PBS (pH 7.3) containing 1% BSA, 50% glycerol and 0.02% sodium azide.
Concentration:	1 mg/ml
Purification:	Purified from mouse ascites fluids or tissue culture supernatant by affinity chromatography (protein A/G)
Conjugation:	Unconjugated
Storage:	Store at -20°C as received.
Stability:	Stable for 12 months from date of receipt.
Predicted Protein Size:	309.3 kDa
Gene Name:	von Willebrand factor
Database Link:	NP_000543 Entrez Gene 7450 Human P04275
Background:	The glycoprotein encoded by this gene functions as both an antihemophilic factor carrier and a platelet-vessel wall mediator in the blood coagulation system. It is crucial to the hemostasis process. Mutations in this gene or deficiencies in this protein result in von Willebrand's disease. An unprocessed pseudogene has been found on chromosome 22. [provided by RefSeq, Jul 2008]

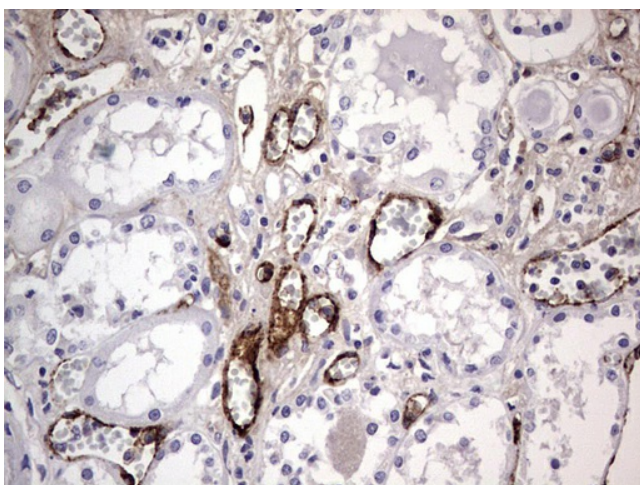


[View online »](#)

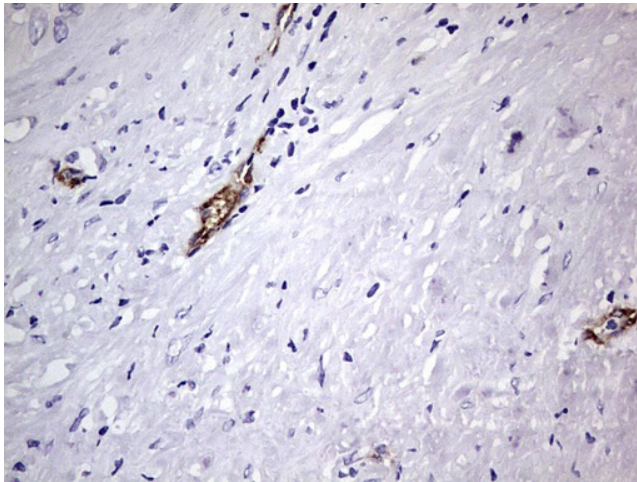
Synonyms: F8VWF; VWD
Protein Families: Druggable Genome, Secreted Protein
Protein Pathways: Complement and coagulation cascades, ECM-receptor interaction, Focal adhesion

Product images:

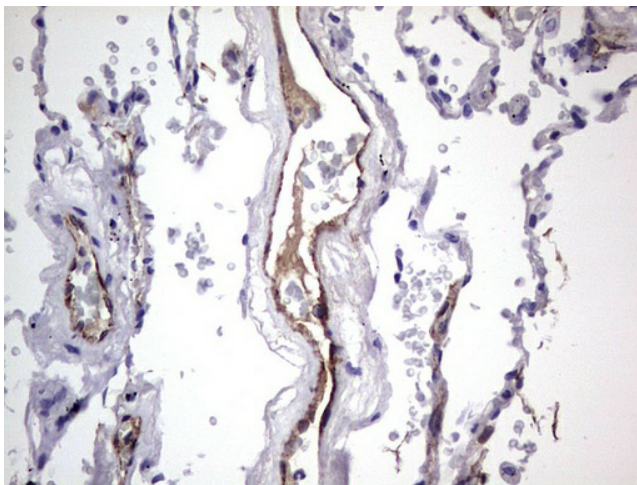
Immunohistochemical staining of paraffin-embedded Adenocarcinoma of Human breast tissue using anti-VWF mouse monoclonal antibody. (Heat-induced epitope retrieval by 1mM EDTA in 10mM Tris, pH8.5, 120°C for 3min, [TA803593])



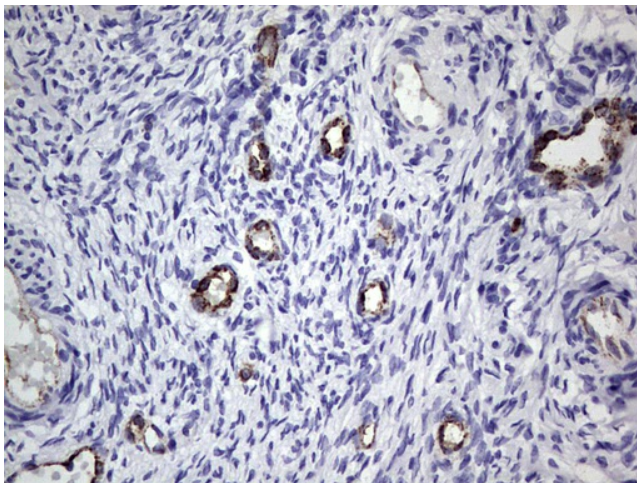
Immunohistochemical staining of paraffin-embedded Human Kidney tissue within the normal limits using anti-VWF mouse monoclonal antibody. (Heat-induced epitope retrieval by 1mM EDTA in 10mM Tris, pH8.5, 120°C for 3min, [TA803593])



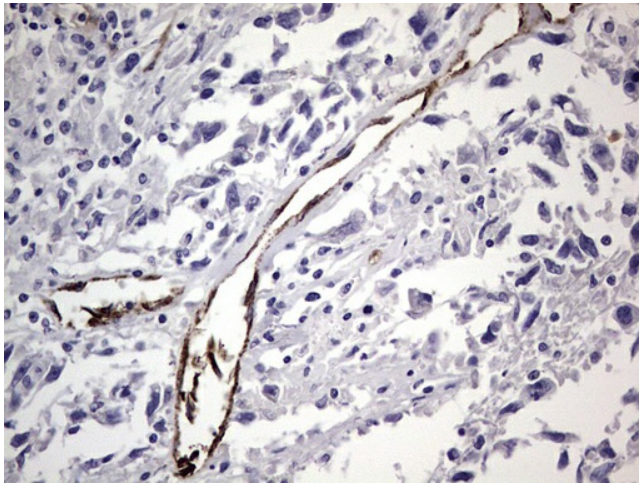
Immunohistochemical staining of paraffin-embedded Carcinoma of Human liver tissue using anti-VWF mouse monoclonal antibody. (Heat-induced epitope retrieval by 1mM EDTA in 10mM Tris, pH8.5, 120°C for 3min, [TA803593])



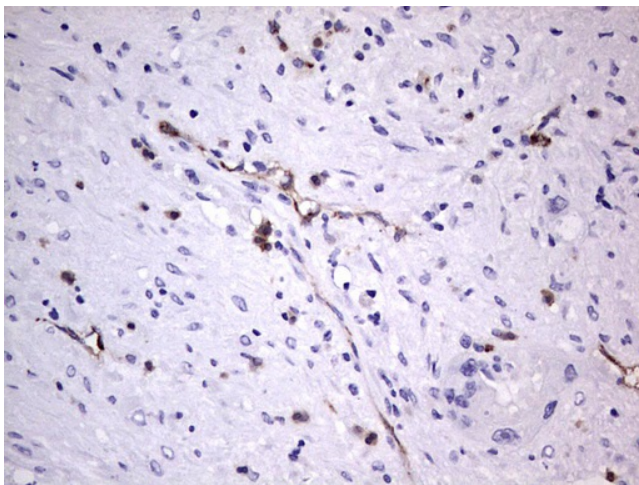
Immunohistochemical staining of paraffin-embedded Human lung tissue within the normal limits using anti-VWF mouse monoclonal antibody. (Heat-induced epitope retrieval by 1mM EDTA in 10mM Tris, pH8.5, 120°C for 3min, [TA803593])



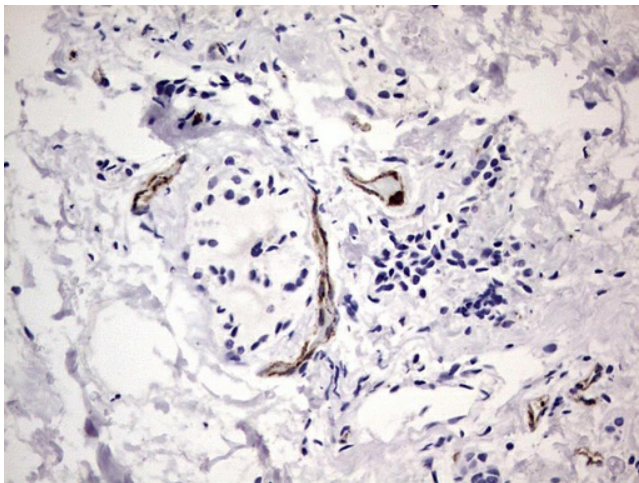
Immunohistochemical staining of paraffin-embedded Human Ovary tissue within the normal limits using anti-VWF mouse monoclonal antibody. (Heat-induced epitope retrieval by 1mM EDTA in 10mM Tris, pH8.5, 120°C for 3min, [TA803593])



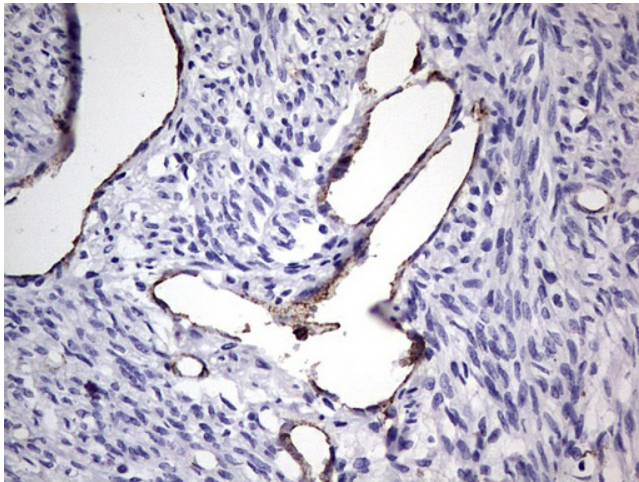
Immunohistochemical staining of paraffin-embedded Adenocarcinoma of Human ovary tissue using anti-VWF mouse monoclonal antibody. (Heat-induced epitope retrieval by 1mM EDTA in 10mM Tris, pH8.5, 120°C for 3min, [TA803593])



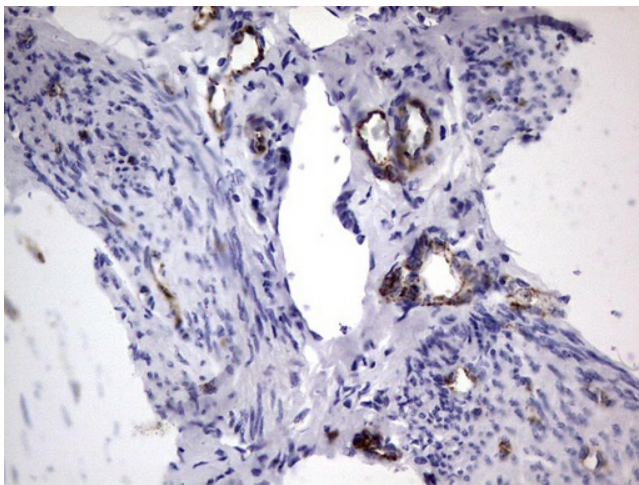
Immunohistochemical staining of paraffin-embedded Carcinoma of Human pancreas tissue using anti-VWF mouse monoclonal antibody. (Heat-induced epitope retrieval by 1mM EDTA in 10mM Tris, pH8.5, 120°C for 3min, [TA803593])



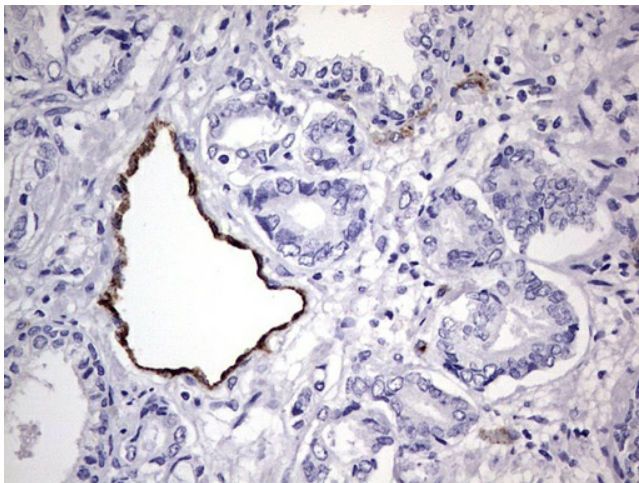
Immunohistochemical staining of paraffin-embedded Human thyroid tissue within the normal limits using anti-VWF mouse monoclonal antibody. (Heat-induced epitope retrieval by 1mM EDTA in 10mM Tris, pH8.5, 120°C for 3min, [TA803593])



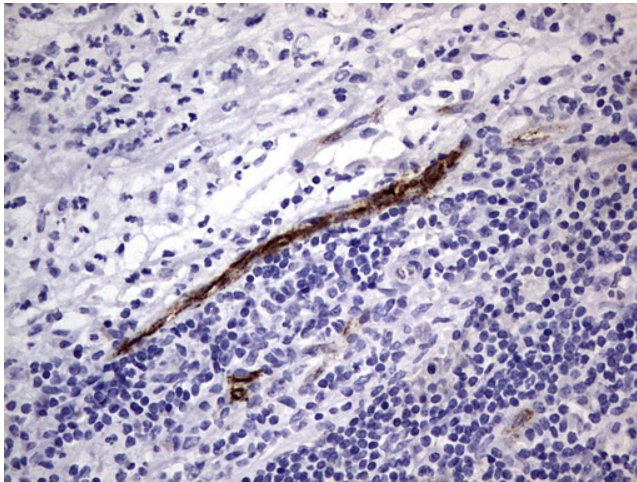
Immunohistochemical staining of paraffin-embedded Human endometrium tissue within the normal limits using anti-VWF mouse monoclonal antibody. (Heat-induced epitope retrieval by 1mM EDTA in 10mM Tris, pH8.5, 120°C for 3min, [TA803593])



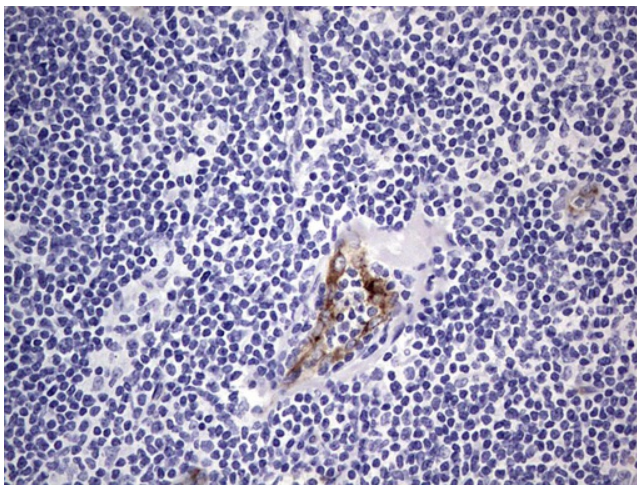
Immunohistochemical staining of paraffin-embedded Adenocarcinoma of Human endometrium tissue using anti-VWF mouse monoclonal antibody. (Heat-induced epitope retrieval by 1mM EDTA in 10mM Tris, pH8.5, 120°C for 3min, [TA803593])



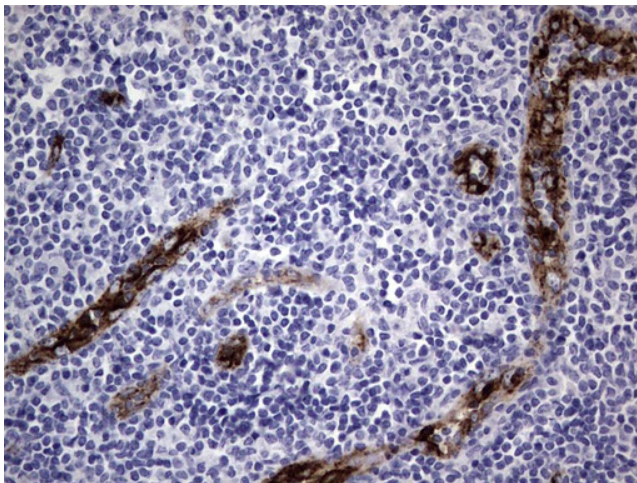
Immunohistochemical staining of paraffin-embedded Human prostate tissue within the normal limits using anti-VWF mouse monoclonal antibody. (Heat-induced epitope retrieval by 1mM EDTA in 10mM Tris, pH8.5, 120°C for 3min, [TA803593])



Immunohistochemical staining of paraffin-embedded Human lymph node tissue within the normal limits using anti-VWF mouse monoclonal antibody. (Heat-induced epitope retrieval by 1mM EDTA in 10mM Tris, pH8.5, 120°C for 3min, [TA803593])



Immunohistochemical staining of paraffin-embedded Human lymphoma tissue using anti-VWF mouse monoclonal antibody. (Heat-induced epitope retrieval by 1mM EDTA in 10mM Tris, pH8.5, 120°C for 3min, [TA803593])



Immunohistochemical staining of paraffin-embedded Human tonsil within the normal limits using anti-VWF mouse monoclonal antibody. (Heat-induced epitope retrieval by 1mM EDTA in 10mM Tris, pH8.5, 120°C for 3min, [TA803593])