

Product datasheet for **TA803592BM**

TMEM16A (ANO1) Mouse Monoclonal Antibody (HRP conjugated) [Clone ID: OTI1E6]

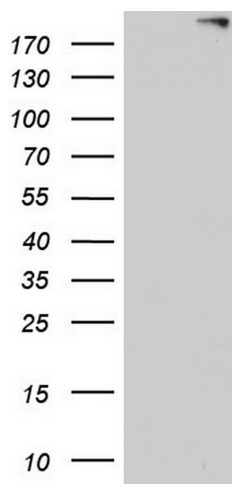
Product data:

Product Type:	Primary Antibodies
Clone Name:	OTI1E6
Applications:	WB
Recommended Dilution:	WB 1:500
Reactivity:	Human, Mouse, Rat
Host:	Mouse
Isotype:	IgG1
Clonality:	Monoclonal
Immunogen:	Human recombinant protein fragment corresponding to amino acids 1-333 of human ANO1 (NP_060513) produced in E.coli.
Formulation:	PBS (pH 7.3) containing 1% BSA, 50% glycerol.
Concentration:	0.5 mg/ml
Purification:	Purified from mouse ascites fluids or tissue culture supernatant by affinity chromatography (protein A/G)
Conjugation:	HRP
Storage:	Store at -20°C as received.
Stability:	Stable for 12 months from date of receipt.
Gene Name:	anoctamin 1
Database Link:	NP_060513 Entrez Gene 101772 Mouse Entrez Gene 309135 Rat Entrez Gene 55107 Human Q5XXA6
Synonyms:	DOG1; ORAOV2; TAOS2; TMEM16A
Protein Families:	Transmembrane



[View online »](#)

Product images:



HEK293T cells were transfected with the pCMV6-ENTRY control (Left lane) or pCMV6-ENTRY ANO1 ([RC229400], Right lane) cDNA for 48 hrs and lysed. Equivalent amounts of cell lysates (5 ug per lane) were separated by SDS-PAGE and immunoblotted with anti-ANO1.