

## Product datasheet for **TA803580BM**

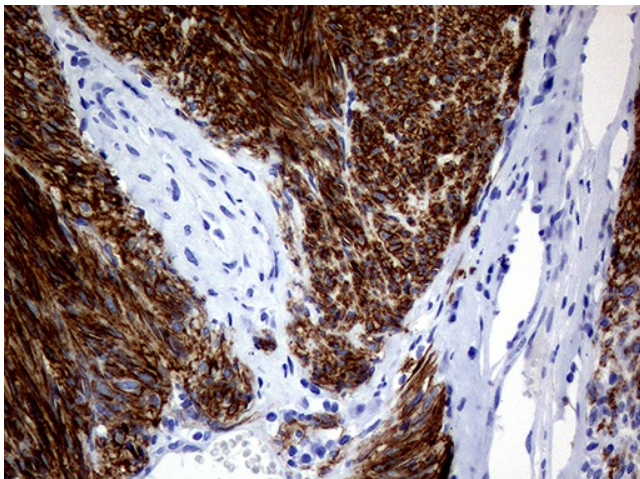
### **TMEM16A (ANO1) Mouse Monoclonal Antibody (HRP conjugated) [Clone ID: OTI1C6]**

#### **Product data:**

Product Type:	Primary Antibodies
Clone Name:	OTI1C6
Applications:	IHC
Recommended Dilution:	IHC 1:1000
Reactivity:	Human, Mouse, Rat
Host:	Mouse
Isotype:	IgG2a
Clonality:	Monoclonal
Immunogen:	Human recombinant protein fragment corresponding to amino acids 1-333 of human ANO1 (NP_060513) produced in E.coli.
Formulation:	PBS (pH 7.3) containing 1% BSA, 50% glycerol.
Concentration:	0.5 mg/ml
Purification:	Purified from mouse ascites fluids or tissue culture supernatant by affinity chromatography (protein A/G)
Conjugation:	HRP
Storage:	Store at -20°C as received.
Stability:	Stable for 12 months from date of receipt.
Gene Name:	anoctamin 1
Database Link:	<a href="#">NP_060513</a> <a href="#">Entrez Gene 101772 Mouse</a> <a href="#">Entrez Gene 309135 Rat</a> <a href="#">Entrez Gene 55107 Human</a> <a href="#">Q5XXA6</a>
Synonyms:	DOG1; ORAOV2; TAOS2; TMEM16A
Protein Families:	Transmembrane



[View online »](#)

**Product images:**

Immunohistochemical staining of paraffin-embedded Human gastric stromal tumor tissue using anti-ANO1 mouse monoclonal antibody. (Heat-induced epitope retrieval by Tris-EDTA (1:1000))