

## Product datasheet for **TA803578S**

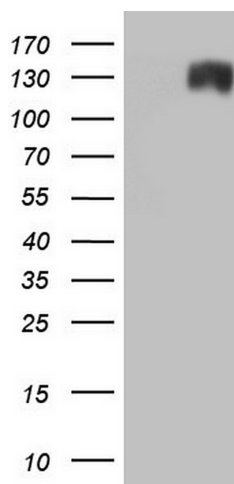
### TMEM16A (ANO1) Mouse Monoclonal Antibody [Clone ID: OTI5H7]

#### Product data:

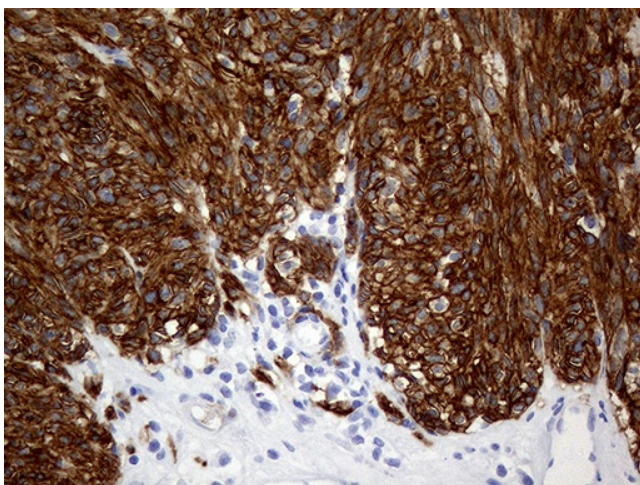
Product Type:	Primary Antibodies
Clone Name:	OTI5H7
Applications:	IHC, WB
Recommended Dilution:	WB 1:2000
Reactivity:	Human, Mouse, Rat
Host:	Mouse
Isotype:	IgG1
Clonality:	Monoclonal
Immunogen:	Human recombinant protein fragment corresponding to amino acids 1-333 of human ANO1 (NP_060513) produced in E.coli.
Formulation:	PBS (pH 7.3) containing 1% BSA, 50% glycerol and 0.02% sodium azide.
Concentration:	1 mg/ml
Purification:	Purified from mouse ascites fluids or tissue culture supernatant by affinity chromatography (protein A/G)
Conjugation:	Unconjugated
Storage:	Store at -20°C as received.
Stability:	Stable for 12 months from date of receipt.
Gene Name:	anoctamin 1
Database Link:	<a href="#">NP_060513</a> <a href="#">Entrez Gene 101772 Mouse</a> <a href="#">Entrez Gene 309135 Rat</a> <a href="#">Entrez Gene 55107 Human</a> <a href="#">Q5XXA6</a>
Synonyms:	DOG1; ORAOV2; TAOS2; TMEM16A
Protein Families:	Transmembrane



[View online »](#)

**Product images:**

HEK293T cells were transfected with the pCMV6-ENTRY control (Cat# [PS100001], Left lane) or pCMV6-ENTRY ANO1 (Cat# [RC229400], Right lane) cDNA for 48 hrs and lysed. Equivalent amounts of cell lysates (5 ug per lane) were separated by SDS-PAGE and immunoblotted with anti-ANO1 (Cat# [TA803578]).



Immunohistochemical staining of paraffin-embedded Human gastric stromal tumor tissue using anti-ANO1 mouse monoclonal antibody. (Heat-induced epitope retrieval by 1mM EDTA in 10mM Tris buffer (pH8.0) at 120°C for 3min)