

## Product datasheet for **TA803573S**

### UBE2B Mouse Monoclonal Antibody [Clone ID: OTI1E11]

#### Product data:

Product Type:	Primary Antibodies
Clone Name:	OTI1E11
Applications:	WB
Recommended Dilution:	WB 1:2000
Reactivity:	Human, Mouse, Rat
Host:	Mouse
Isotype:	IgG2b
Clonality:	Monoclonal
Immunogen:	Full length human recombinant protein of human UBE2B (NP_003328) produced in E.coli.
Formulation:	PBS (pH 7.3) containing 1% BSA, 50% glycerol and 0.02% sodium azide.
Concentration:	1 mg/ml
Purification:	Purified from mouse ascites fluids or tissue culture supernatant by affinity chromatography (protein A/G)
Conjugation:	Unconjugated
Storage:	Store at -20°C as received.
Stability:	Stable for 12 months from date of receipt.
Predicted Protein Size:	17.1 kDa
Gene Name:	ubiquitin conjugating enzyme E2 B
Database Link:	<a href="#">NP_003328</a> <a href="#">Entrez Gene 22210 Mouse</a> <a href="#">Entrez Gene 81816 Rat</a> <a href="#">Entrez Gene 7320 Human</a> <a href="#">P63146</a>



[View online »](#)

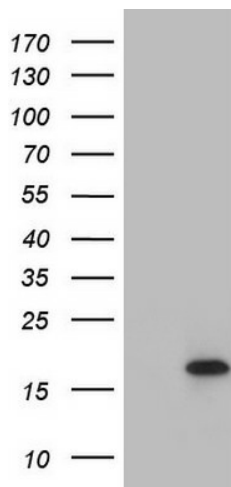
**Background:** The modification of proteins with ubiquitin is an important cellular mechanism for targeting abnormal or short-lived proteins for degradation. Ubiquitination involves at least three classes of enzymes: ubiquitin-activating enzymes, or E1s, ubiquitin-conjugating enzymes, or E2s, and ubiquitin-protein ligases, or E3s. This gene encodes a member of the E2 ubiquitin-conjugating enzyme family. This enzyme is required for post-replicative DNA damage repair. Its protein sequence is 100% identical to the mouse, rat, and rabbit homologs, which indicates that this enzyme is highly conserved in eukaryotic evolution. [provided by RefSeq, Jul 2008]

**Synonyms:** E2-17kDa; HHR6B; HR6B; RAD6B; UBC2

**Protein Families:** Druggable Genome

**Protein Pathways:** Ubiquitin mediated proteolysis

**Product images:**



HEK293T cells were transfected with the pCMV6-ENTRY control (Cat# [PS100001], Left lane) or pCMV6-ENTRY UBE2B (Cat# [RC203306], Right lane) cDNA for 48 hrs and lysed. Equivalent amounts of cell lysates (5 ug per lane) were separated by SDS-PAGE and immunoblotted with anti-UBE2B (Cat# [TA803573]). Positive lysates [LY418755] (100ug) and [LC418755] (20ug) can be purchased separately from OriGene.