

## Product datasheet for **TA803573BM**

### UBE2B Mouse Monoclonal Antibody (HRP conjugated) [Clone ID: OT11E11]

#### Product data:

|                         |   |
|-------------------------|---|
| Product Type:           | Primary Antibodies  |
| Clone Name:             | OT11E11   |
| Applications:           | WB  |
| Recommended Dilution:   | WB 1:2000   |
| Reactivity:             | Human, Mouse, Rat   |
| Host:                   | Mouse   |
| Isotype:                | IgG2b   |
| Clonality:              | Monoclonal  |
| Immunogen:              | Full length human recombinant protein of human UBE2B (NP_003328) produced in E.coli.  |
| Formulation:            | PBS (pH 7.3) containing 1% BSA, 50% glycerol.   |
| Concentration:          | 0.5 mg/ml   |
| Purification:           | Purified from mouse ascites fluids or tissue culture supernatant by affinity chromatography (protein A/G)   |
| Conjugation:            | HRP   |
| Storage:                | Store at -20°C as received.   |
| Stability:              | Stable for 12 months from date of receipt.  |
| Predicted Protein Size: | 17.1 kDa  |
| Gene Name:              | ubiquitin conjugating enzyme E2 B   |
| Database Link:          | <a href="#">NP_003328</a><br><a href="#">Entrez Gene 22210 Mouse</a> <a href="#">Entrez Gene 81816 Rat</a> <a href="#">Entrez Gene 7320 Human</a><br><a href="#">P63146</a> |



[View online »](#)

**Background:**

The modification of proteins with ubiquitin is an important cellular mechanism for targeting abnormal or short-lived proteins for degradation. Ubiquitination involves at least three classes of enzymes: ubiquitin-activating enzymes, or E1s, ubiquitin-conjugating enzymes, or E2s, and ubiquitin-protein ligases, or E3s. This gene encodes a member of the E2 ubiquitin-conjugating enzyme family. This enzyme is required for post-replicative DNA damage repair. Its protein sequence is 100% identical to the mouse, rat, and rabbit homologs, which indicates that this enzyme is highly conserved in eukaryotic evolution. [provided by RefSeq, Jul 2008]

**Synonyms:**

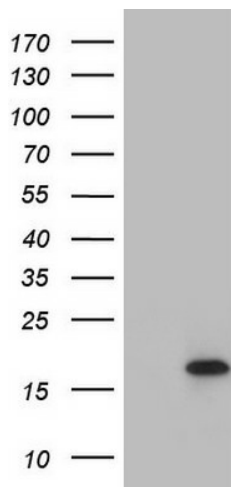
E2-17kDa; HHR6B; HR6B; RAD6B; UBC2

**Protein Families:**

Druggable Genome

**Protein Pathways:**

Ubiquitin mediated proteolysis

**Product images:**

HEK293T cells were transfected with the pCMV6-ENTRY control (Cat# [PS100001], Left lane) or pCMV6-ENTRY UBE2B (Cat# [RC203306], Right lane) cDNA for 48 hrs and lysed. Equivalent amounts of cell lysates (5 ug per lane) were separated by SDS-PAGE and immunoblotted with anti-UBE2B (Cat# [TA803573]). Positive lysates [LY418755] (100ug) and [LC418755] (20ug) can be purchased separately from OriGene.