

Product datasheet for **TA803548**

CD146 (MCAM) Mouse Monoclonal Antibody [Clone ID: OTI5C4]

Product data:

Product Type:	Primary Antibodies
Clone Name:	OTI5C4
Applications:	IHC, WB
Recommended Dilution:	WB 1:2000, IHC 1:150
Reactivity:	Human
Host:	Mouse
Isotype:	IgG1
Clonality:	Monoclonal
Immunogen:	Full length human recombinant protein of human MCAM (NP_006491) produced in HEK293T cell.
Formulation:	PBS (pH 7.3) containing 1% BSA, 50% glycerol and 0.02% sodium azide.
Concentration:	1 mg/ml
Purification:	Purified from mouse ascites fluids or tissue culture supernatant by affinity chromatography (protein A/G)
Conjugation:	Unconjugated
Storage:	Store at -20°C as received.
Stability:	Stable for 12 months from date of receipt.
Predicted Protein Size:	71.4 kDa
Gene Name:	melanoma cell adhesion molecule
Database Link:	NP_006491 Entrez Gene 4162 Human P43121
Synonyms:	CD146; MUC18
Protein Families:	Druggable Genome, ES Cell Differentiation/IPS, Transmembrane



[View online »](#)

Product images:

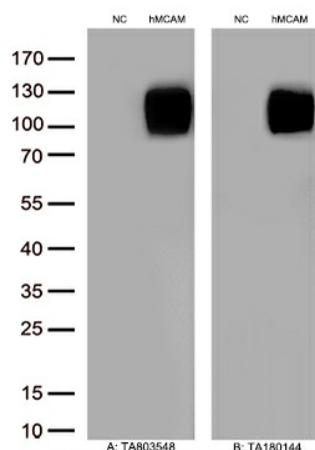
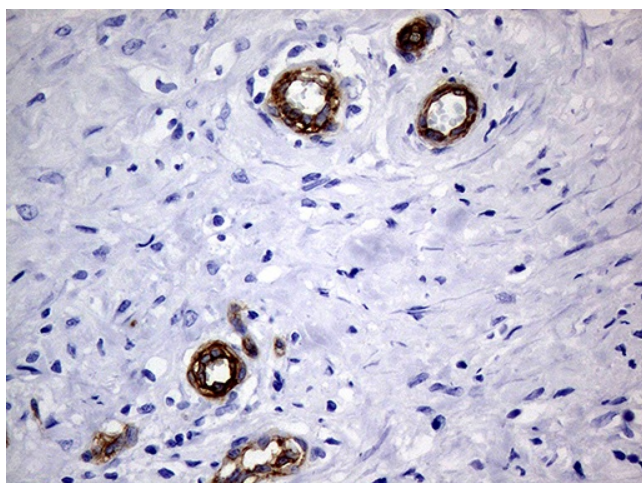
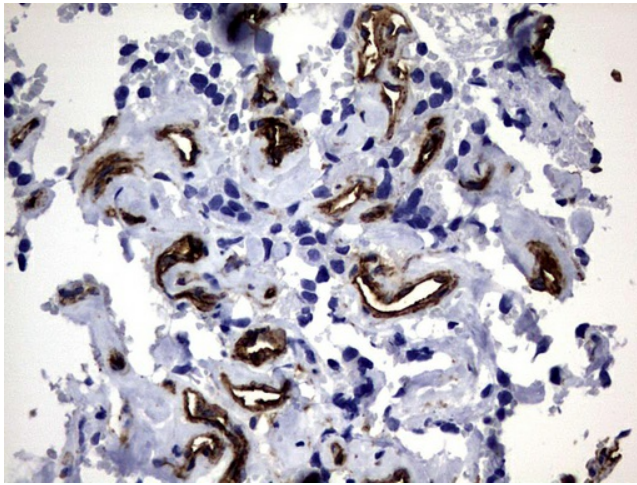


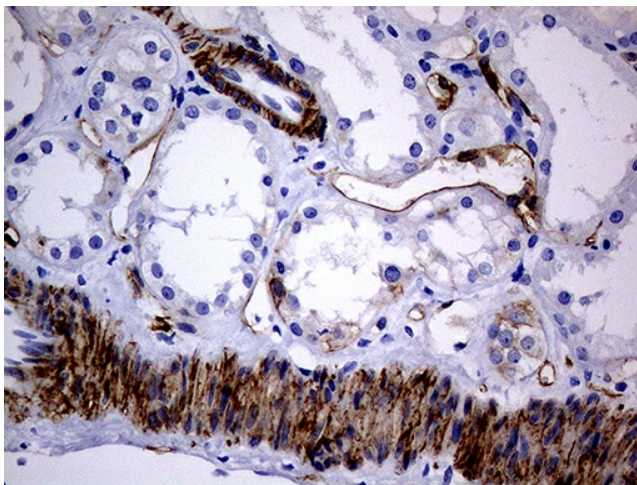
Figure A, Western blot analysis of overexpressed lysates (15ug per lane) from HEK293T cells transfected with empty plasmid ([PS100001], NC), human MCAM plasmid ([RC208937], hMCAM) using anti-MCAM antibody TA803548 (1:500). Figure B, Western blot analysis of the same samples as figure A with anti-DDK antibody ([TA180144], 1:1000)



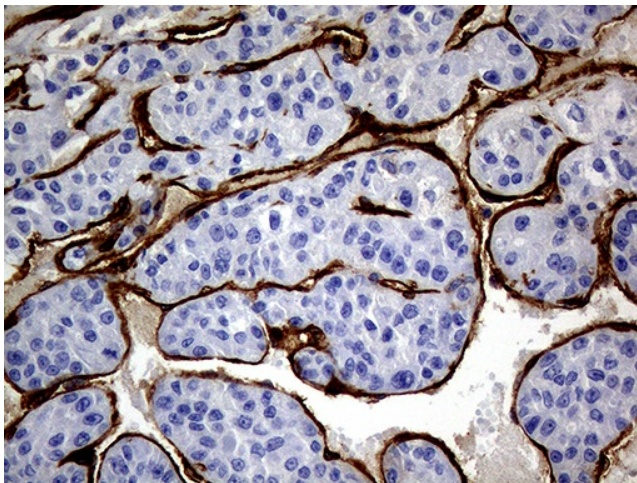
Immunohistochemical staining of paraffin-embedded Human breast tissue within the normal limits using anti-MCAM mouse monoclonal antibody. (Heat-induced epitope retrieval by 1mM EDTA in 10mM Tris buffer (pH8.0) at 120°C for 3min, TA803548) (1:100)



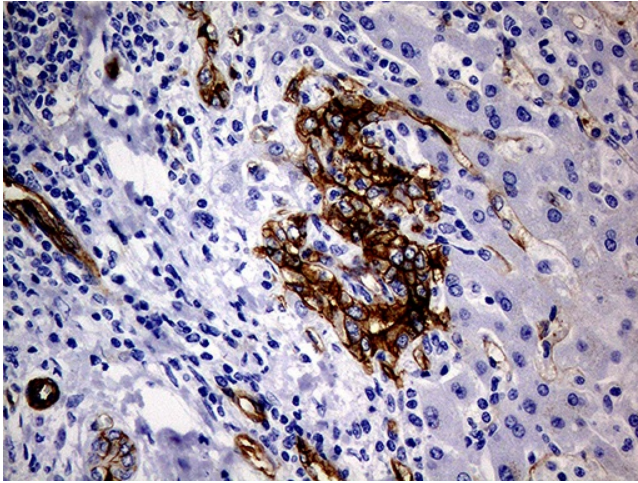
Immunohistochemical staining of paraffin-embedded Adenocarcinoma of Human breast tissue using anti-MCAM mouse monoclonal antibody. (Heat-induced epitope retrieval by 1mM EDTA in 10mM Tris, pH9.0, 120°C for 3min, TA803548)



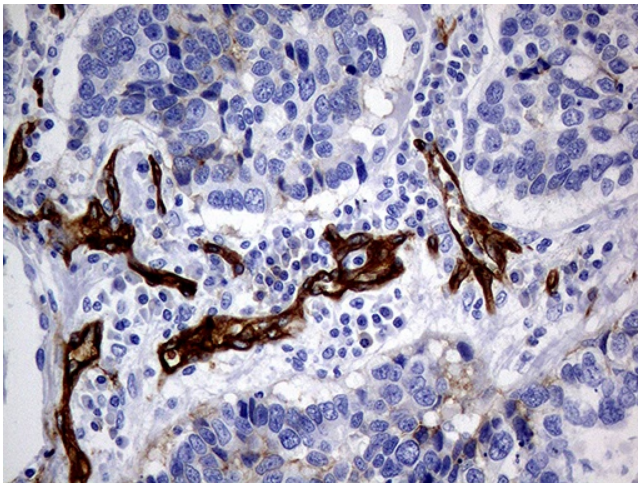
Immunohistochemical staining of paraffin-embedded Human Kidney tissue using anti-MCAM mouse monoclonal antibody. (Heat-induced epitope retrieval by 1mM EDTA in 10mM Tris buffer (pH8.0) at 120°C for 3min) (TA803548) (1:100)



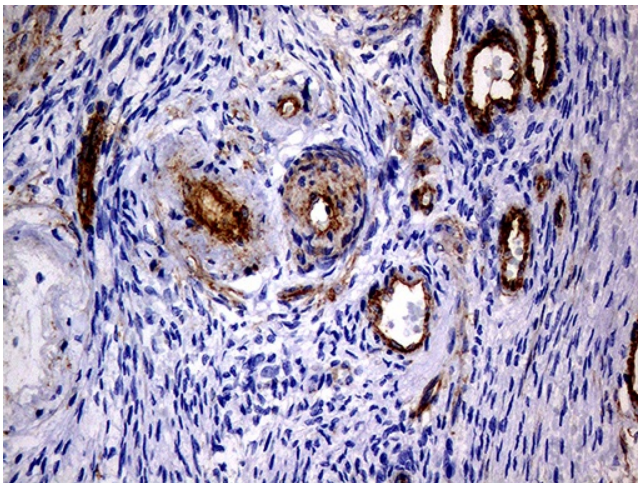
Immunohistochemical staining of paraffin-embedded Human liver tissue within the normal limits using anti-MCAM mouse monoclonal antibody. (Heat-induced epitope retrieval by 1mM EDTA in 10mM Tris buffer (pH8.0) at 120°C for 3min, TA803548) (1:100)



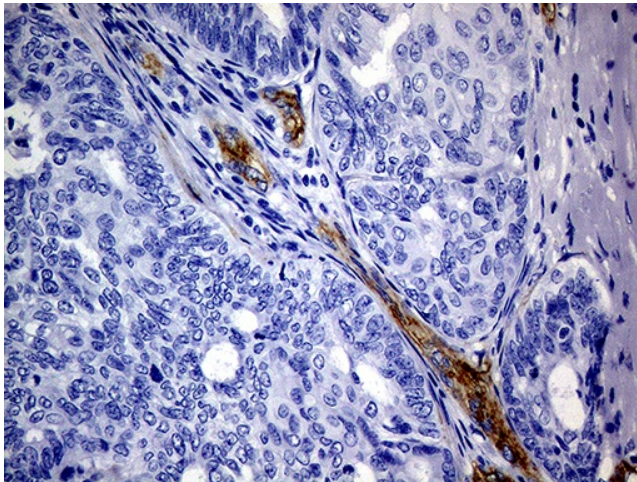
Immunohistochemical staining of paraffin-embedded Carcinoma of Human liver tissue using anti-MCAM mouse monoclonal antibody. (Heat-induced epitope retrieval by 1mM EDTA in 10mM Tris buffer (pH8.0) at 120°C for 3min, TA803548) (1:100)



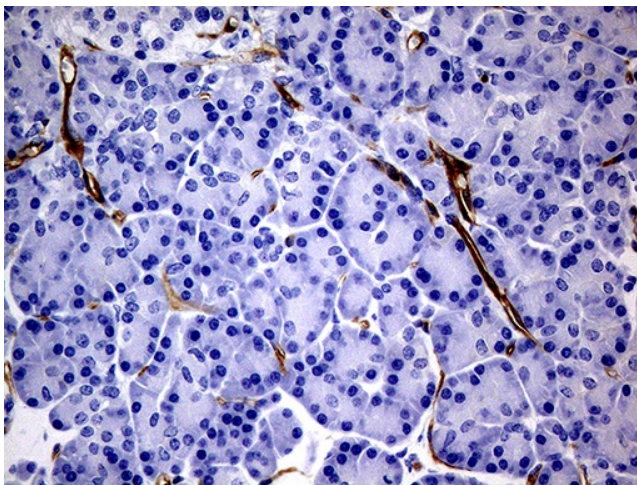
Immunohistochemical staining of paraffin-embedded Carcinoma of Human lung tissue using anti-MCAM mouse monoclonal antibody. (Heat-induced epitope retrieval by 1mM EDTA in 10mM Tris buffer (pH8.0) at 120°C for 3min, TA803548) (1:100)



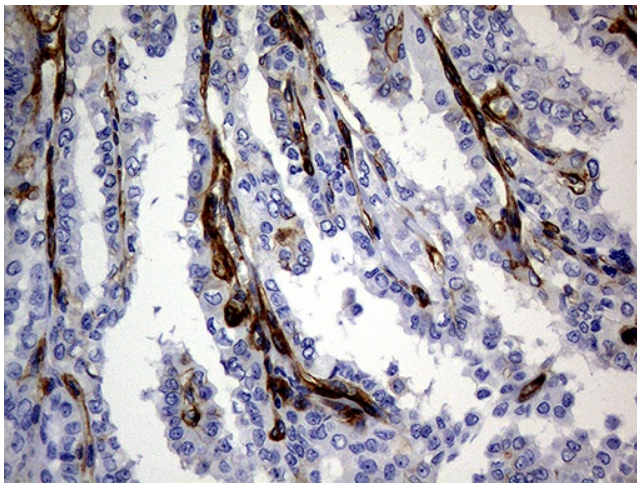
Immunohistochemical staining of paraffin-embedded Human Ovary tissue within the normal limits using anti-MCAM mouse monoclonal antibody. (Heat-induced epitope retrieval by 1mM EDTA in 10mM Tris buffer (pH8.0) at 120°C for 3min, TA803548) (1:100)



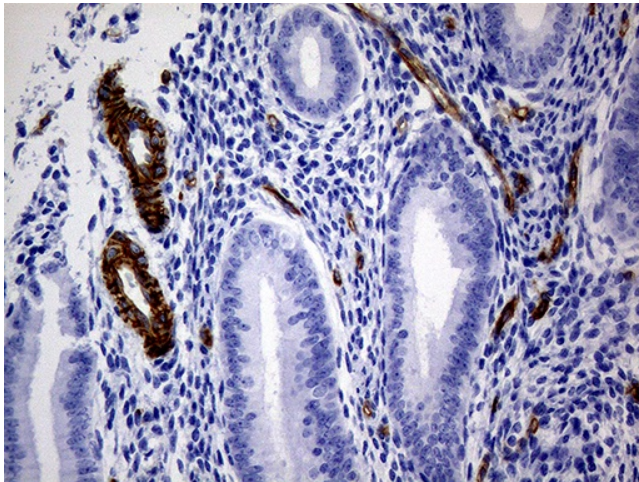
Immunohistochemical staining of paraffin-embedded Adenocarcinoma of Human ovary tissue using anti-MCAM mouse monoclonal antibody. (Heat-induced epitope retrieval by 1mM EDTA in 10mM Tris buffer (pH8.0) at 120°C for 3min, TA803548) (1:100)



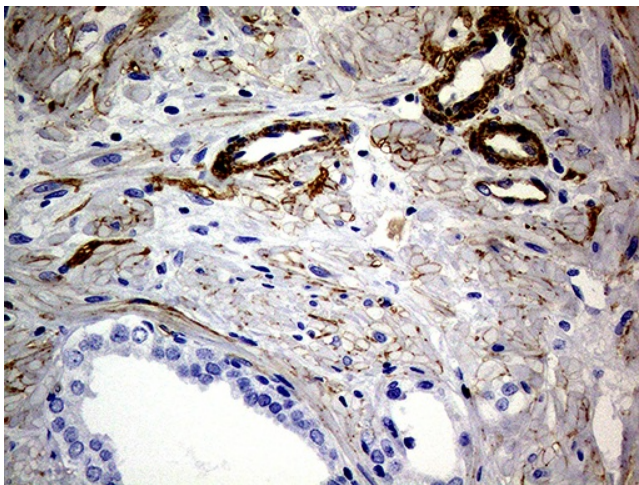
Immunohistochemical staining of paraffin-embedded Human pancreas tissue using anti-MCAM mouse monoclonal antibody. (Heat-induced epitope retrieval by 1mM EDTA in 10mM Tris buffer (pH8.0) at 120°C for 3min) (TA803548) (1:100)



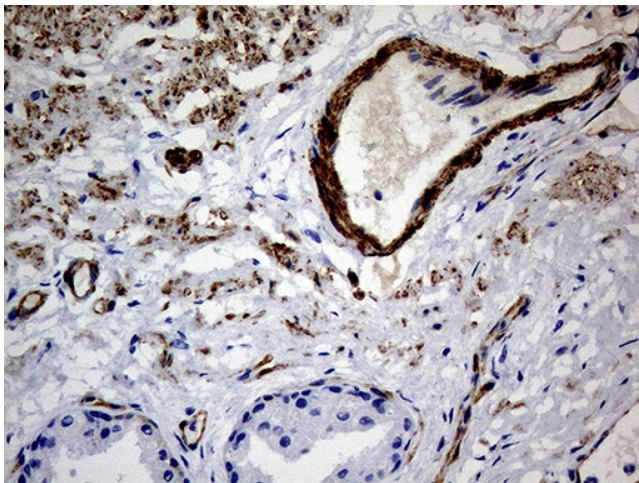
Immunohistochemical staining of paraffin-embedded Carcinoma of Human thyroid tissue using anti-MCAM mouse monoclonal antibody. (Heat-induced epitope retrieval by 1mM EDTA in 10mM Tris buffer (pH8.0) at 120°C for 3min, TA803548) (1:100)



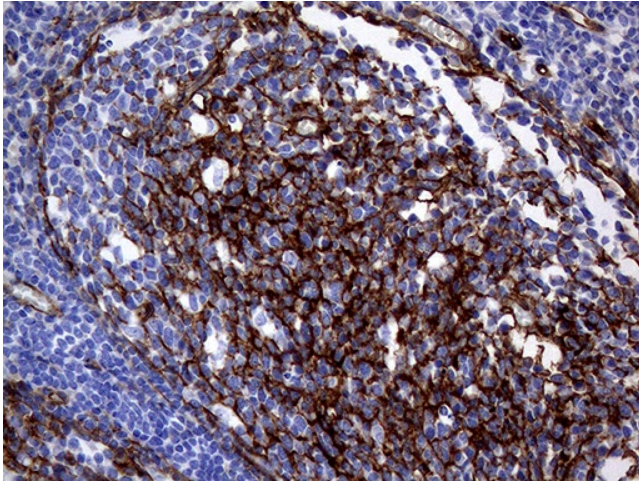
Immunohistochemical staining of paraffin-embedded Human endometrium tissue using anti-MCAM mouse monoclonal antibody. (Heat-induced epitope retrieval by 1mM EDTA in 10mM Tris buffer (pH8.0) at 120°C for 3min) (TA803548) (1:100)



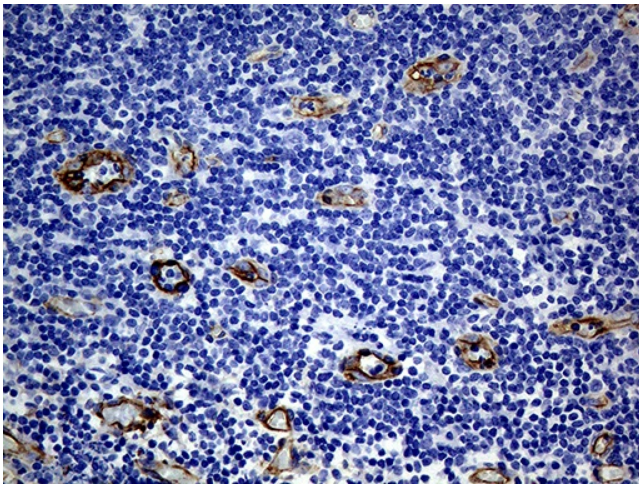
Immunohistochemical staining of paraffin-embedded Human prostate tissue using anti-MCAM mouse monoclonal antibody. (Heat-induced epitope retrieval by 1mM EDTA in 10mM Tris buffer (pH8.0) at 120°C for 3min)



Immunohistochemical staining of paraffin-embedded Carcinoma of Human prostate tissue using anti-MCAM mouse monoclonal antibody. (Heat-induced epitope retrieval by 1mM EDTA in 10mM Tris buffer (pH8.0) at 120°C for 3min, TA803548) (1:100)



Immunohistochemical staining of paraffin-embedded Human lymph node tissue within the normal limits using anti-MCAM mouse monoclonal antibody. (Heat-induced epitope retrieval by 1mM EDTA in 10mM Tris buffer (pH8.0) at 120°C for 3min, TA803548) (1:100)



Immunohistochemical staining of paraffin-embedded Human tonsil using anti-MCAM mouse monoclonal antibody. (Heat-induced epitope retrieval by 1mM EDTA in 10mM Tris buffer (pH8.0) at 120°C for 3min) (TA803548) (1:100)