

## Product datasheet for **TA803535BM**

### **BMP4 Mouse Monoclonal Antibody (HRP conjugated) [Clone ID: OTI1C2]**

#### **Product data:**

|                         |  |
|-------------------------|--|
| Product Type:           | Primary Antibodies   |
| Clone Name:             | OTI1C2   |
| Applications:           | WB   |
| Recommended Dilution:   | WB 1:500   |
| Reactivity:             | Human, Mouse, Rat  |
| Host:                   | Mouse  |
| Isotype:                | IgG2b  |
| Clonality:              | Monoclonal   |
| Immunogen:              | Human recombinant protein fragment corresponding to amino acids 293-408 of human BMP4 (NP_001193) produced in E.coli.  |
| Formulation:            | PBS (pH 7.3) containing 1% BSA, 50% glycerol.  |
| Concentration:          | 0.5 mg/ml  |
| Purification:           | Purified from mouse ascites fluids or tissue culture supernatant by affinity chromatography (protein A/G)  |
| Conjugation:            | HRP  |
| Storage:                | Store at -20°C as received.  |
| Stability:              | Stable for 12 months from date of receipt.   |
| Predicted Protein Size: | 46.4 kDa   |
| Gene Name:              | bone morphogenetic protein 4   |
| Database Link:          | <a href="#">NP_001193</a><br><a href="#">Entrez Gene 12159 Mouse</a> <a href="#">Entrez Gene 25296 Rat</a> <a href="#">Entrez Gene 652 Human</a><br><a href="#">P12644</a> |



[View online »](#)

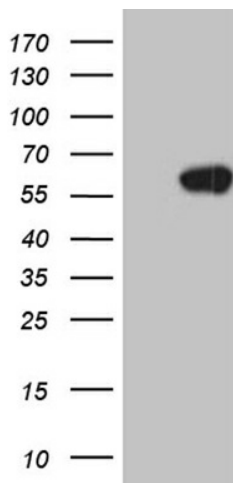
**Background:** This gene encodes a member of the bone morphogenetic protein (BMP) family of proteins, which is part of the transforming growth factor-beta (TGF-beta) superfamily. Members of the BMP family play an important role in bone and cartilage development. The encoded preproprotein is proteolytically processed to generate each subunit of the disulfide-linked homodimer. Mutations in this gene are associated with orofacial cleft and microphthalmia in human patients. The encoded protein may also be involved in the pathology of multiple cardiovascular diseases and human cancers. Alternative splicing results in multiple transcript variants. [provided by RefSeq, Nov 2015]

**Synonyms:** BMP2B; BMP2B1; MCOPS6; OFC11; ZYME

**Protein Families:** Adult stem cells, Cancer stem cells, Druggable Genome, Embryonic stem cells, Induced pluripotent stem cells, Secreted Protein, Stem cell relevant signaling - TGFb/BMP signaling pathway

**Protein Pathways:** Basal cell carcinoma, Hedgehog signaling pathway, Pathways in cancer, TGF-beta signaling pathway

### Product images:



HEK293T cells were transfected with the pCMV6-ENTRY control (Left lane) or pCMV6-ENTRY BMP4 ([RC204473], Right lane) cDNA for 48 hrs and lysed. Equivalent amounts of cell lysates (5 ug per lane) were separated by SDS-PAGE and immunoblotted with anti-BMP4. Positive lysates [LY429051] (100ug) and [LC429051] (20ug) can be purchased separately from OriGene.