

Product datasheet for **TA803521S**

MSMB Mouse Monoclonal Antibody [Clone ID: OTI2C11]

Product data:

Product Type:	Primary Antibodies
Clone Name:	OTI2C11
Applications:	IHC, WB
Recommended Dilution:	WB 1:200 - 1:1000
Reactivity:	Human
Host:	Mouse
Isotype:	IgG1
Clonality:	Monoclonal
Immunogen:	Purified prostate specific antigen (MSMB) from human seminal fluid
Formulation:	PBS (pH 7.3) containing 1% BSA, 50% glycerol and 0.02% sodium azide.
Concentration:	1 mg/ml
Purification:	Purified from mouse ascites fluids or tissue culture supernatant by affinity chromatography (protein A/G)
Conjugation:	Unconjugated
Storage:	Store at -20°C as received.
Stability:	Stable for 12 months from date of receipt.
Predicted Protein Size:	10.7 kDa
Gene Name:	microseminoprotein, beta-
Database Link:	NP_002434 Entrez Gene 4477 Human P08118
Background:	The protein encoded by this gene is a member of the immunoglobulin binding factor family. It is synthesized by the epithelial cells of the prostate gland and secreted into the seminal plasma. This protein has inhibin-like activity. It may have a role as an autocrine paracrine factor in uterine, breast and other female reproductive tissues. The expression of the encoded protein is found to be decreased in prostate cancer. Two alternatively spliced transcript variants encoding different isoforms are described for this gene. The use of alternate polyadenylation sites has been found for this gene. [provided by RefSeq, Jul 2008]

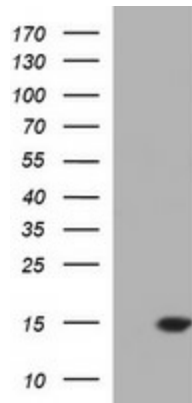


[View online »](#)

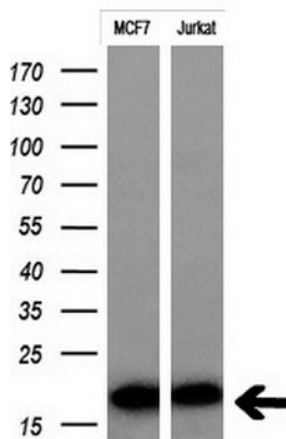
Synonyms: HPC13; IGBF; MSP; MSPB; PN44; PRPS; PSP; PSP-94; PSP57; PSP94

Protein Families: Secreted Protein, Transmembrane

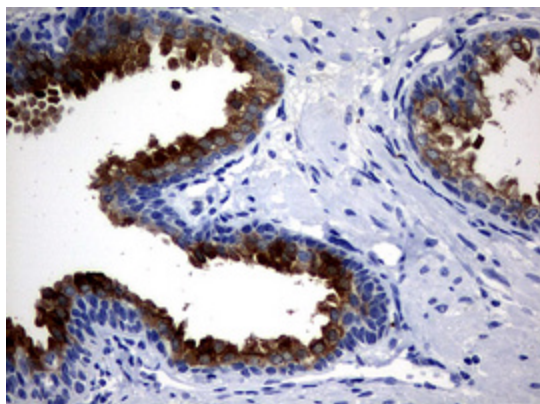
Product images:



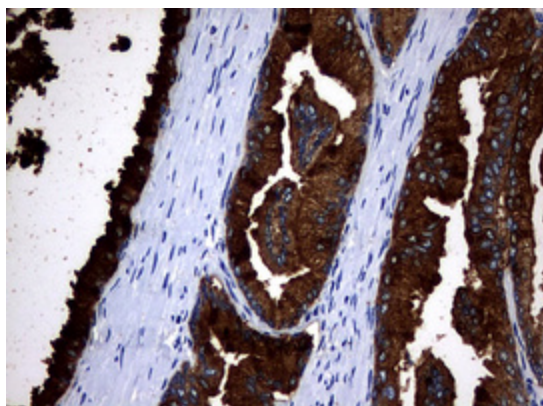
HEK293T cells were transfected with the pCMV6-ENTRY control (Left lane) or pCMV6-ENTRY MSMB ([RC202704], Right lane) cDNA for 48 hrs and lysed. Equivalent amounts of cell lysates (5 ug per lane) were separated by SDS-PAGE and immunoblotted with anti-MSMB. Positive lysates [LY400872] (100ug) and [LC400872] (20ug) can be purchased separately from OriGene.



Western blot analysis of extracts (10ug) from 2 different cell lines by using anti-MSMB monoclonal antibody at 1:200.



Immunohistochemical staining of paraffin-embedded Human prostate tissue within the normal limits using anti-MSMB mouse monoclonal antibody. ([TA803521]) Dilution: 1:150



Immunohistochemical staining of paraffin-embedded Carcinoma of Human prostate tissue using anti-MSMB mouse monoclonal antibody. ([TA803521]) Dilution: 1:150