

Product datasheet for **TA803507M**

MSMB Mouse Monoclonal Antibody [Clone ID: OTI2C3]

Product data:

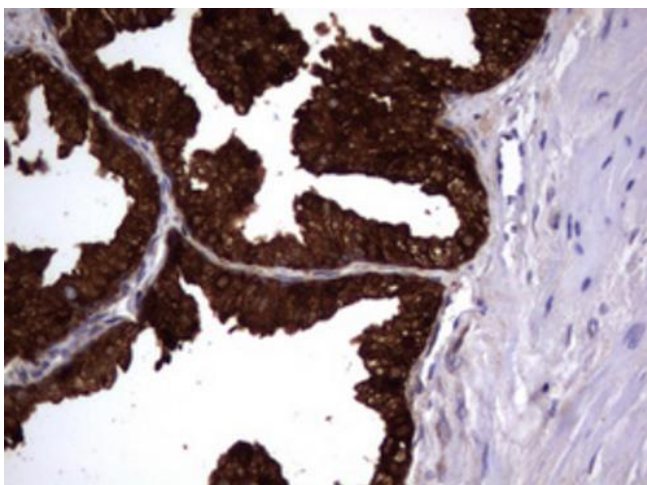
Product Type:	Primary Antibodies
Clone Name:	OTI2C3
Applications:	IHC
Recommended Dilution:	IHC 1:150
Reactivity:	Human
Host:	Mouse
Isotype:	IgG2b
Clonality:	Monoclonal
Immunogen:	Purified prostate specific antigen (MSMB) from human seminal fluid
Formulation:	PBS (pH 7.3) containing 1% BSA, 50% glycerol and 0.02% sodium azide.
Concentration:	1 mg/ml
Purification:	Purified from mouse ascites fluids or tissue culture supernatant by affinity chromatography (protein A/G)
Conjugation:	Unconjugated
Storage:	Store at -20°C as received.
Stability:	Stable for 12 months from date of receipt.
Predicted Protein Size:	10.7 kDa
Gene Name:	microseminoprotein, beta-
Database Link:	NP_002434 Entrez Gene 4477 Human P08118
Background:	The protein encoded by this gene is a member of the immunoglobulin binding factor family. It is synthesized by the epithelial cells of the prostate gland and secreted into the seminal plasma. This protein has inhibin-like activity. It may have a role as an autocrine paracrine factor in uterine, breast and other female reproductive tissues. The expression of the encoded protein is found to be decreased in prostate cancer. Two alternatively spliced transcript variants encoding different isoforms are described for this gene. The use of alternate polyadenylation sites has been found for this gene. [provided by RefSeq, Jul 2008]

[View online »](#)

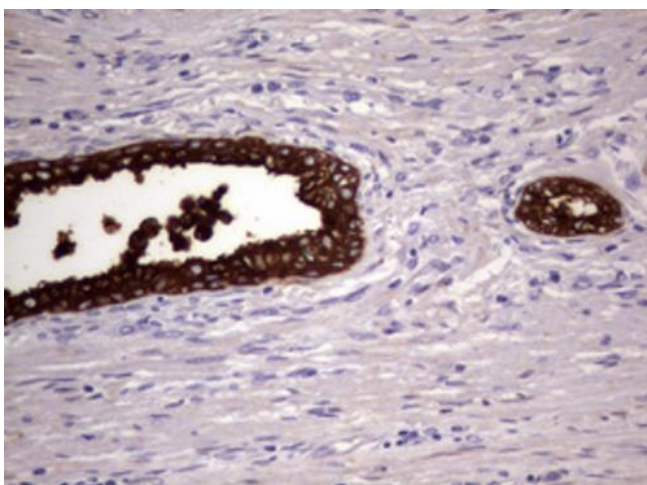
Synonyms: HPC13; IGBF; MSP; MSPB; PN44; PRPS; PSP; PSP-94; PSP57; PSP94

Protein Families: Secreted Protein, Transmembrane

Product images:



Immunohistochemical staining of paraffin-embedded Human prostate tissue within the normal limits using anti-MSMB mouse monoclonal antibody. ([TA803507]) Dilution: 1:150. Heat-induced epitope retrieval by EDTA solution buffer pH 8.0 at 120°C for 3 min.



Immunohistochemical staining of paraffin-embedded Carcinoma of Human prostate tissue using anti-MSMB mouse monoclonal antibody. ([TA803507]) Dilution: 1:150. Heat-induced epitope retrieval by EDTA solution buffer pH 8.0 at 120°C for 3 min.