

Product datasheet for **TA803494**

Lamin A (LMNA) Mouse Monoclonal Antibody [Clone ID: OTI1B7]

Product data:

Product Type:	Primary Antibodies
Clone Name:	OTI1B7
Applications:	IF, WB
Recommended Dilution:	WB 1:2000
Reactivity:	Human, Mouse, Rat
Host:	Mouse
Isotype:	IgG1
Clonality:	Monoclonal
Immunogen:	Full length human recombinant protein of human LMNA (NP_733821) produced in HEK293T cell.
Formulation:	PBS (pH 7.3) containing 1% BSA, 50% glycerol and 0.02% sodium azide.
Concentration:	1 mg/ml
Purification:	Purified from mouse ascites fluids or tissue culture supernatant by affinity chromatography (protein A/G)
Conjugation:	Unconjugated
Storage:	Store at -20°C as received.
Stability:	Stable for 12 months from date of receipt.
Predicted Protein Size:	74 kDa
Gene Name:	lamin A/C
Database Link:	NP_733821 Entrez Gene 16905 Mouse Entrez Gene 60374 Rat Entrez Gene 4000 Human P02545



[View online »](#)

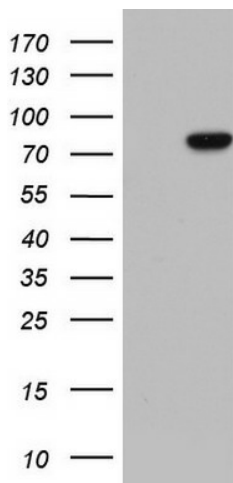
Background: The nuclear lamina consists of a two-dimensional matrix of proteins located next to the inner nuclear membrane. The lamin family of proteins make up the matrix and are highly conserved in evolution. During mitosis, the lamina matrix is reversibly disassembled as the lamin proteins are phosphorylated. Lamin proteins are thought to be involved in nuclear stability, chromatin structure and gene expression. Vertebrate lamins consist of two types, A and B. Alternative splicing results in multiple transcript variants. Mutations in this gene lead to several diseases: Emery-Dreifuss muscular dystrophy, familial partial lipodystrophy, limb girdle muscular dystrophy, dilated cardiomyopathy, Charcot-Marie-Tooth disease, and Hutchinson-Gilford progeria syndrome. [provided by RefSeq, Apr 2012]

Synonyms: CDCD1; CDDC; CMD1A; CMT2B1; EMD2; FPL; FPLD; FPLD2; HGPS; IDC; LDP1; LFP; LGMD1B; LMN1; LMNC

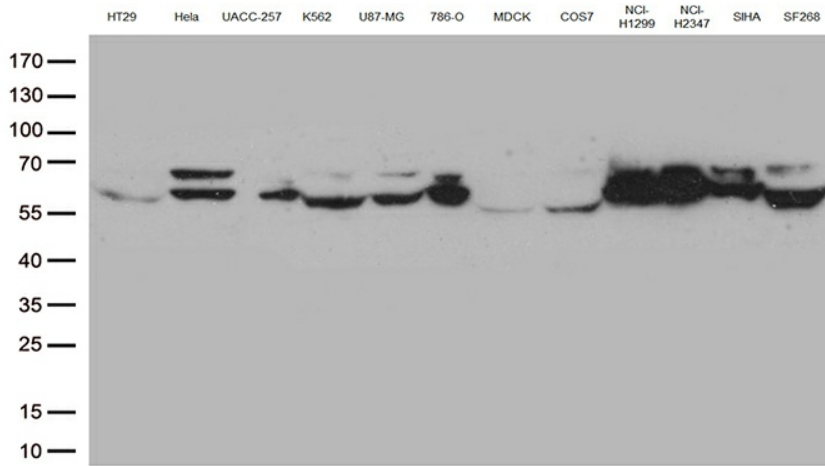
Protein Families: Druggable Genome

Protein Pathways: Arrhythmogenic right ventricular cardiomyopathy (ARVC), Dilated cardiomyopathy, Hypertrophic cardiomyopathy (HCM)

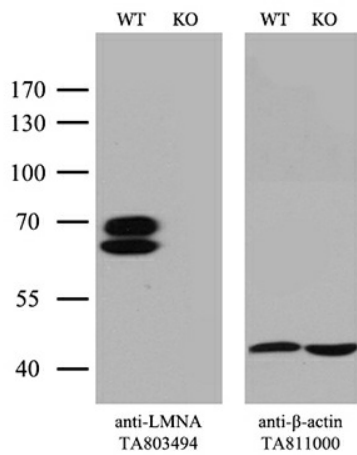
Product images:



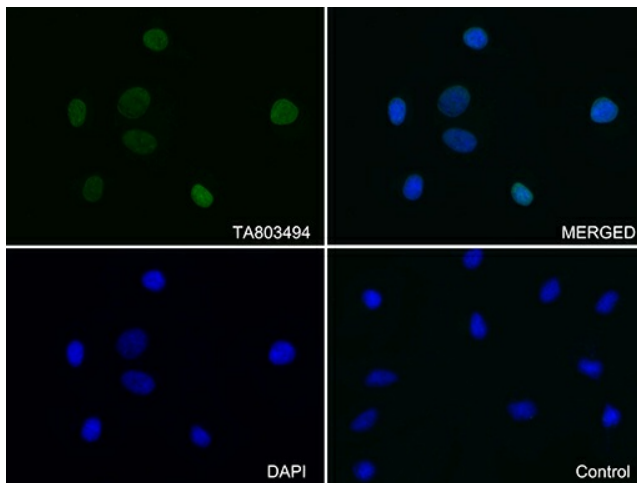
HEK293T cells were transfected with the pCMV6-ENTRY control (Left lane) or pCMV6-ENTRY LMNA ([RC204970], Right lane) cDNA for 48 hrs and lysed. Equivalent amounts of cell lysates (5 ug per lane) were separated by SDS-PAGE and immunoblotted with anti-LMNA. Positive lysates [LY406886] (100ug) and [LC406886] (20ug) can be purchased separately from OriGene.



Western blot analysis of extracts (35ug) from different cell line by using anti-LMNA monoclonal antibody (1:500).



Equivalent amounts of cell lysates (10 ug per lane) of wild-type HeLa cells (WT, Cat# LC810HELA) and LMNA-Knockout HeLa cells (KO, Cat# [LC810130]) were separated by SDS-PAGE and immunoblotted with anti-LMNA monoclonal antibody TA803494. Then the blotted membrane was stripped and reprobed with anti-b-actin antibody ([TA811000]) as a loading control (1:500).



Immunofluorescent staining of HeLa cells using anti-LMNA mouse monoclonal antibody (TA803494, green, upper left; merged, upper right) or Isotype control (merged, lower right). Cell nuclei were stained with DAPI (blue, lower left) (1:100).