

Product datasheet for **TA803488S**

RBFOX1 Mouse Monoclonal Antibody [Clone ID: OTI4F9]

Product data:

Product Type:	Primary Antibodies
Clone Name:	OTI4F9
Applications:	IHC, WB
Recommended Dilution:	WB 1:2000, IHC 1:150
Reactivity:	Human, Mouse, Rat
Host:	Mouse
Isotype:	IgG1
Clonality:	Monoclonal
Immunogen:	Human recombinant protein fragment corresponding to amino acids 1-210 of human RBFOX1 (NP_061193) produced in E.coli.
Formulation:	PBS (pH 7.3) containing 1% BSA, 50% glycerol and 0.02% sodium azide.
Concentration:	1 mg/ml
Purification:	Purified from mouse ascites fluids or tissue culture supernatant by affinity chromatography (protein A/G)
Conjugation:	Unconjugated
Storage:	Store at -20°C as received.
Stability:	Stable for 12 months from date of receipt.
Gene Name:	RNA binding protein, fox-1 homolog 1
Database Link:	NP_061193 Entrez Gene 268859 Mouse Entrez Gene 302920 Rat Entrez Gene 54715 Human Q9NWB1



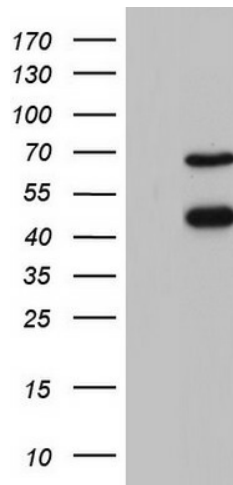
[View online »](#)

Background:

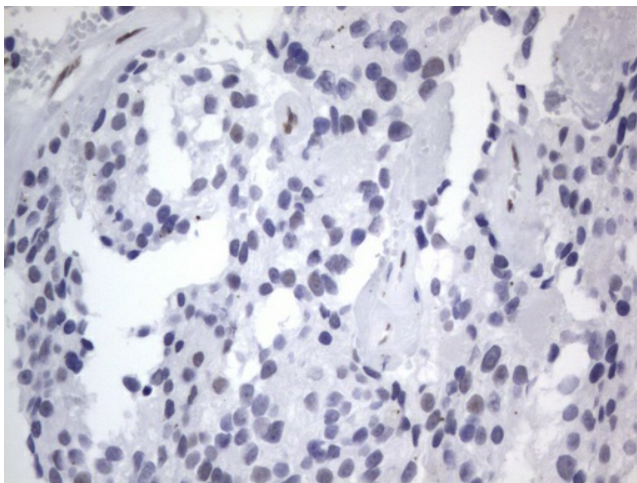
The Fox-1 family of RNA-binding proteins is evolutionarily conserved, and regulates tissue-specific alternative splicing in metazoa. Fox-1 recognizes a (U)GCAUG stretch in regulated exons or in flanking introns. The protein binds to the C-terminus of ataxin-2 and may contribute to the restricted pathology of spinocerebellar ataxia type 2 (SCA2). Ataxin-2 is the product of the SCA2 gene which causes familial neurodegenerative diseases. Fox-1 and ataxin-2 are both localized in the trans-Golgi network. Several alternatively spliced transcript variants encoding different isoforms have been found for this gene. [provided by RefSeq, Nov 2011]

Synonyms:

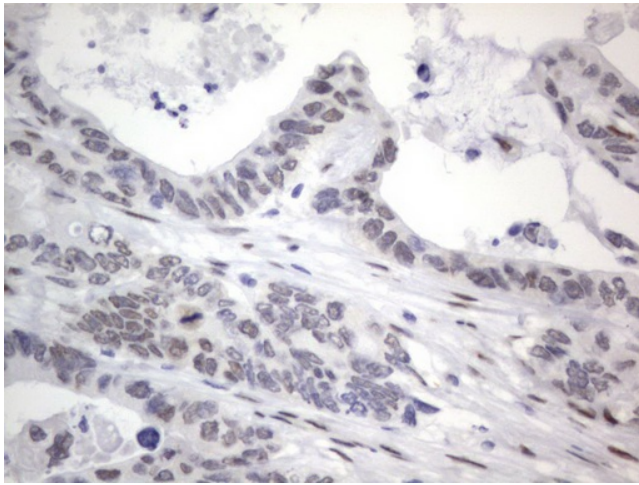
2BP1; A2BP1; FOX-1; FOX1; HRNBP1

Product images:

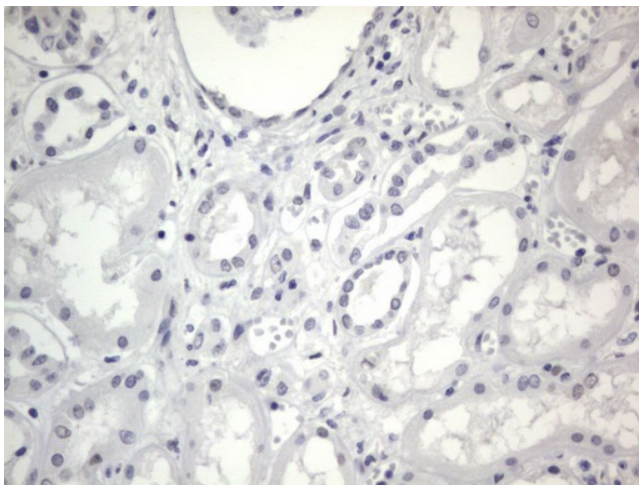
HEK293T cells were transfected with the pCMV6-ENTRY control (Cat# [PS100001], Left lane) or pCMV6-ENTRY RBFOX1 (Cat# [RC217960], Right lane) cDNA for 48 hrs and lysed. Equivalent amounts of cell lysates (5 ug per lane) were separated by SDS-PAGE and immunoblotted with anti-RBFOX1 (Cat# [TA803488]). Positive lysates [LY402712] (100ug) and [LC402712] (20ug) can be purchased separately from OriGene.



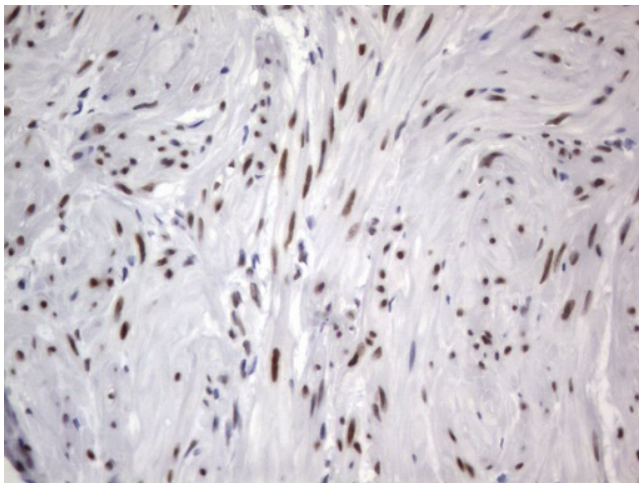
Immunohistochemical staining of paraffin-embedded Adenocarcinoma of Human breast tissue using anti-RBFOX1 mouse monoclonal antibody. (Heat-induced epitope retrieval by 1mM EDTA in 10mM Tris, pH8.5, 120°C for 3min, [TA803488])



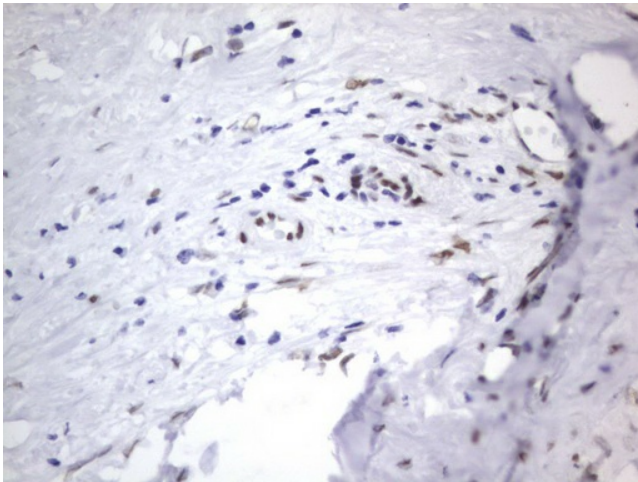
Immunohistochemical staining of paraffin-embedded Adenocarcinoma of Human colon tissue using anti-RBFOX1 mouse monoclonal antibody. (Heat-induced epitope retrieval by 1mM EDTA in 10mM Tris, pH8.5, 120°C for 3min, [TA803488])



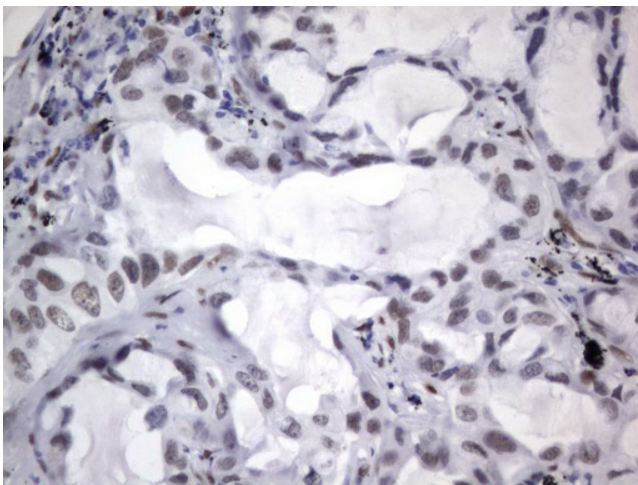
Immunohistochemical staining of paraffin-embedded Human Kidney tissue within the normal limits using anti-RBFOX1 mouse monoclonal antibody. (Heat-induced epitope retrieval by 1mM EDTA in 10mM Tris, pH8.5, 120°C for 3min, [TA803488])



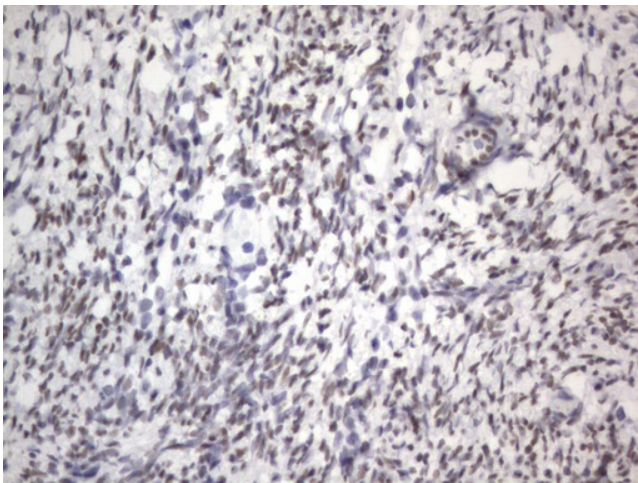
Immunohistochemical staining of paraffin-embedded Carcinoma of Human kidney tissue using anti-RBFOX1 mouse monoclonal antibody. (Heat-induced epitope retrieval by 1mM EDTA in 10mM Tris, pH8.5, 120°C for 3min, [TA803488])



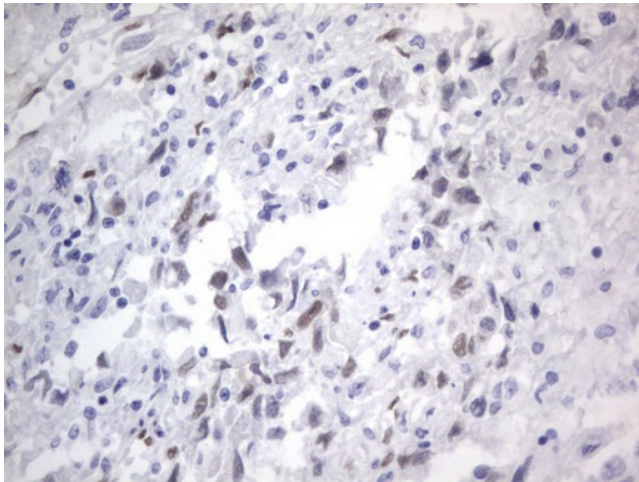
Immunohistochemical staining of paraffin-embedded Carcinoma of Human liver tissue using anti-RBFOX1 mouse monoclonal antibody. (Heat-induced epitope retrieval by 1mM EDTA in 10mM Tris, pH8.5, 120°C for 3min, [TA803488])



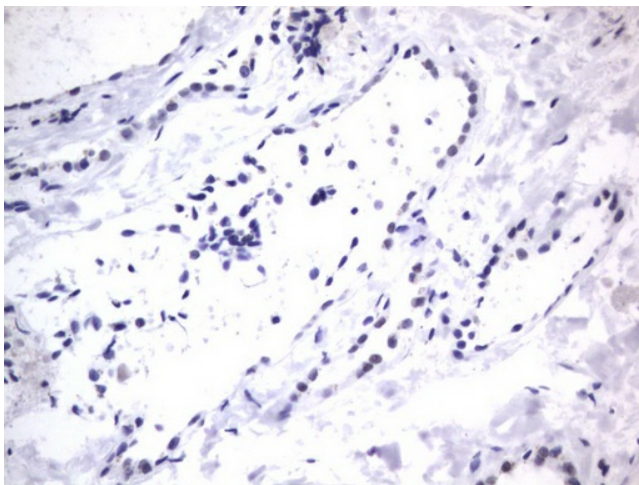
Immunohistochemical staining of paraffin-embedded Carcinoma of Human lung tissue using anti-RBFOX1 mouse monoclonal antibody. (Heat-induced epitope retrieval by 1mM EDTA in 10mM Tris, pH8.5, 120°C for 3min, [TA803488])



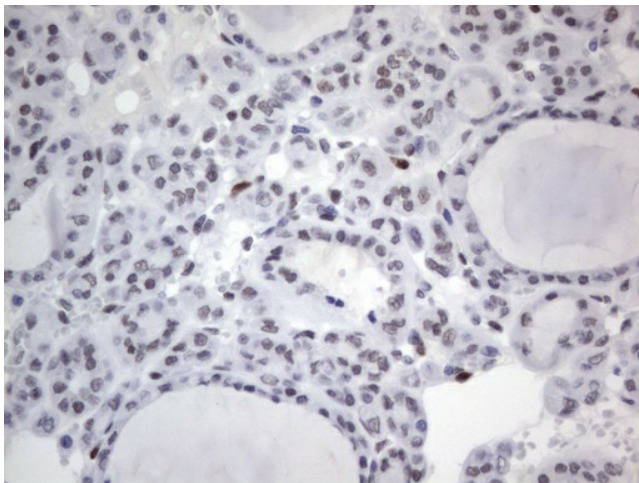
Immunohistochemical staining of paraffin-embedded Human Ovary tissue within the normal limits using anti-RBFOX1 mouse monoclonal antibody. (Heat-induced epitope retrieval by 1mM EDTA in 10mM Tris, pH8.5, 120°C for 3min, [TA803488])



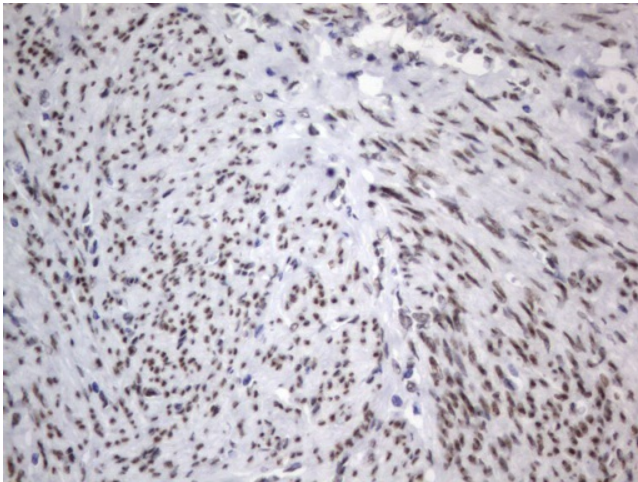
Immunohistochemical staining of paraffin-embedded Adenocarcinoma of Human ovary tissue using anti-RBFOX1 mouse monoclonal antibody. (Heat-induced epitope retrieval by 1mM EDTA in 10mM Tris, pH8.5, 120°C for 3min, [TA803488])



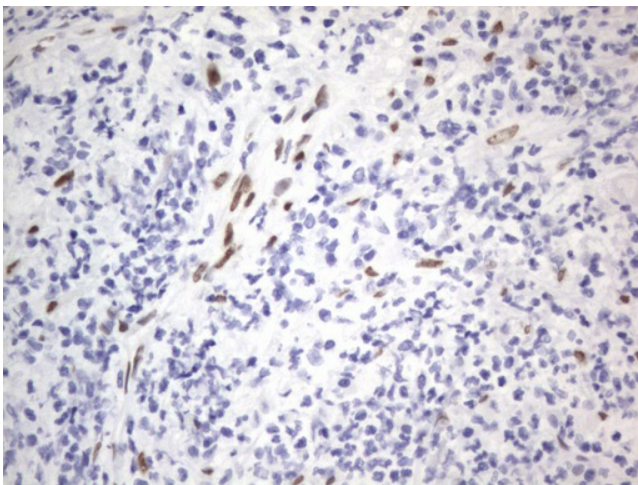
Immunohistochemical staining of paraffin-embedded Human thyroid tissue within the normal limits using anti-RBFOX1 mouse monoclonal antibody. (Heat-induced epitope retrieval by 1mM EDTA in 10mM Tris, pH8.5, 120°C for 3min, [TA803488])



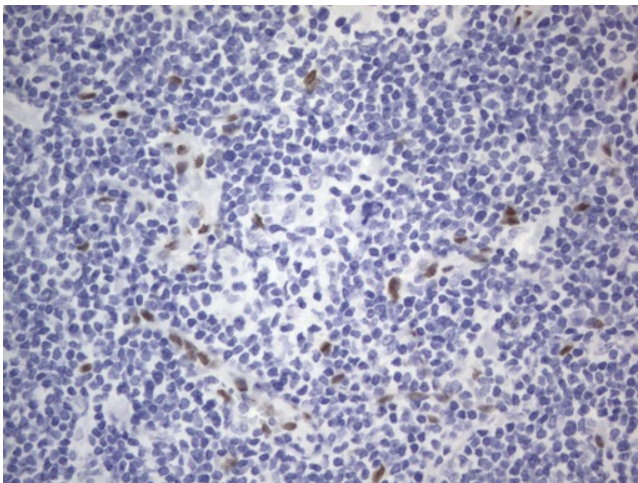
Immunohistochemical staining of paraffin-embedded Carcinoma of Human thyroid tissue using anti-RBFOX1 mouse monoclonal antibody. (Heat-induced epitope retrieval by 1mM EDTA in 10mM Tris, pH8.5, 120°C for 3min, [TA803488])



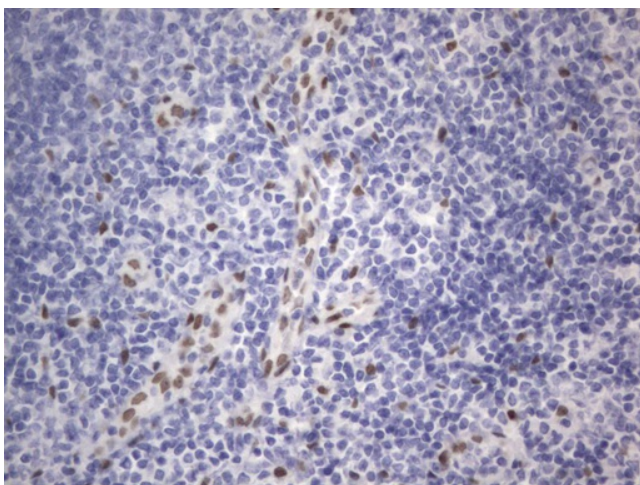
Immunohistochemical staining of paraffin-embedded Adenocarcinoma of Human endometrium tissue using anti-RBFOX1 mouse monoclonal antibody. (Heat-induced epitope retrieval by 1mM EDTA in 10mM Tris, pH8.5, 120°C for 3min, [TA803488])



Immunohistochemical staining of paraffin-embedded Human lymph node tissue within the normal limits using anti-RBFOX1 mouse monoclonal antibody. (Heat-induced epitope retrieval by 1mM EDTA in 10mM Tris, pH8.5, 120°C for 3min, [TA803488])



Immunohistochemical staining of paraffin-embedded Human lymphoma tissue using anti-RBFOX1 mouse monoclonal antibody. (Heat-induced epitope retrieval by 1mM EDTA in 10mM Tris, pH8.5, 120°C for 3min, [TA803488])



Immunohistochemical staining of paraffin-embedded Human tonsil within the normal limits using anti-RBFOX1 mouse monoclonal antibody. (Heat-induced epitope retrieval by 1mM EDTA in 10mM Tris, pH8.5, 120°C for 3min, [TA803488])