

Product datasheet for **TA803485M**

Melanoma gp100 (PMEL) Mouse Monoclonal Antibody [Clone ID: OTI3G5]

Product data:

Product Type:	Primary Antibodies
Clone Name:	OTI3G5
Applications:	WB
Recommended Dilution:	WB 1:2000
Reactivity:	Human
Host:	Mouse
Isotype:	IgG1
Clonality:	Monoclonal
Immunogen:	Full length human recombinant protein of human SILV (NP_008859) produced in HEK293T cell.
Formulation:	PBS (pH 7.3) containing 1% BSA, 50% glycerol and 0.02% sodium azide.
Concentration:	1 mg/ml
Purification:	Purified from mouse ascites fluids or tissue culture supernatant by affinity chromatography (protein A/G)
Conjugation:	Unconjugated
Storage:	Store at -20°C as received.
Stability:	Stable for 12 months from date of receipt.
Gene Name:	premelanosome protein
Database Link:	NP_008859 Entrez Gene 6490 Human P40967



[View online »](#)

Background:

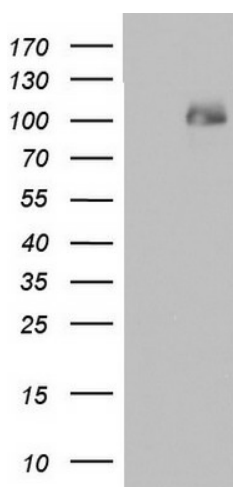
This gene encodes a melanocyte-specific type I transmembrane glycoprotein. The encoded protein is enriched in melanosomes, which are the melanin-producing organelles in melanocytes, and plays an essential role in the structural organization of premelanosomes. This protein is involved in generating internal matrix fibers that define the transition from Stage I to Stage II melanosomes. This protein undergoes a complex pattern of posttranslational processing and modification that is essential to the proper functioning of the protein. A secreted form of this protein that is released by proteolytic ectodomain shedding may be used as a melanoma-specific serum marker. Alternate splicing results in multiple transcript variants. [provided by RefSeq, Jan

Synonyms:

D12S53E; gp100; ME20; ME20-M; ME20M; P1; P100; PMEL17; SI; SIL; SILV

Protein Families:

Secreted Protein, Transmembrane

Product images:


HEK293T cells were transfected with the pCMV6-ENTRY control (Left lane) or pCMV6-ENTRY SILV ([RC200663], Right lane) cDNA for 48 hrs and lysed. Equivalent amounts of cell lysates (5 ug per lane) were separated by SDS-PAGE and immunoblotted with anti-SILV. Positive lysates [LY402062] (100ug) and [LC402062] (20ug) can be purchased separately from OriGene.