

Product datasheet for **TA803479BM**

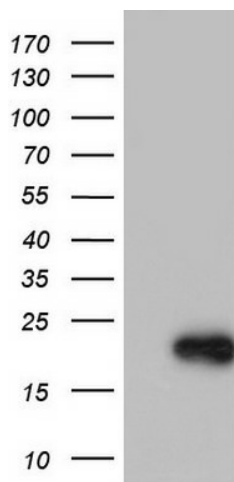
SYNC Mouse Monoclonal Antibody (HRP conjugated) [Clone ID: OTI1E7]

Product data:

Product Type:	Primary Antibodies
Clone Name:	OTI1E7
Applications:	WB
Recommended Dilution:	WB 1:2000
Reactivity:	Human
Host:	Mouse
Isotype:	IgG2a
Clonality:	Monoclonal
Immunogen:	Full length human recombinant protein of human SYNC (NP_110413) produced in SF9 cell.
Formulation:	PBS (pH 7.3) containing 1% BSA, 50% glycerol.
Concentration:	0.5 mg/ml
Purification:	Purified from mouse ascites fluids or tissue culture supernatant by affinity chromatography (protein A/G)
Conjugation:	HRP
Storage:	Store at -20°C as received.
Stability:	Stable for 12 months from date of receipt.
Gene Name:	syncoilin, intermediate filament protein
Database Link:	NP_110413 Entrez Gene 81493 Human Q9H7C4
Background:	This gene encodes a member of the intermediate filament family which contains an N-terminal head domain, followed by a central coiled-coil region and a short C-terminal tail. The protein is highly expressed in skeletal and cardiac muscle. The protein links the dystrophin associated protein complex (DAPC) to desmin filaments in muscle and may have a structural role in striated muscle. Multiple transcript variants encoding different isoforms have been found for this gene. [provided by RefSeq, Jun 2009]
Synonyms:	SYNC1; SYNCOILIN



[View online »](#)

Product images:

HEK293T cells were transfected with the pCMV6-ENTRY control (Left lane) or pCMV6-ENTRY SYNC ([RC220935], Right lane) cDNA for 48 hrs and lysed. Equivalent amounts of cell lysates (5 ug per lane) were separated by SDS-PAGE and immunoblotted with anti-SYNC. Positive lysates [LY410708] (100ug) and [LC410708] (20ug) can be purchased separately from OriGene.