

Product datasheet for **TA803478BM**

MSRB3 Mouse Monoclonal Antibody (HRP conjugated) [Clone ID: OTI2A2]

Product data:

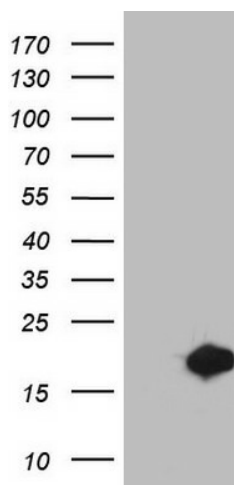
Product Type:	Primary Antibodies
Clone Name:	OTI2A2
Applications:	IHC, WB
Recommended Dilution:	WB 1:2000, IHC 1:150
Reactivity:	Human, Mouse, Rat
Host:	Mouse
Isotype:	IgG1
Clonality:	Monoclonal
Immunogen:	Human recombinant protein fragment corresponding to amino acids 33-192 of human MSRB3 (NP_932346) produced in E.coli.
Formulation:	PBS (pH 7.3) containing 1% BSA, 50% glycerol.
Concentration:	0.5 mg/ml
Purification:	Purified from mouse ascites fluids or tissue culture supernatant by affinity chromatography (protein A/G)
Conjugation:	HRP
Storage:	Store at -20°C as received.
Stability:	Stable for 12 months from date of receipt.
Predicted Protein Size:	20.5 kDa
Gene Name:	methionine sulfoxide reductase B3
Database Link:	NP_932346 Entrez Gene 253827 Human Q8IXL7
Background:	The protein encoded by this gene catalyzes the reduction of methionine sulfoxide to methionine. This enzyme acts as a monomer and requires zinc as a cofactor. Several transcript variants encoding two different isoforms have been found for this gene. One of the isoforms localizes to mitochondria while the other localizes to endoplasmic reticula. [provided by RefSeq, Jul 2010]



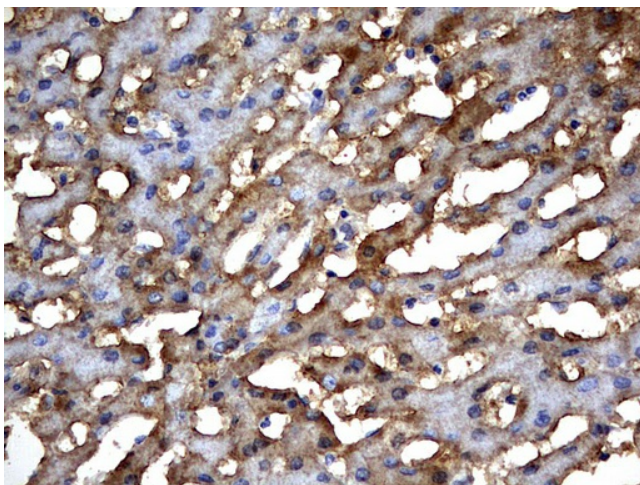
[View online »](#)

Synonyms: DFNB74

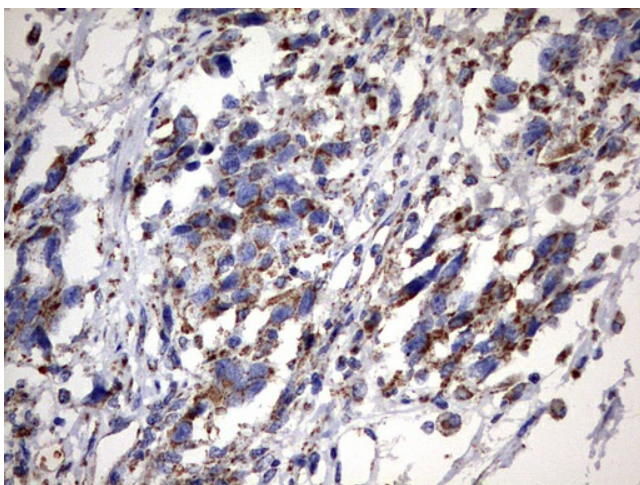
Product images:



HEK293T cells were transfected with the pCMV6-ENTRY control (Cat# [PS100001], Left lane) or pCMV6-ENTRY MSRB3 (Cat# [RC216512], Right lane) cDNA for 48 hrs and lysed. Equivalent amounts of cell lysates (5 ug per lane) were separated by SDS-PAGE and immunoblotted with anti-MSRB3 (Cat# [TA803478]). Positive lysates [LY403694] (100ug) and [LC403694] (20ug) can be purchased separately from OriGene.



Immunohistochemical staining of paraffin-embedded Human liver tissue within the normal limits using anti-MSRB3 mouse monoclonal antibody. (Heat-induced epitope retrieval by 10mM citric buffer, pH6.0, 120°C for 3min, [TA803478])



Immunohistochemical staining of paraffin-embedded Adenocarcinoma of Human ovary tissue using anti-MSRB3 mouse monoclonal antibody. (Heat-induced epitope retrieval by 10mM citric buffer, pH6.0, 120°C for 3min, [TA803478])