

Product datasheet for **TA803469M**

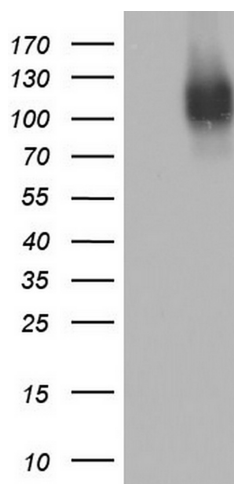
CD146 (MCAM) Mouse Monoclonal Antibody [Clone ID: OTI1F10]

Product data:

Product Type:	Primary Antibodies
Clone Name:	OTI1F10
Applications:	WB
Recommended Dilution:	WB 1:2000
Reactivity:	Human
Host:	Mouse
Isotype:	IgG1
Clonality:	Monoclonal
Immunogen:	Full length human recombinant protein of human MCAM (NP_006491) produced in HEK293T cell.
Formulation:	PBS (pH 7.3) containing 1% BSA, 50% glycerol and 0.02% sodium azide.
Concentration:	1 mg/ml
Purification:	Purified from mouse ascites fluids or tissue culture supernatant by affinity chromatography (protein A/G)
Conjugation:	Unconjugated
Storage:	Store at -20°C as received.
Stability:	Stable for 12 months from date of receipt.
Predicted Protein Size:	71.4 kDa
Gene Name:	melanoma cell adhesion molecule
Database Link:	NP_006491 Entrez Gene 4162 Human P43121
Synonyms:	CD146; MUC18
Protein Families:	Druggable Genome, ES Cell Differentiation/IPS, Transmembrane



[View online »](#)

Product images:


HEK293T cells were transfected with the pCMV6-ENTRY control (Left lane) or pCMV6-ENTRY MCAM ([RC208937], Right lane) cDNA for 48 hrs and lysed. Equivalent amounts of cell lysates (5 ug per lane) were separated by SDS-PAGE and immunoblotted with anti-MCAM. Positive lysates [LY416601] (100ug) and [LC416601] (20ug) can be purchased separately from OriGene.