

## Product datasheet for **TA803468**

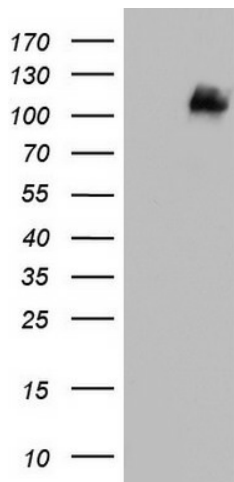
### CD146 (MCAM) Mouse Monoclonal Antibody [Clone ID: OTI2B2]

#### Product data:

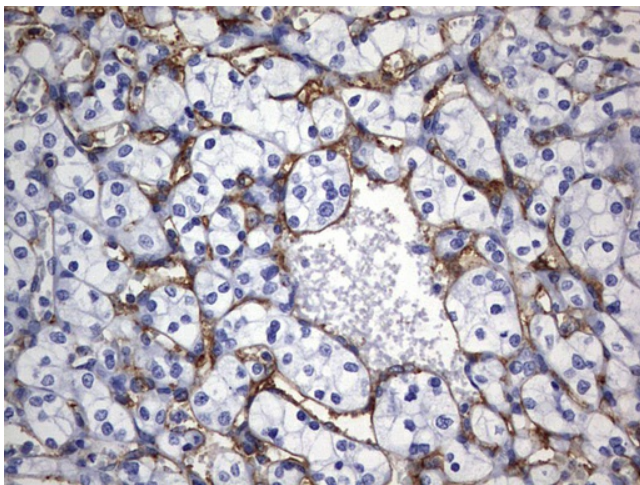
|                       |   |
|-----------------------|---|
| Product Type:         | Primary Antibodies  |
| Clone Name:           | OTI2B2  |
| Applications:         | IHC, WB   |
| Recommended Dilution: | WB 1:2000, IHC 1:150  |
| Reactivity:           | Human   |
| Host:                 | Mouse   |
| Isotype:              | IgG1  |
| Clonality:            | Monoclonal  |
| Immunogen:            | Full length human recombinant protein of human MCAM (NP_006491) produced in HEK293T cell.                 |
| Formulation:          | PBS (PH 7.3) containing 1% BSA, 50% glycerol and 0.02% sodium azide.                                      |
| Concentration:        | 1 mg/ml   |
| Purification:         | Purified from mouse ascites fluids or tissue culture supernatant by affinity chromatography (protein A/G) |
| Storage:              | Store at -20°C as received.   |
| Stability:            | Stable for 12 months from date of receipt.  |
| Gene Name:            | melanoma cell adhesion molecule   |
| Database Link:        | <a href="#">NP_006491 Entrez Gene 4162 Human</a>  |
| Synonyms:             | CD146; MUC18  |
| Protein Families:     | Druggable Genome, ES Cell Differentiation/IPS, Transmembrane  |



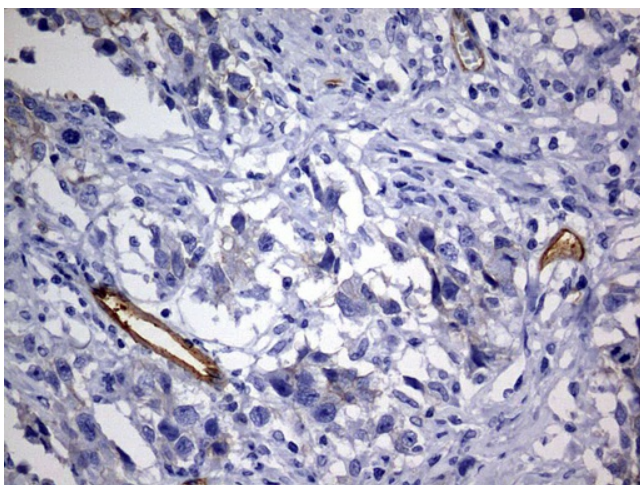
[View online »](#)

**Product images:**

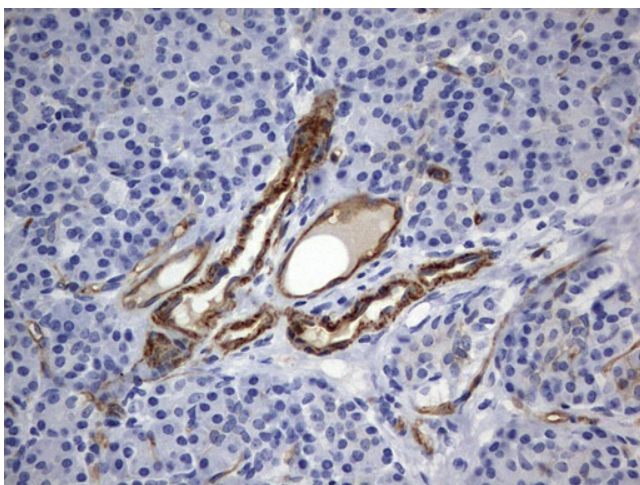
HEK293T cells were transfected with the pCMV6-ENTRY control (Left lane) or pCMV6-ENTRY MCAM ([RC208937], Right lane) cDNA for 48 hrs and lysed. Equivalent amounts of cell lysates (5 ug per lane) were separated by SDS-PAGE and immunoblotted with anti-MCAM. Positive lysates [LY416601] (100ug) and [LC416601] (20ug) can be purchased separately from OriGene.



Immunohistochemical staining of paraffin-embedded Carcinoma of Human kidney tissue using anti-MCAM mouse monoclonal antibody. (Heat-induced epitope retrieval by 1 mM EDTA in 10mM Tris, pH8.5, 120°C for 3min, TA803468)



Immunohistochemical staining of paraffin-embedded Adenocarcinoma of Human ovary tissue using anti-MCAM mouse monoclonal antibody. (Heat-induced epitope retrieval by 1 mM EDTA in 10mM Tris, pH8.5, 120°C for 3min, TA803468)



Immunohistochemical staining of paraffin-embedded Human pancreas tissue within the normal limits using anti-MCAM mouse monoclonal antibody. (Heat-induced epitope retrieval by 1 mM EDTA in 10mM Tris, pH8.5, 120°C for 3min, TA803468)