

Product datasheet for **TA803466M**

ASC2 (PYDC1) Mouse Monoclonal Antibody [Clone ID: OTI9C10]

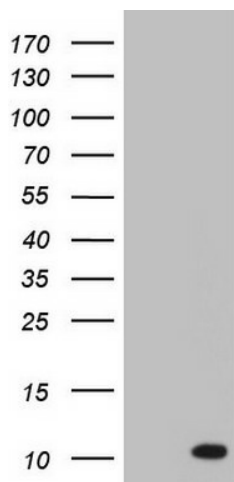
Product data:

Product Type:	Primary Antibodies
Clone Name:	OTI9C10
Applications:	IHC, WB
Recommended Dilution:	WB 1:2000, IHC 1:150
Reactivity:	Human
Host:	Mouse
Isotype:	IgG1
Clonality:	Monoclonal
Immunogen:	Full length human recombinant protein of human PYDC1 (NP_690865) produced in E.coli.
Formulation:	PBS (pH 7.3) containing 1% BSA, 50% glycerol and 0.02% sodium azide.
Concentration:	1 mg/ml
Purification:	Purified from mouse ascites fluids or tissue culture supernatant by affinity chromatography (protein A/G)
Conjugation:	Unconjugated
Storage:	Store at -20°C as received.
Stability:	Stable for 12 months from date of receipt.
Gene Name:	pyrin domain containing 1
Database Link:	NP_690865 Entrez Gene 260434 Human Q8WXC3
Synonyms:	ASC2; cPOP1; POP1; PYC1
Protein Pathways:	NOD-like receptor signaling pathway

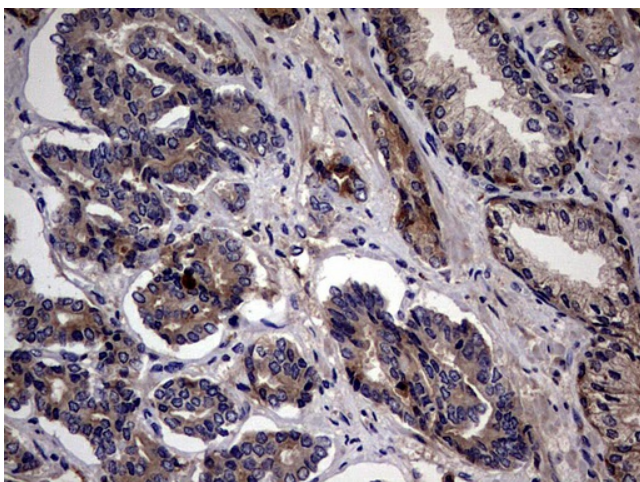


[View online »](#)

Product images:



HEK293T cells were transfected with the pCMV6-ENTRY control (Cat# [PS100001], Left lane) or pCMV6-ENTRY PYDC1 (Cat# [RC211240], Right lane) cDNA for 48 hrs and lysed. Equivalent amounts of cell lysates (5 ug per lane) were separated by SDS-PAGE and immunoblotted with anti-PYDC1 (Cat# [TA803466]). Positive lysates [LY407263] (100ug) and [LC407263] (20ug) can be purchased separately from OriGene.



Immunohistochemical staining of paraffin-embedded Human prostate tissue within the normal limits using anti-PYDC1 mouse monoclonal antibody. Heat-induced epitope retrieval by EDTA solution buffer pH 8.0 at 120°C for 3 min.